



D & D PRODUCTION INC.®

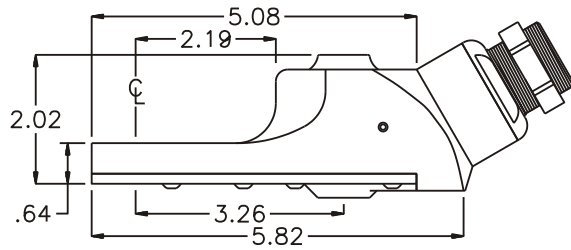
ASSEMBLY NO. CFLL304 HEAD NO. 119

FOR ATLAS COPCO LTV28XR40-10 MOTOR

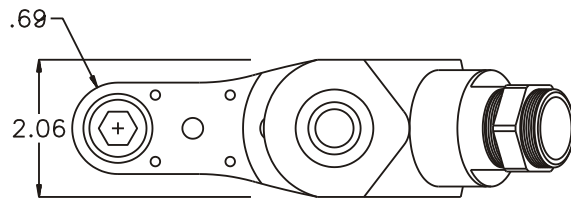
CROWFOOT ASS'Y
Rev. A
12-17-02

2500 WILLIAMS DRIVE • WATERFORD, MI • 48328 PHONE : (248) 334-2112 • FAX : (248) 334-0062

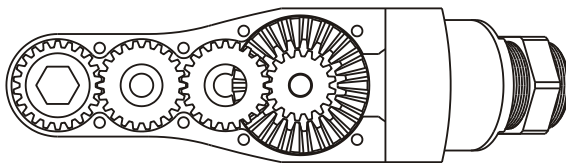
SIDE VIEW



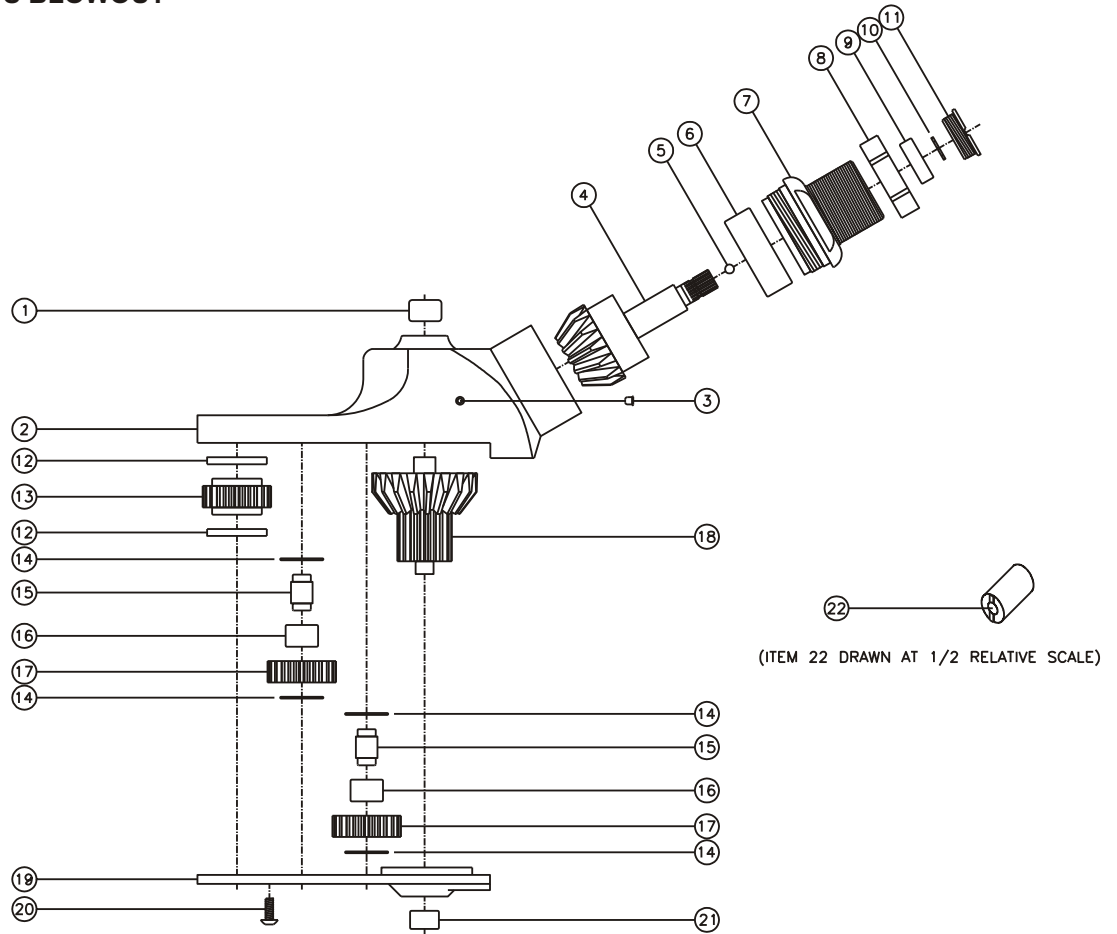
TOP VIEW



GEAR ASSEMBLY



PARTS BLOWOUT



ITEM	DESCRIPTION	PART NO.	ITEM	DESCRIPTION	PART NO.	ITEM	DESCRIPTION	PART NO.
1	Needle Bearing	M-661	11	End Nut	EN-0976B	21	Needle Bearing	M-551
2	Gear Housing	CFLL304H	12	Bushing (2)	A-4375i-M1	22	End Nut Socket (Optional)	ENT-10
3	Grease Fitting	1877	13	Socket Gear	202220i-XX			
4	Bevel Pinion Gear	301-P-10B	14	Thrust Race (4)	TRA-512i			
5	Ball Bearing	LB-4M	15	Idler Pin (2)	IP-6620Bi			
6	Needle Bearing	B-208	16	Needle Bearing (2)	B-66i			
7	Motor Coupling	MC-3028X	17	Idler Gear (2)	202212Bi			
8	Motor Nut	N-30M1LH11	18	Bevel/Drive Gear Assembly	201765-30G1			
9	Ball Bearing	699Zi	19	Bottom Plate	CFLL304P			
10	Snap Ring	51111	20	Screw (8)	S-806B			