



D & D PRODUCTION INC.®

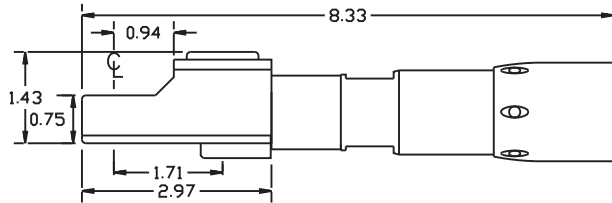
ASSEMBLY NO. CF68 HEAD NO. 129 For ETV ST61-40-10 Motor

CROWFOOT ASS'Y
Rev.A
12-16-10

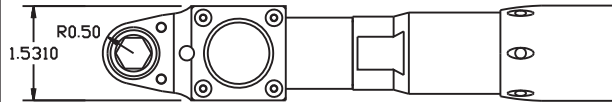
2500 WILLIAMS DRIVE • WATERFORD, MI • 48328

PHONE : (248) 334-2112 • FAX : (248) 334-0062

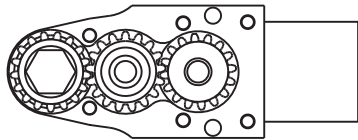
SIDE VIEW



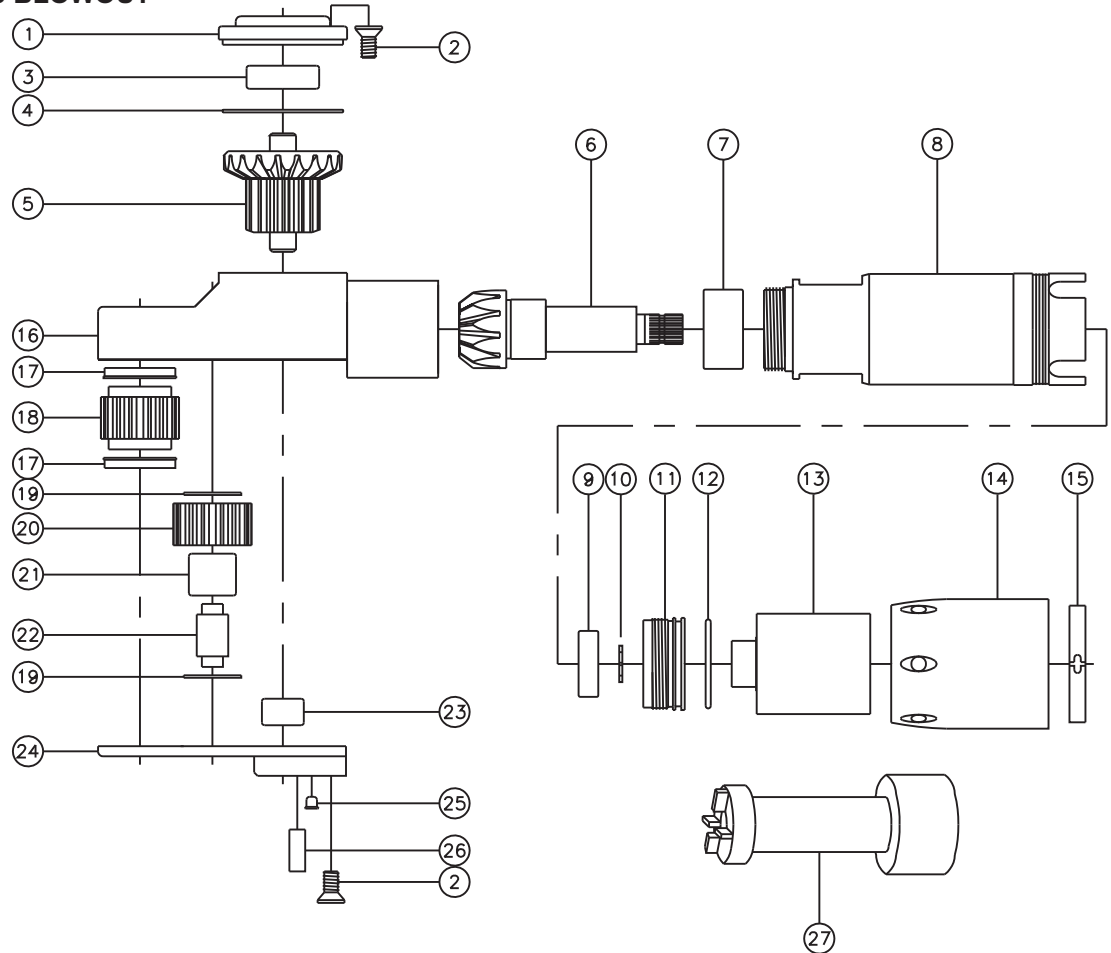
TOP VIEW



GEAR ASSEMBLY



PARTS BLOWOUT



ITEM	DESCRIPTION	PART NO.	ITEM	DESCRIPTION	PART NO.	ITEM	DESCRIPTION	PART NO.
1	Cap	BC-661G1B	11	End Nut	EN-ST614010-B	21	Needle Bearing #2	B-68
2	Screw (10)	S-806	12	O-Ring	O-6004V	22	Idler Pin	IP-6824B
3	Ball Bearing #1	38KD	13	Planetary Gear Assembly	Customer Supplied	23	Needle Bearing #3	M-551
4	Thrust Race	TRA-1423	14	Motor Nut	N-ST614010-B	24	Bottom Plate	CF68P
5	Bevel/Drive Gear Assembly	201645BG1	15	Lock Ring	Customer Supplied	25	Grease Fitting	1877
6	Bevel Pinion Gear	661P-10	16	Gear Housing (Top)	CF68H	26	Dowel Pin (2)	DP-1208
7	Needle Bearing #1	HK-1812	17	Bushing (2)	A-4808	27	End Nut Tool	ENT-ST614010-B
8	Motor Coupling	MC-ST614010-B	18	Socket Gear	201724-XX			
9	Ball Bearing #2	699Z	19	Thrust Race #2 (2)	TRA-411			
10	Snap Ring	51111	20	Idler Gear	201716			