



D & D PRODUCTION INC.®

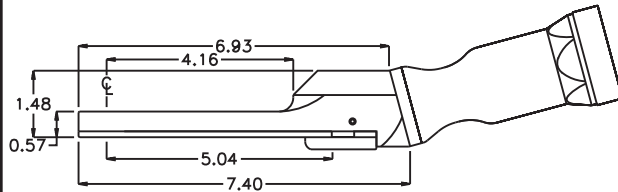
ASSEMBLY NO. CF156L HEAD NO. 107C

CROWFOOT ASS'Y
Rev. A
08-15-07

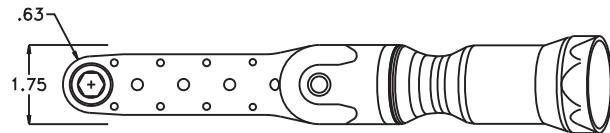
2500 WILLIAMS DRIVE • WATERFORD, MI • 48328

PHONE : (248) 334-2112 • FAX : (248) 334-0062

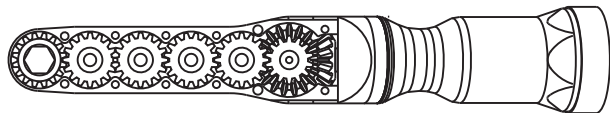
SIDE VIEW



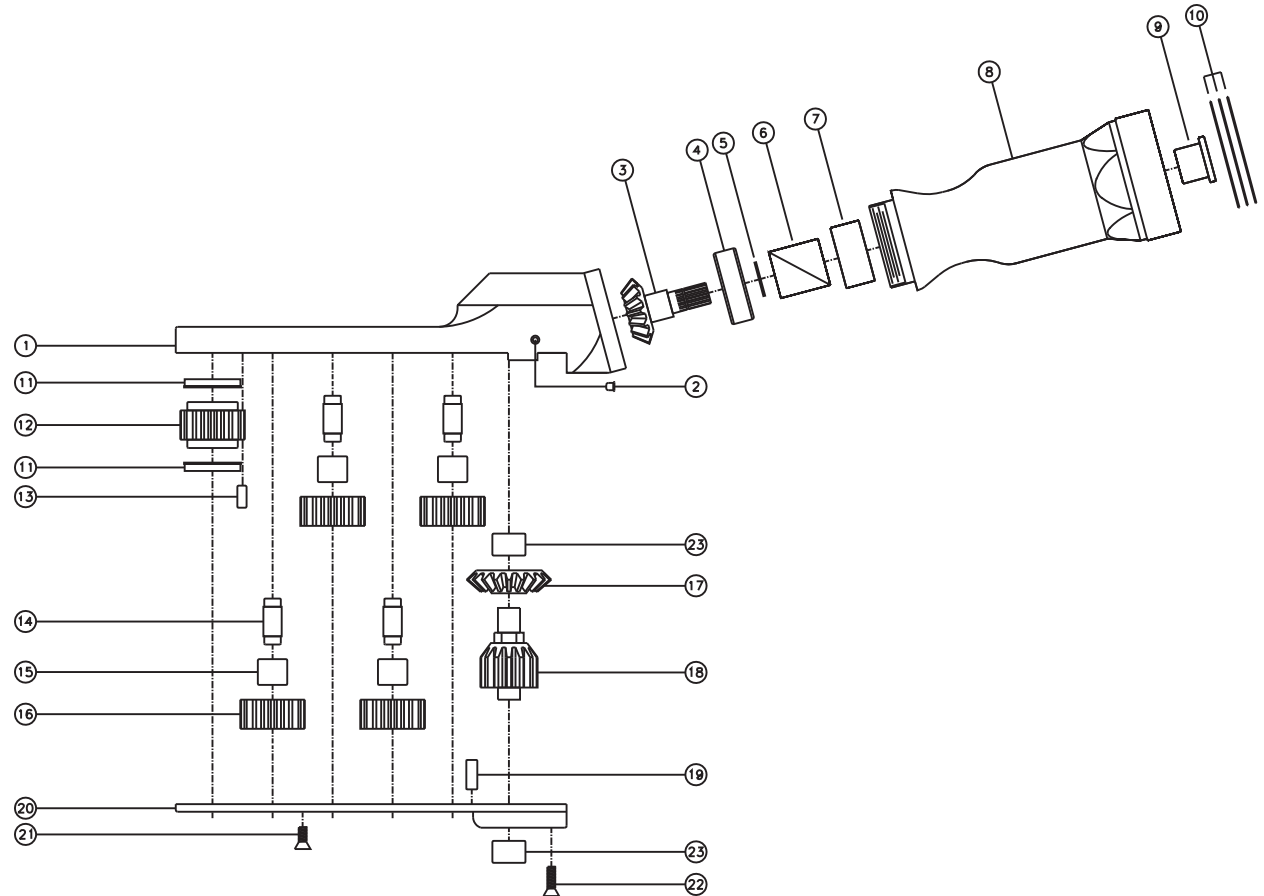
TOP VIEW



GEAR ASSEMBLY



PARTS BLOWOUT



| ITEM | DESCRIPTION | PART NO. | ITEM | DESCRIPTION | PART NO. | ITEM | DESCRIPTION | PART NO. |
|------|----------------------|-------------------|------|--------------------|-------------|------|--------------------|----------|
| 1 | Gear Housing | CF156L-H2 | 11 | Bushing (2) | A-5508 | 21 | Screw#1 (6) | S-806 |
| 2 | Grease Fitting | 1877 | 12 | Socket Gear | 161618S2-XX | 22 | Screw #2 (2) | S-810 |
| 3 | Bevel Pinion Gear | 151-P | 13 | Dowel Pin #1 (2) | DP-1004 | 23 | Needle Bearing (2) | M-661 |
| 4 | Ball Bearing | 201KD | 14 | Idler Pin (4) | IP-5518B | 24 | | |
| 5 | Snap Ring | SH-37 | 15 | Needle Bearing (4) | B-55i | 25 | | |
| 6 | Drive Shaft | DS-S062628 | 16 | Idler Gear (4) | 161610S2 | 26 | | |
| 7 | Needle Bearing | B-138 | 17 | Bevel Gear | 151-G | 27 | | |
| 8 | Motor Coupling | MC15-ECS-70 | 18 | Drive Gear | 161422-DG | 28 | | |
| 9 | Bushing | Customer Supplied | 19 | Dowel Pin #2 (2) | DP-1206 | 29 | | |
| 10 | Orientation Shim Set | W-ECS70 | 20 | Bottom Plate | CF156L-P | 30 | | |