

D & D PRODUCTION INC. ®

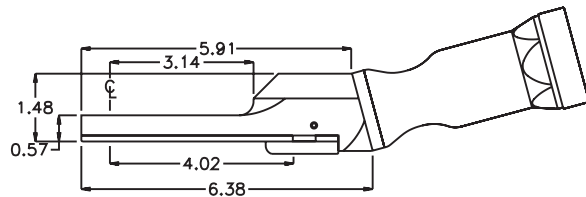
ASSEMBLY NO. CF155L HEAD NO. 102E

CROWFOOT ASS'Y
Rev. A
10-31-06

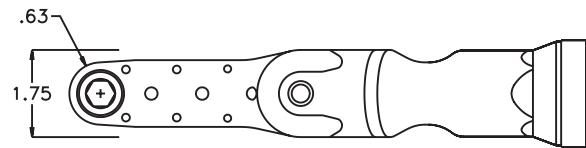
2500 WILLIAMS DRIVE • WATERFORD, MI • 48328

PHONE : (248) 334-2112 • FAX : (248) 334-0062

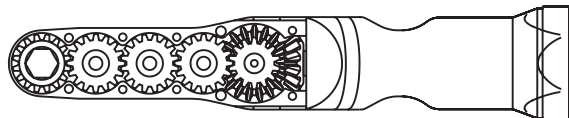
SIDE VIEW



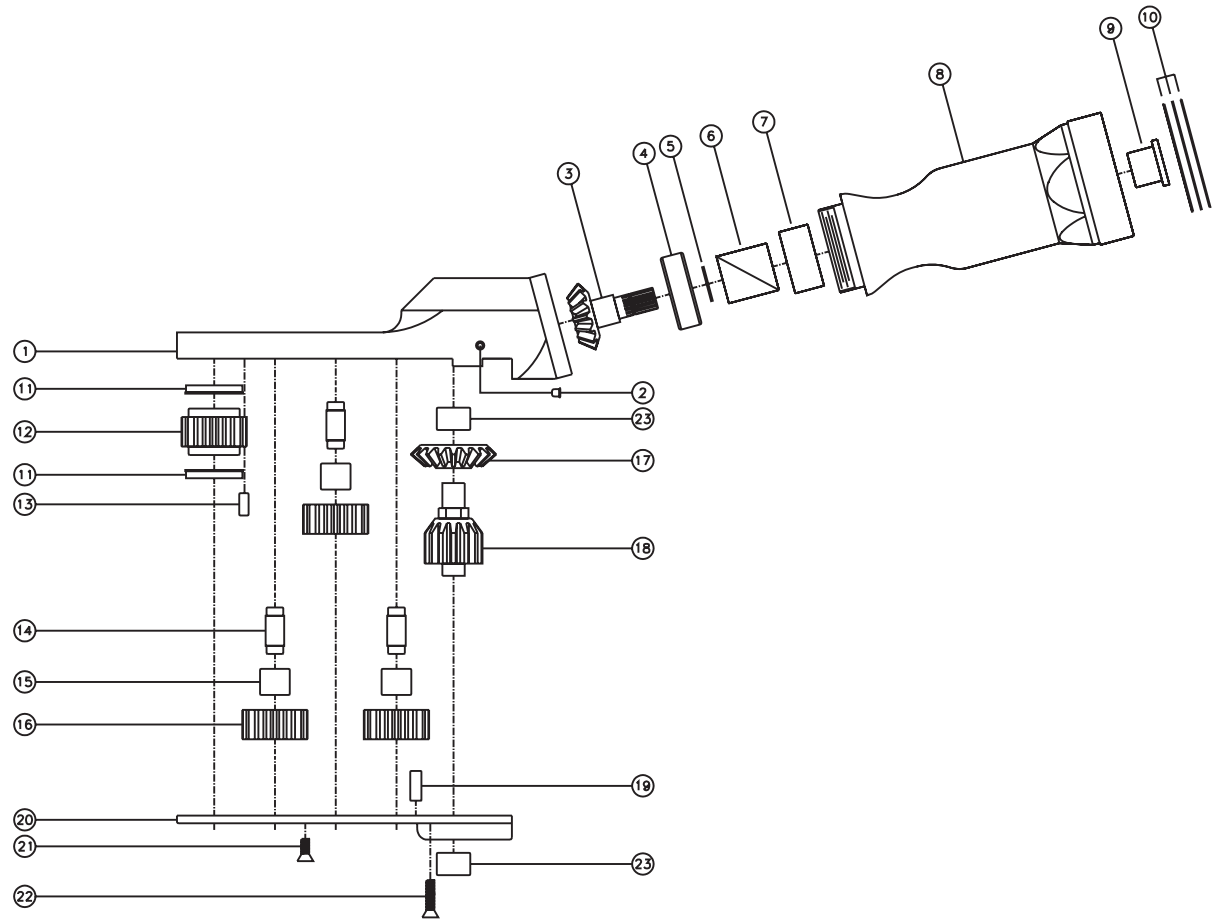
TOP VIEW



GEAR ASSEMBLY



PARTS BLOWOUT



ITEM	DESCRIPTION	PART NO.	ITEM	DESCRIPTION	PART NO.	ITEM	DESCRIPTION	PART NO.
1	Gear Housing	CF155L-H2	11	Bushing (2)	A-5508	21	Screw#1 (4)	S-806
2	Grease Fitting	1877	12	Socket Gear	161618S2-XX	22	Screw #2 (2)	S-810
3	Bevel Pinion Gear	151-P	13	Dowel Pin #1 (2)	DP-1004	23	Needle Bearing (2)	M-661
4	Ball Bearing	201KD	14	Idler Pin (3)	IP-5518B	24		
5	Snap Ring	SH-37	15	Needle Bearing (3)	B-55i	25		
6	Drive Shaft	DS-S062628	16	Idler Gear (3)	161610S2	26		
7	Needle Bearing	B-138	17	Bevel Gear	151-G	27		
8	Motor Coupling	MC15-ECS-70	18	Drive Gear	161422-DG	28		
9	Bushing	Customer Supplied	19	Dowel Pin #2 (2)	DP-1206	29		
10	Orientation Shim Set	W-ECS70	20	Bottom Plate	CF155L-P	30		