

D & D PRODUCTION INC. ®

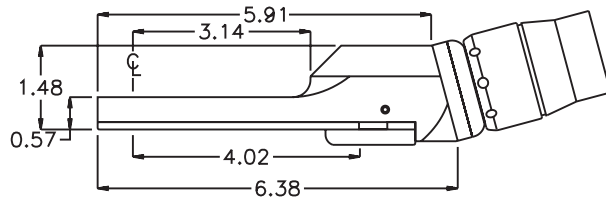
ASSEMBLY NO. CF155L HEAD NO. 102D

CROWFOOT ASS'Y
Rev. A
10-31-06

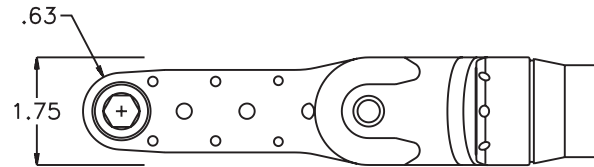
2500 WILLIAMS DRIVE • WATERFORD, MI • 48328

PHONE : (248) 334-2112 • FAX : (248) 334-0062

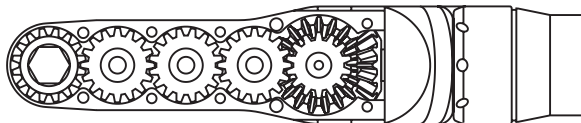
SIDE VIEW



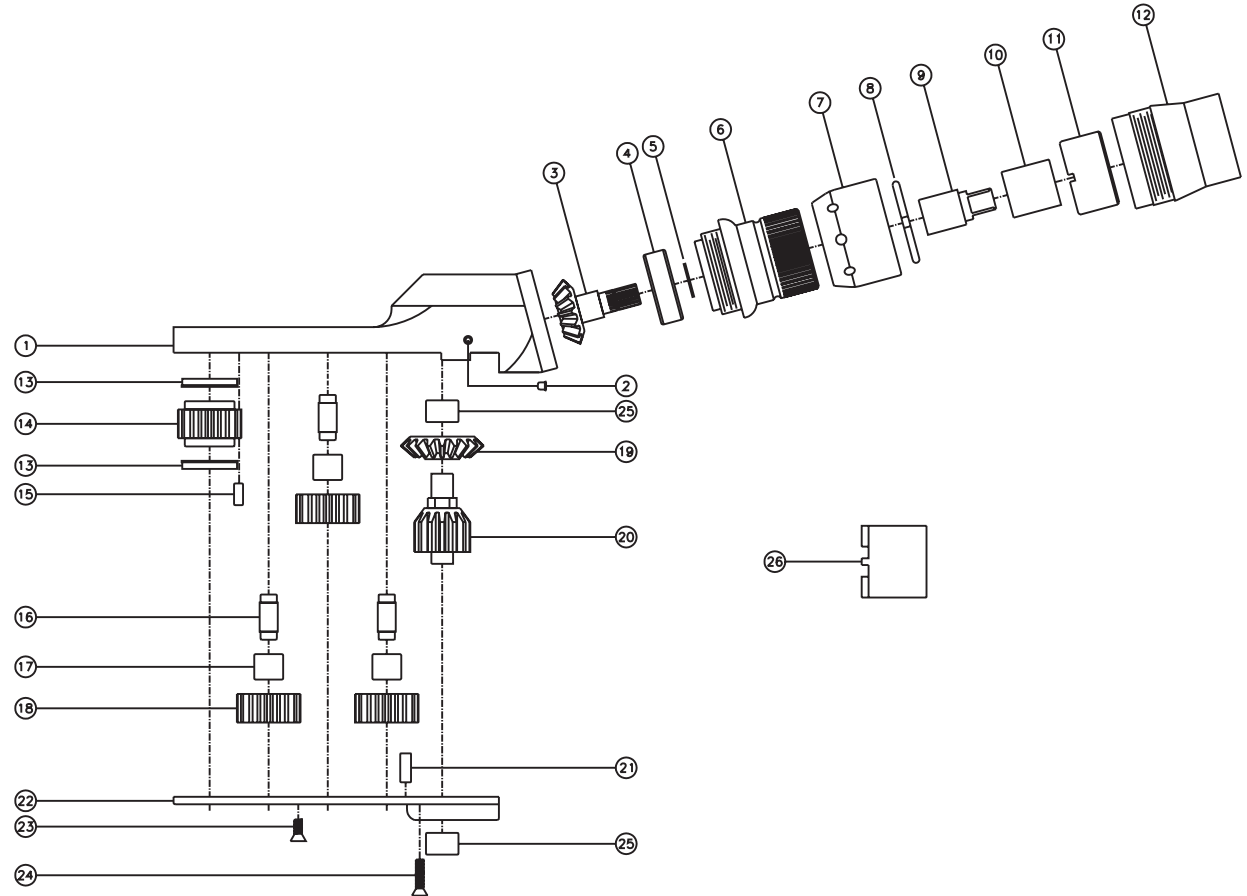
TOP VIEW



GEAR ASSEMBLY



PARTS BLOWOUT



ITEM	DESCRIPTION	PART NO.	ITEM	DESCRIPTION	PART NO.	ITEM	DESCRIPTION	PART NO.
1	Gear Housing	CF155L-H2	11	Locknut	LN-2123-GR	21	Dowel Pin #2 (2)	DP-1206
2	Grease Fitting	1877	12	Motor Coupling	MC15-48D3-C	22	Bottom Plate	CF155L-P
3	Bevel Pinion Gear	151-P	13	Bushing (2)	A-5508	23	Screw #1 (4)	S-806
4	Ball Bearing	201KD	14	Socket Gear	161618S2-XX	24	Screw #2 (2)	S-810
5	Snap Ring	SH-37	15	Dowel Pin #1 (2)	DP-1004	25	Needle Bearing (2)	M-661
6	Assembly Coupling	MC15-48D3-B2	16	Idler Pin (3)	IP-5518B	26	Locknut Socket (Optional)	ENT-48D3
7	Nut	N-D48-B	17	Needle Bearing (3)	B-551	27		
8	Circlip	D48-C	18	Idler Gear (3)	161610S2	28		
9	Driver	DS-061940	19	Bevel Gear	151-G	29		
10	Drive Shaft	DS-062627	20	Drive Gear	161422-DG	30		