



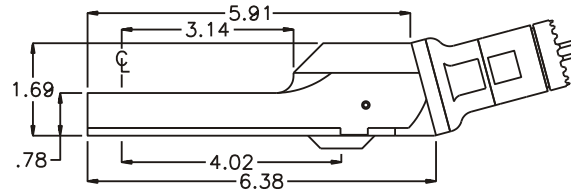
D & D PRODUCTION INC.

ASSEMBLY NO. CF155 HEAD NO. 102C FOR CLECO 34RAA37AX3 MOTOR

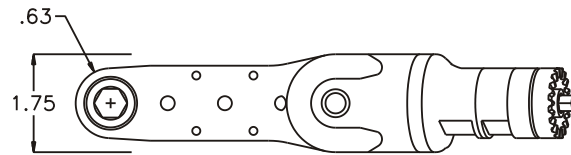
CROWFOOT ASS'Y
Rev. A
10-09-01

2500 WILLIAMS DRIVE • WATERFORD, MI • 48328 PHONE : (248) 334-2112 • FAX : (248) 334-0062

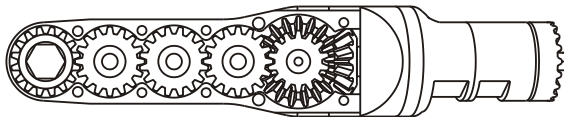
SIDE VIEW



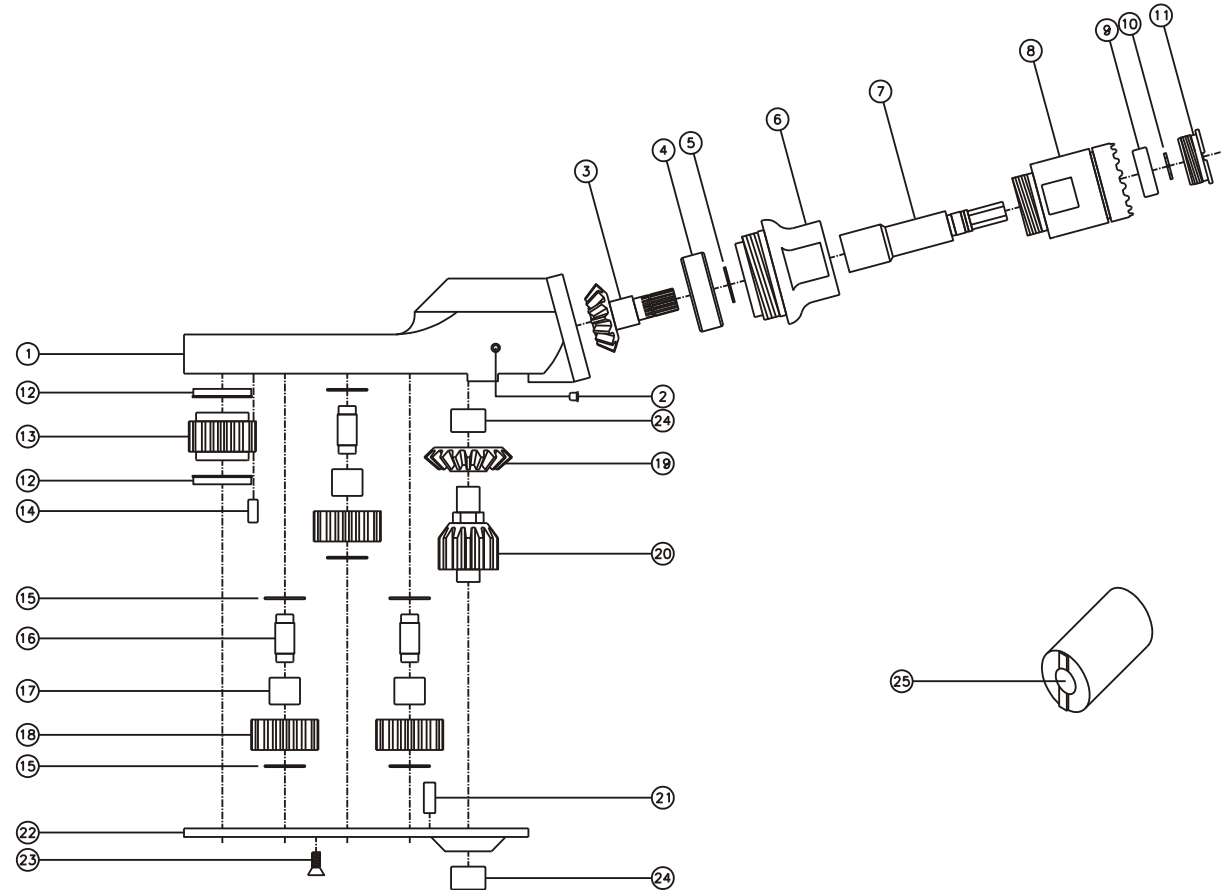
TOP VIEW



GEAR ASSEMBLY



PARTS BLOWOUT



ITEM	DESCRIPTION	PART NO.	ITEM	DESCRIPTION	PART NO.	ITEM	DESCRIPTION	PART NO.
1	Gear Housing	CF155-H2	11	End Nut	EN-0976	21	Dowel Pin #2 (2)	DP-1208
2	Grease Fitting	1877	12	Bushing (2)	A-5509	22	Bottom Plate	CF155-P
3	Bevel Pinion Gear	151-P	13	Socket Gear	161625S-XX	23	Screw (6)	S-806
4	Ball Bearing	201KD	14	Dowel Pin #1 (2)	DP-1006	24	Bearing (2)	M-661
5	Snap Ring	SH-37	15	Thrust Race (6)	TRA-512M1	25	End Nut Socket (Optional)	ENT-10
6	Attachment Coupling	MC15-A2	16	Idler Pin (3)	IP-5725B			
7	Drive Shaft	DS-S2087	17	Needle Bearing (3)	B-571			
8	Motor Coupling	MC15-AX3	18	Idler Gear (3)	161616S2			
9	Ball Bearing	699Zi	19	Bevel Gear	151-G			
10	Snap Ring	51111	20	Drive Gear	161425-DG			