



D & D PRODUCTION INC.

ASSEMBLY NO. CF155

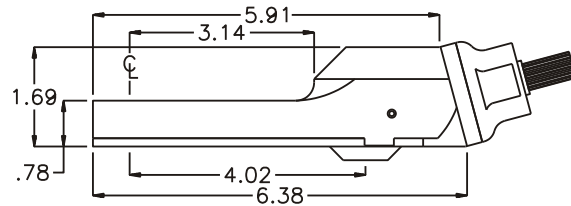
HEAD NO. 102AD

FOR ACRADYNE AEM2068 MOTOR

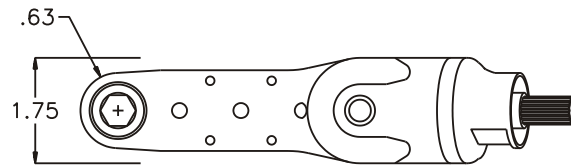
CROWFOOT ASS'Y
Rev. A
03-01-02

2500 WILLIAMS DRIVE • WATERFORD, MI • 48328 PHONE : (248) 334-2112 • FAX : (248) 334-0062

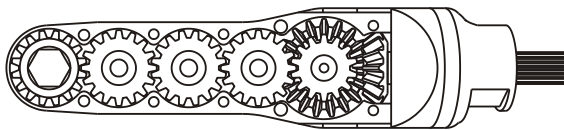
SIDE VIEW



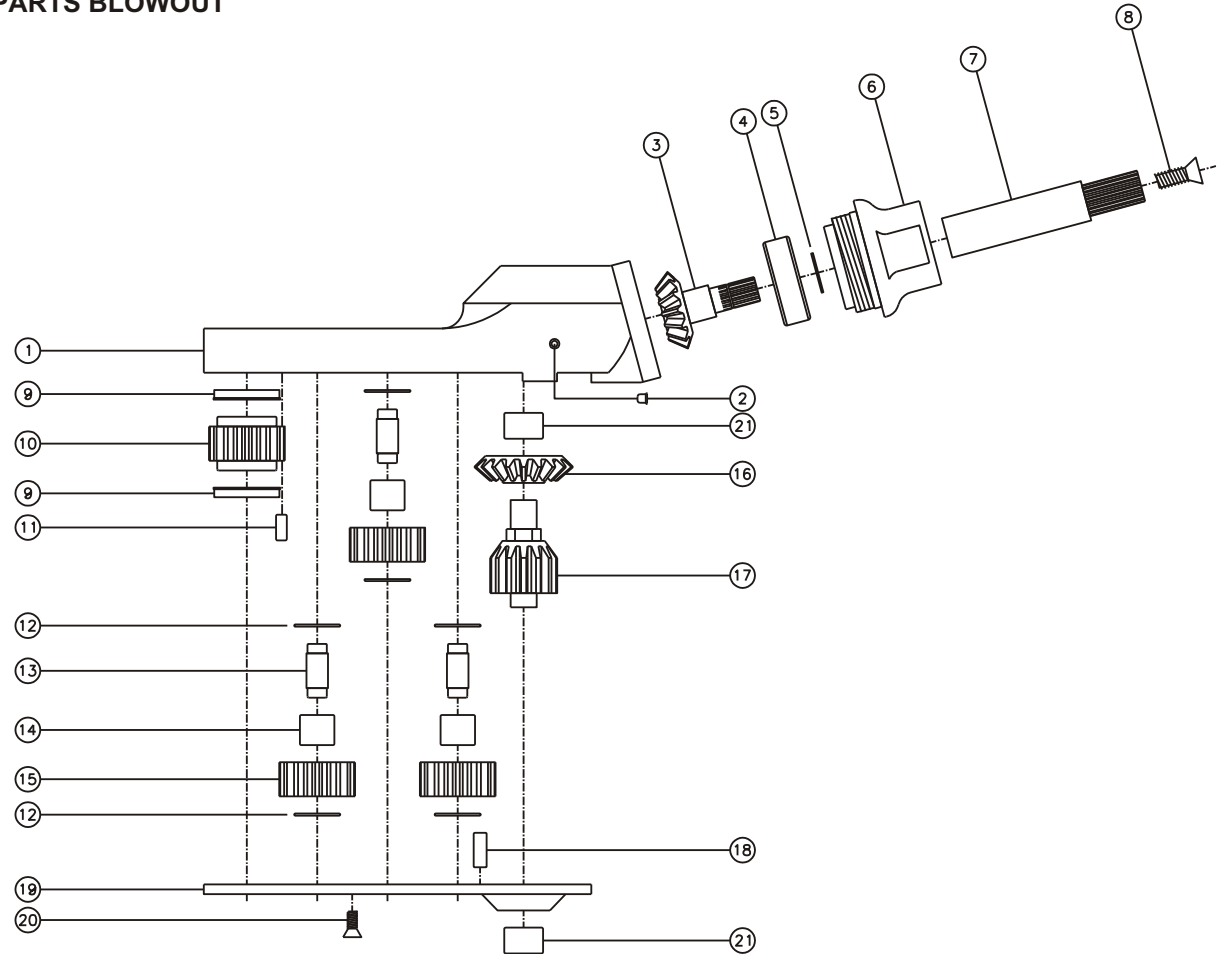
TOP VIEW



GEAR ASSEMBLY



PARTS BLOWOUT



ITEM	DESCRIPTION	PART NO.	ITEM	DESCRIPTION	PART NO.	ITEM	DESCRIPTION	PART NO.
1	Gear Housing	CF155-H2	11	Dowel Pin #1 (2)	DP-1006	21	Bearing (2)	M-661
2	Grease Fitting	1877	12	Thrust Race (6)	TRA-512M1			
3	Bevel Pinion Gear	151-P	13	Idler Pin (3)	IP-5725B			
4	Ball Bearing	201KD	14	Needle Bearing (3)	B-57i			
5	Snap Ring	SH-37	15	Idler Gear (3)	161616S2			
6	Attachment Coupling	MC15-2068	16	Bevel Gear	151-G			
7	Drive Shaft	DS-S1993	17	Drive Gear	161425-DG			
8	Screw #1	S-1410	18	Dowel Pin #2 (2)	DP-1208			
9	Bushing (2)	A-5509	19	Bottom Plate	CF155-P			
10	Socket Gear	161625S-XX	20	Screw #2 (6)	S-806			