



D & D PRODUCTION INC.®

ASSEMBLY NO. CF155 HEAD NO. 102A5

FOR ATLAS COPCO LTD 38N55-RE MOTOR

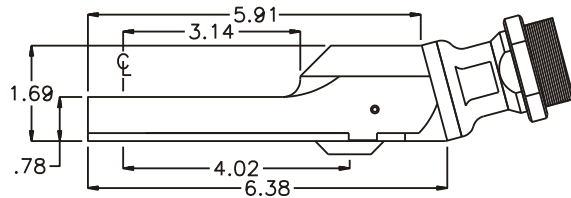
CROWFOOT ASS'Y
Rev. A
11-07-03

2500 WILLIAMS DRIVE • WATERFORD, MI • 48328

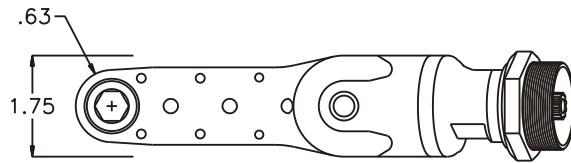
PHONE : (248) 334-2112 •

FAX : (248) 334-0062

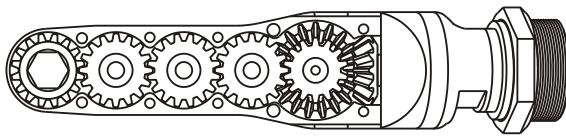
SIDE VIEW



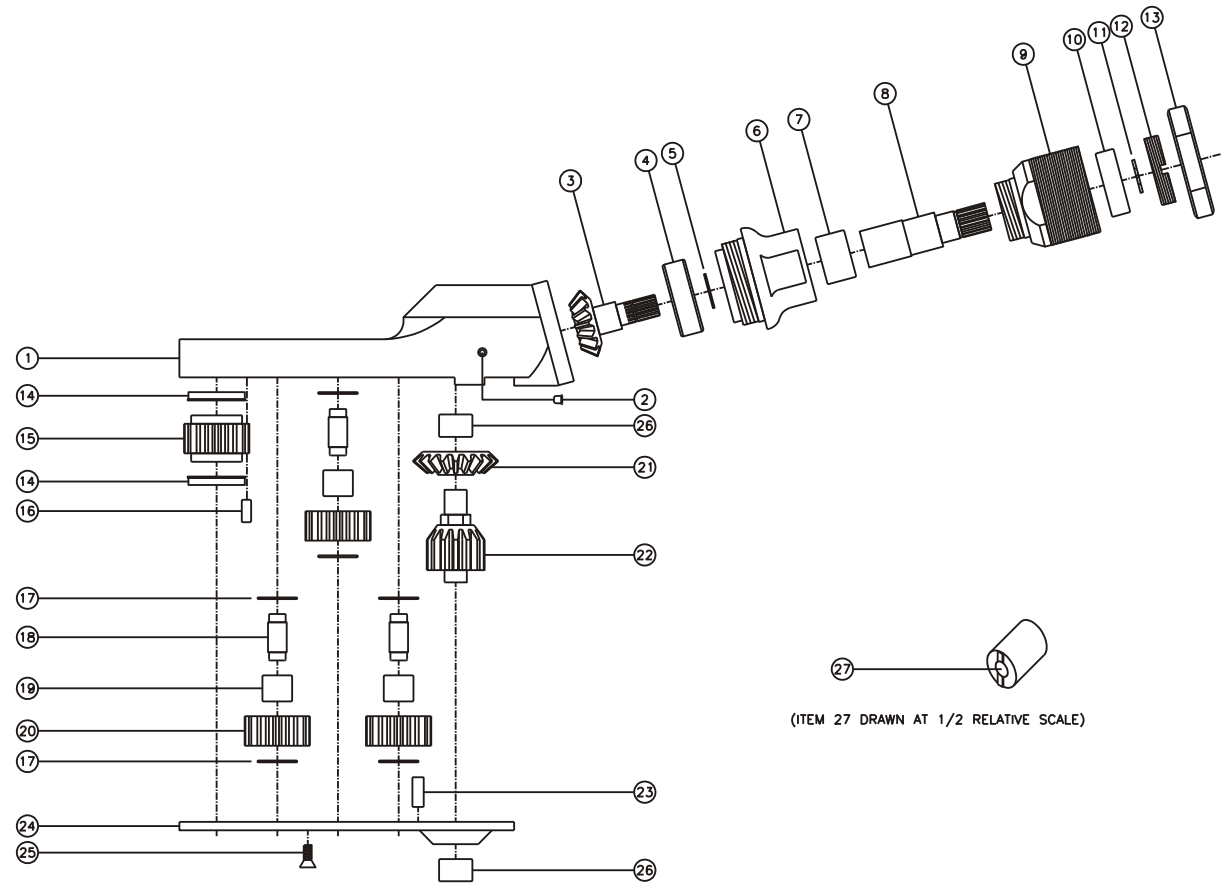
TOP VIEW



GEAR ASSEMBLY



PARTS BLOWOUT



ITEM	DESCRIPTION	PART NO.	ITEM	DESCRIPTION	PART NO.	ITEM	DESCRIPTION	PART NO.
1	Gear Housing	CF155-H2	11	Snap Ring	5160-47	21	Bevel Gear	151-G
2	Grease Fitting	1877	12	End Nut	EN-3808	22	Drive Gear	161425-DG
3	Bevel Pinion Gear	151-P	13	Lock Nut	LN-4209	23	Dowel Pin #2 (2)	DP-1208
4	Ball Bearing	201KD	14	Bushing (2)	A-5509	24	Bottom Plate	CF155-P
5	Snap Ring	SH-37	15	Socket Gear	161625S-XX	25	Screw (6)	S-806
6	Attachment Coupling	MC15-A	16	Dowel Pin #1 (2)	DP-1006	26	Needle Bearing (2)	M-661
7	Needle Bearing	B-108i	17	Thrust Race (6)	TRA-512M1	27	End Nut Socket (Optional)	ENT-3808
8	Drive Shaft	DS-S2069	18	Idler Pin (3)	IP-5725B			
9	Motor Coupling	MC-13	19	Needle Bearing (3)	B-57i			
10	Ball Bearing	6001	20	Idler Gear (3)	161616S2			