



D & D PRODUCTION INC.®

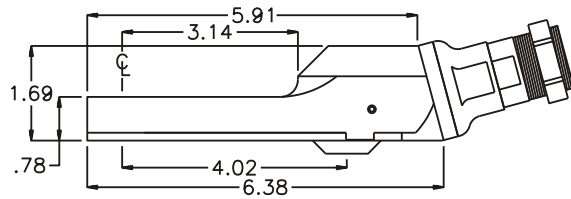
ASSEMBLY NO. CF155 HEAD NO. 102A3

FOR ATLAS COPCO LTV28XR2510 MOTOR

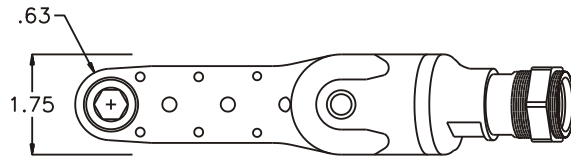
CROWFOOT ASS'Y
Rev. B
11-11-03

2500 WILLIAMS DRIVE • WATERFORD, MI • 48328 PHONE : (248) 334-2112 • FAX : (248) 334-0062

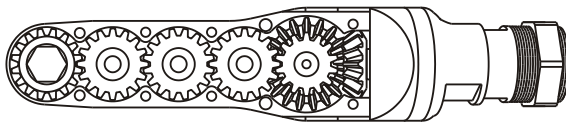
SIDE VIEW



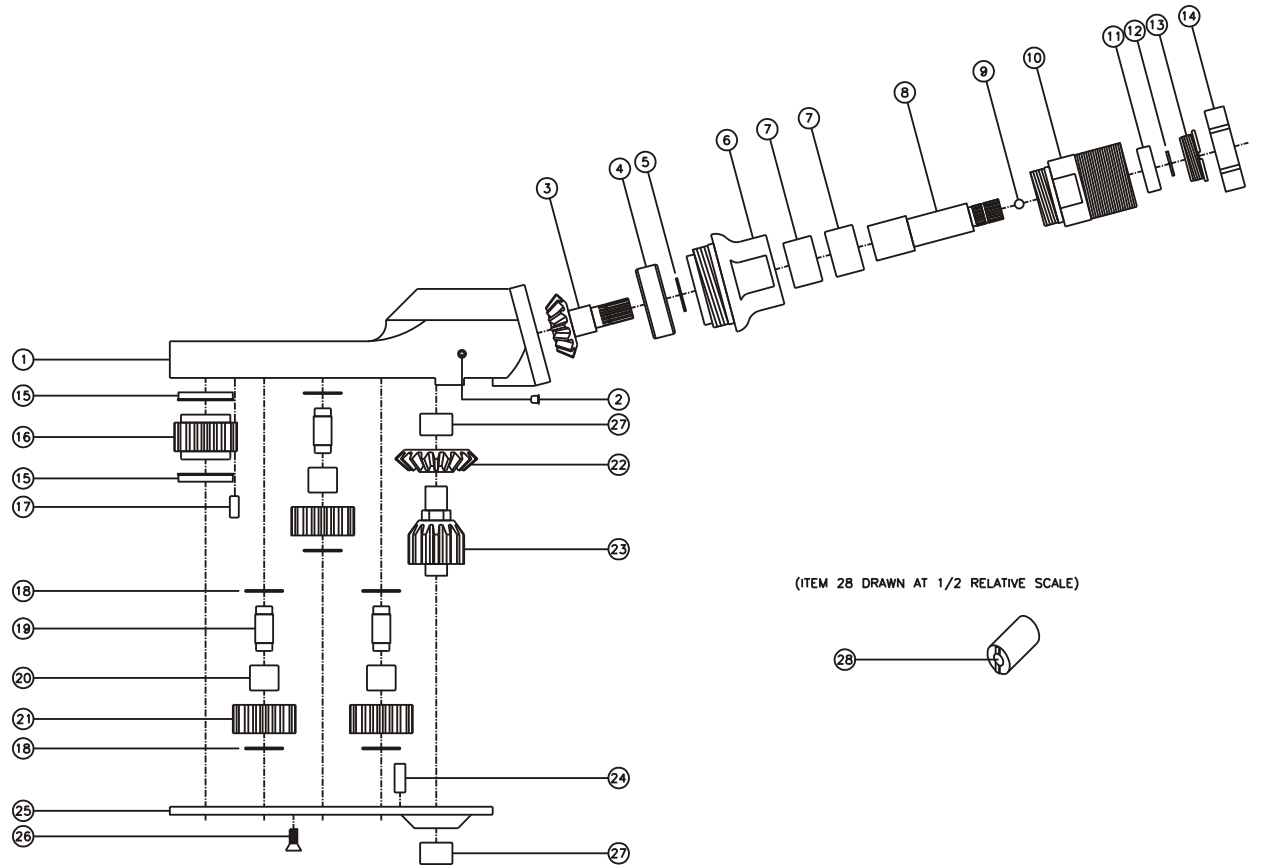
TOP VIEW



GEAR ASSEMBLY



PARTS BLOWOUT



ITEM	DESCRIPTION	PART NO.	ITEM	DESCRIPTION	PART NO.	ITEM	DESCRIPTION	PART NO.
1	Gear Housing	CF155-H2	11	Ball Bearing	699Zi	21	Idler Gear (3)	161616S2
2	Grease Fitting	1877	12	Snap Ring	51111	22	Bevel Gear	151-G
3	Bevel Pinion Gear	151-P	13	End Nut	EN-0976B	23	Drive Gear	161425-DG
4	Ball Bearing	201KD	14	Motor Nut	N-30M1LH11	24	Dowel Pin #2 (2)	DP-1208
5	Snap Ring	SH-37	15	Bushing (2)	A-5509	25	Bottom Plate	CF155-P
6	Attachment Coupling	MC15-A	16	Socket Gear	161625S-XX	26	Screw (6)	S-806
7	Needle Bearing (2)	B-108i	17	Dowel Pin #1 (2)	DP-1006	27	Needle Bearing (2)	M-661
8	Drive Shaft	DS-S2074-A	18	Thrust Race (6)	TRA-512M1	28	End Nut Socket (Optional)	ENT-10
9	Ball Bearing	LB-4M	19	Idler Pin (3)	IP-5725B			
10	Motor Coupling	MC-28	20	Needle Bearing (3)	B-57i			