



D & D PRODUCTION INC.

ASSEMBLY NO. CF155 HEAD NO. 102A2

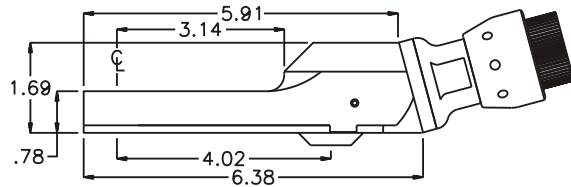
CROWFOOT ASS'Y
Rev. A
08-20-02

FOR ATLAS COPCO ETV S7-(70,100)-13CTADS MOTOR

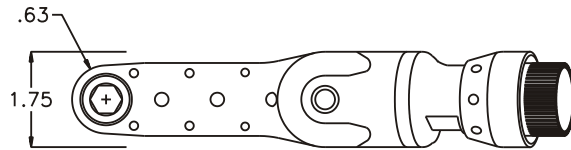
2500 WILLIAMS DRIVE • WATERFORD, MI • 48328

PHONE : (248) 334-2112 • FAX : (248) 334-0062

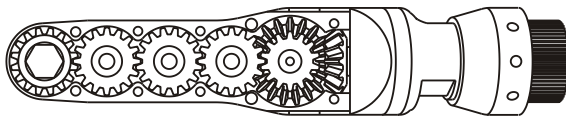
SIDE VIEW



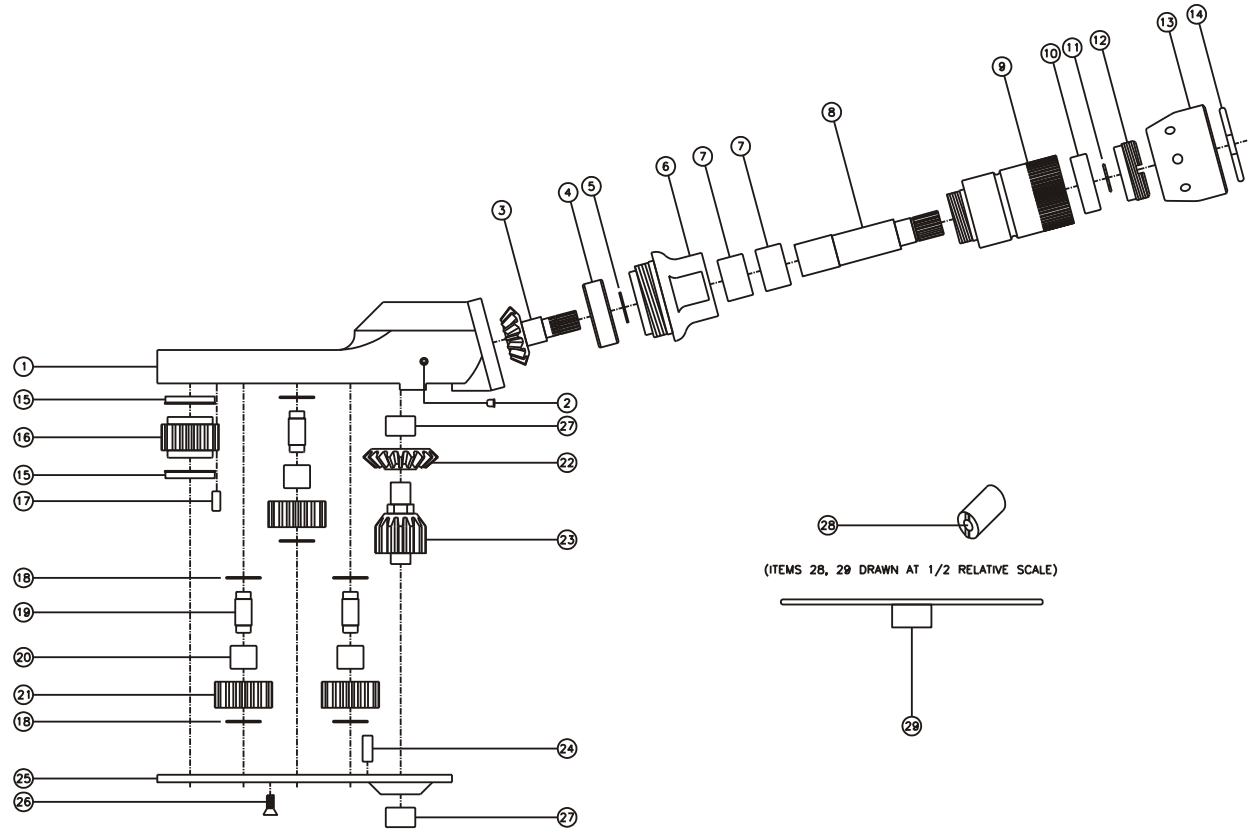
TOP VIEW



GEAR ASSEMBLY



PARTS BLOWOUT



ITEM	DESCRIPTION	PART NO.	ITEM	DESCRIPTION	PART NO.	ITEM	DESCRIPTION	PART NO.
1	Gear Housing	CF155-H2	11	Snap Ring	51114	21	Idler Gear (3)	161616S2
2	Grease Fitting	1877	12	End Nut	EN-0874	22	Bevel Gear	151-G
3	Bevel Pinion Gear	151-P	13	Motor Nut	N-0848	23	Drive Gear	161425-DG
4	Ball Bearing	201KD	14	Circlip	0849-C	24	Dowel Pin #2 (2)	DP-1208
5	Snap Ring	SH-37	15	Bushing (2)	A-5509	25	Bottom Plate	CF155-P
6	Attachment Coupling	MC15-A	16	Socket Gear	161625S-XX	26	Screw (6)	S-806
7	Needle Bearing (2)	B-108i	17	Dowel Pin #1 (2)	DP-1006	27	Needle Bearing (2)	M-661
8	Drive Shaft	DS-S2077	18	Thrust Race (6)	TRA-512M1	28	End Nut Socket (Optional)	ENT-ETV13
9	Motor Coupling	MC-ETV13B	19	Idler Pin (3)	IP-5725B	29	Motor Coupling Wrench (Optional)	CW-ETV13
10	Ball Bearing	6001	20	Needle Bearing (3)	B-57i			