

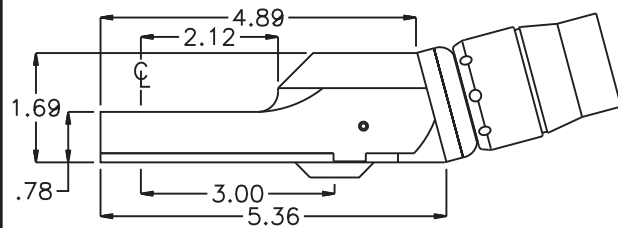


ASSEMBLY NO. CF154 HEAD NO. 106C

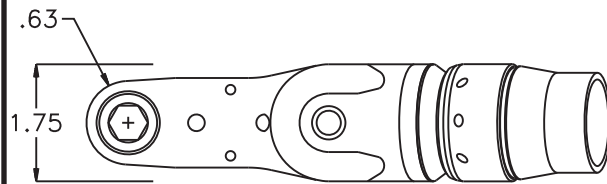
CROWFOOT ASS'Y
Rev. A
10-31-06

2500 WILLIAMS DRIVE • WATERFORD, MI • 48328 PHONE : (248) 334-2112 • FAX : (248) 334-0062

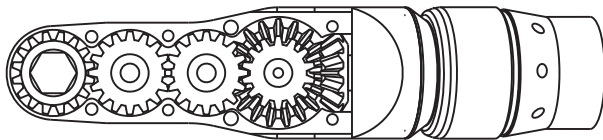
SIDE VIEW



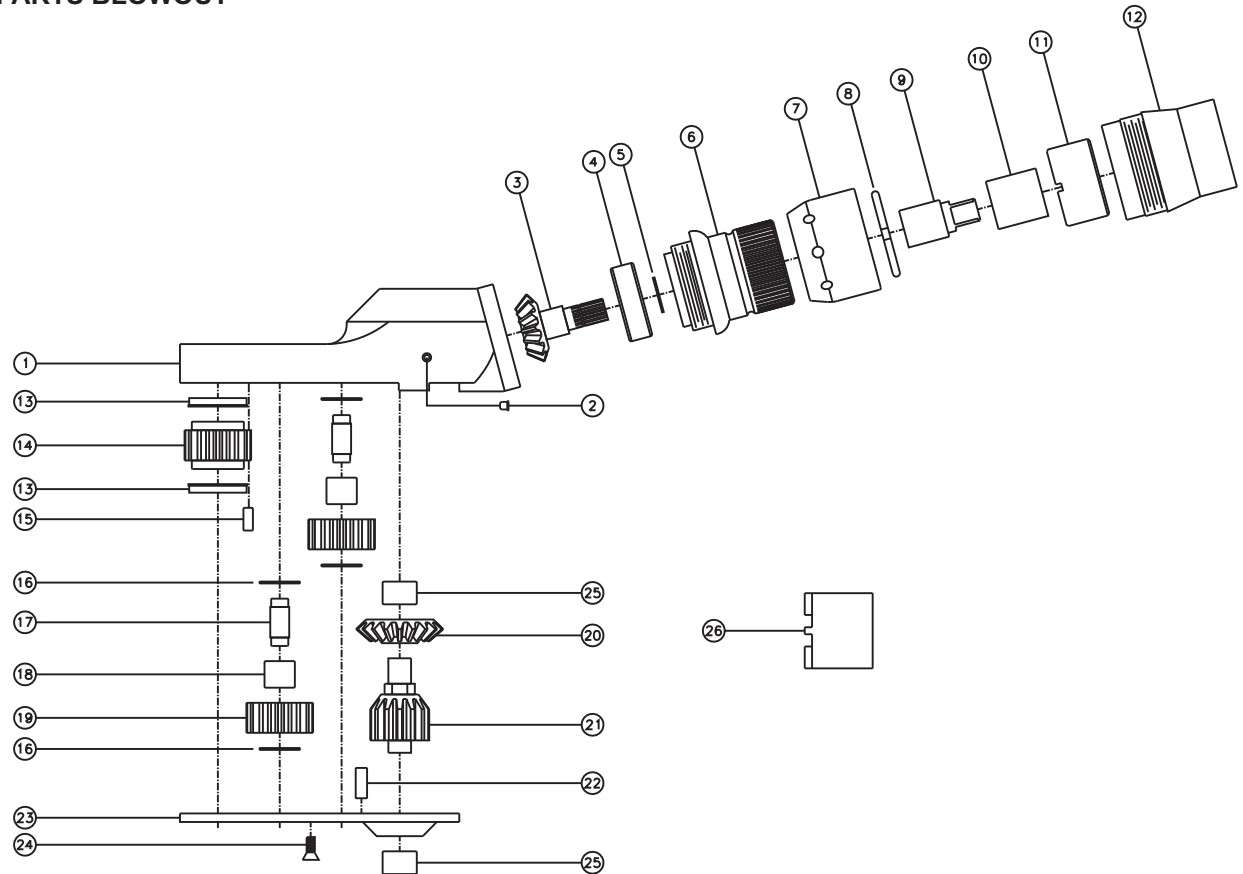
TOP VIEW



GEAR ASSEMBLY



PARTS BLOWOUT



| ITEM | DESCRIPTION | PART NO. | ITEM | DESCRIPTION | PART NO. | ITEM | DESCRIPTION | PART NO. |
|------|-------------------|--------------|------|--------------------|-------------|------|---------------------------|-----------|
| 1 | Gear Housing | CF154-H2 | 11 | Locknut | LN-2123-GR | 21 | Drive Gear | 161425-DG |
| 2 | Grease Fitting | 1877 | 12 | Motor Coupling | MC15-48D3-C | 22 | Dowel Pin #2 (2) | DP-1208 |
| 3 | Bevel Pinion Gear | 151-P | 13 | Bushing (2) | A-5509 | 23 | Bottom Plate | CF154-P |
| 4 | Ball Bearing | 201KD | 14 | Socket Gear | 161625S-XX | 24 | Screw (4) | S-806 |
| 5 | Snap Ring | SH-37 | 15 | Dowel Pin #1 (2) | DP-1006 | 25 | Needle Bearing (2) | M-661 |
| 6 | Assembly Coupling | MC15-48D3-B2 | 16 | Thrust Race (4) | TRA-512M1 | 26 | End Nut Socket (Optional) | ENT-48D3 |
| 7 | Nut | N-D48-B | 17 | Idler Pin (2) | IP-5725B | 27 | | |
| 8 | Circlip | D48-C | 18 | Needle Bearing (2) | B-57i | 28 | | |
| 9 | Driver | DS-061940 | 19 | Idler Gear (2) | 161616S2 | 29 | | |
| 10 | Drive Shaft | DS-062627 | 20 | Bevel Gear | 151-G | 30 | | |