



D & D PRODUCTION INC.

# ASSEMBLY NO. 942076C-00

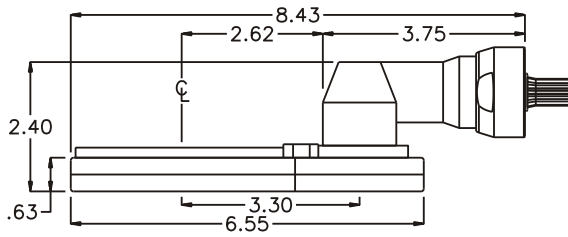
## HEAD NO. 9002

CROWFOOT ASS'Y  
Rev. A  
08-18-01

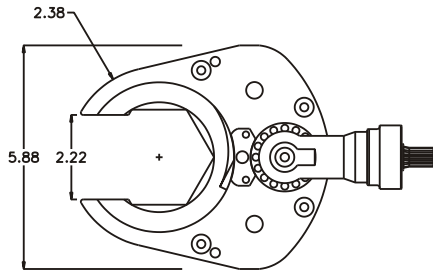
2500 WILLIAMS DRIVE • WATERFORD, MI • 48328

PHONE : (248) 334-2112 • FAX : (248) 334-0062

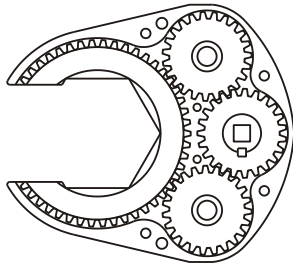
### SIDE VIEW



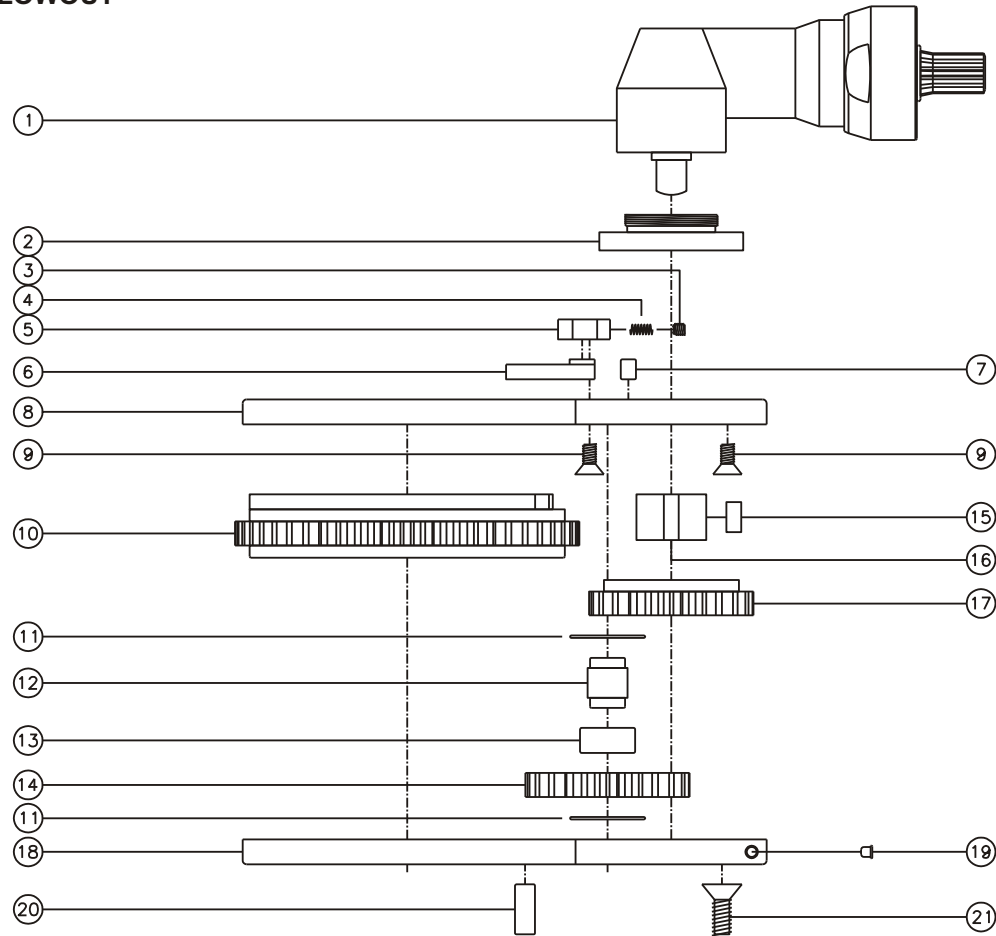
### TOP VIEW



### GEAR ASSEMBLY



### PARTS BLOWOUT



ITEM	DESCRIPTION	PART NO.	ITEM	DESCRIPTION	PART NO.	ITEM	DESCRIPTION	PART NO.
1	Angle Head	32	11	Thrust Race (4)	TRA-815	21	Screw #2 (4)	S-1410
2	Angle Head Adapter	HA-2807-32	12	Idler Pin (2)	IP-8520A			
3	Set Screw	SS-802	13	Needle Bearing (2)	B-85			
4	Pawl Spring	CS-0412	14	Idler Gear (2)	122310			
5	Pawl Housing	PHA1	15	Key	K-31612			
6	Pawl	1506-PS-P	16	Gear Hub Insert	H-1414-38SD			
7	Dowel Pin #1 (3)	DP-1204	17	Drive Gear	122310-KD			
8	Gear Housing (Top)	942076C-00-H	18	Gear Housing (Bottom)	942076C-00-P			
9	Screw #1 (6)	S-1006	19	Grease Fitting	1877			
10	Socket Cam Gear	125026SC-1-XX	20	Dowel Pin #2 (2)	DP-1620			