



D & D PRODUCTION INC.

ASSEMBLY NO. 687268

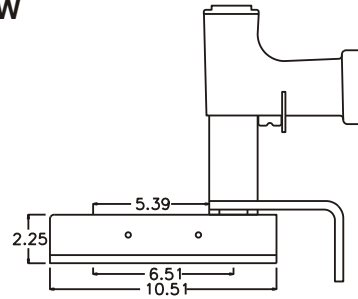
HEAD NO. 3850

CROWFOOT ASS'Y
Rev. A
10-19-92

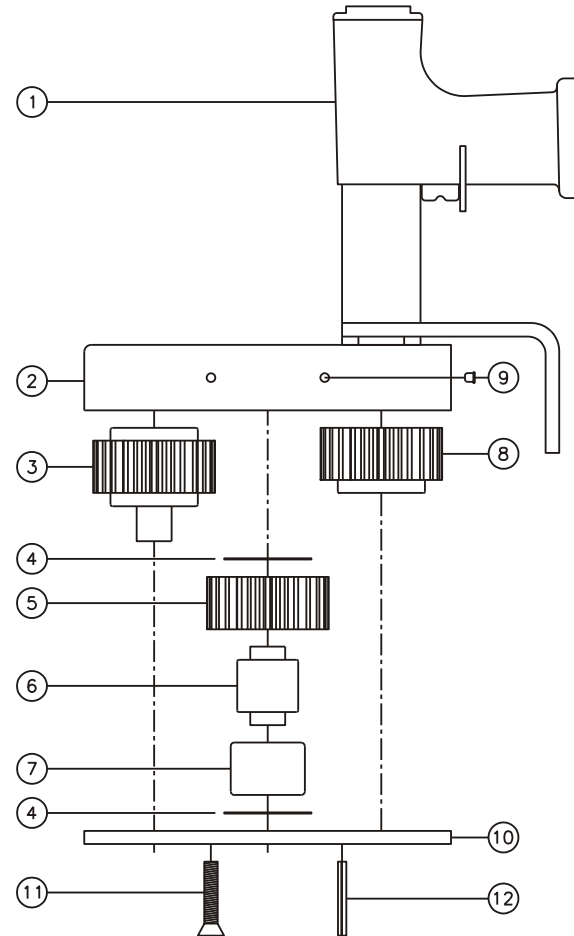
2500 WILLIAMS DRIVE • WATERFORD, MI • 48328

PHONE : (248) 334-2112 • FAX : (248) 334-0062

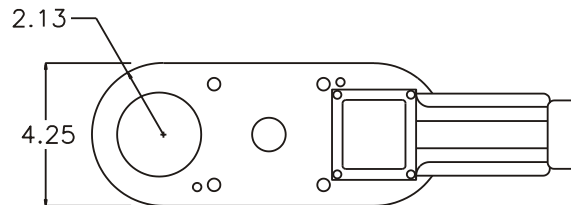
SIDE VIEW



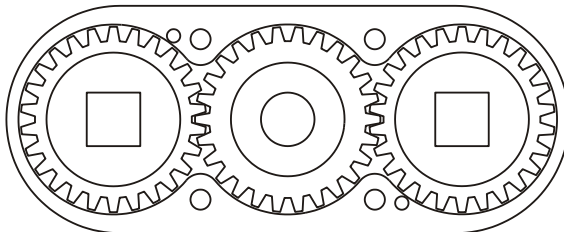
PARTS BLOWOUT



TOP VIEW



GEAR ASSEMBLY



ITEM	DESCRIPTION	PART NO.	ITEM	DESCRIPTION	PART NO.	ITEM	DESCRIPTION	PART NO.
1	Pistol Grip Nutrunner	LTP 51 PH0005-25	11	Screw (4)	S-3834			
2	Gear Housing	687268-H	12	Roll Pin (2)	RP-1636			
3	Socket Gear	082668-XX						
4	Thrust Race (2)	TRA-2840						
5	Idler Gear	082668						
6	Idler Pin	IP-282436						
7	Needle Bearing	B-2824						
8	Drive Gear	082668-328DF						
9	Grease Fitting (2)	1885						
10	Bottom Plate	687268-P						