



D & D PRODUCTION INC.

# ASSEMBLY NO. 562438M-00

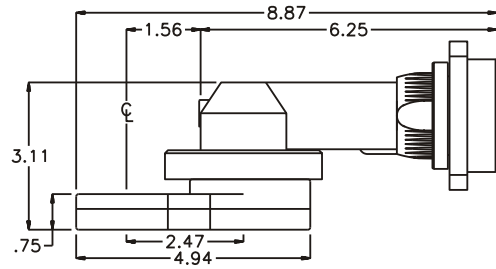
## HEAD NO. 8750

CROWFOOT ASS'Y  
Rev. B  
02-17-01

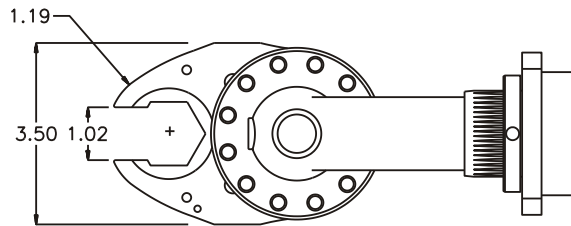
2500 WILLIAMS DRIVE • WATERFORD, MI • 48328

PHONE : (248) 334-2112 • FAX : (248) 334-0062

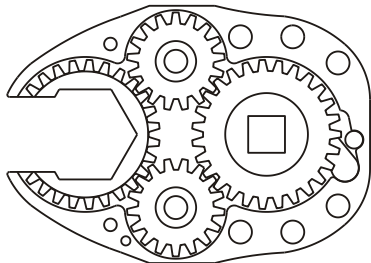
### SIDE VIEW



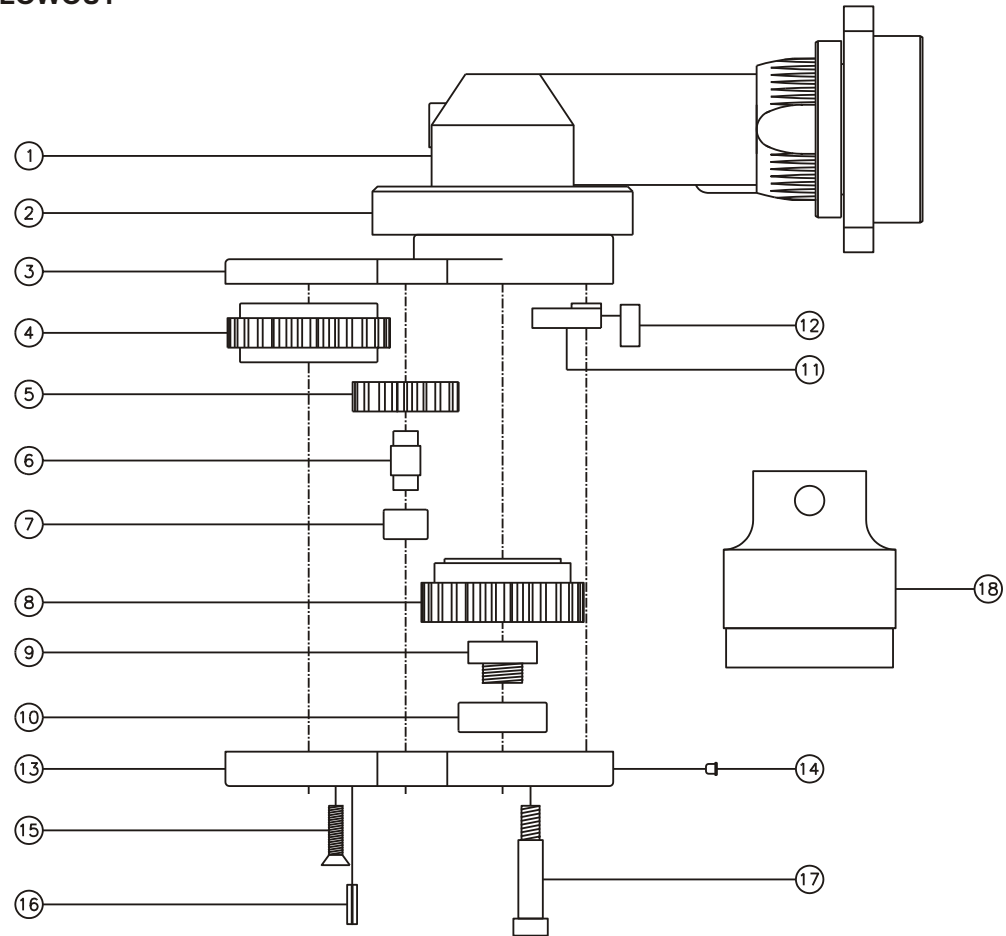
### TOP VIEW



### GEAR ASSEMBLY



### PARTS BLOWOUT



| ITEM | DESCRIPTION        | PART NO.     | ITEM | DESCRIPTION              | PART NO.     | ITEM | DESCRIPTION | PART NO. |
|------|--------------------|--------------|------|--------------------------|--------------|------|-------------|----------|
| 1    | Angle Head         | GSE 5720     | 11   | Pawl                     | 1108-PS-P    |      |             |          |
| 2    | Angle Head Adapter | HA-5720A3    | 12   | Pawl Spring              | RSS-0417     |      |             |          |
| 3    | Gear Housing (Top) | 562438M-00-H | 13   | Gear Housing (Bottom)    | 562438M-00-P |      |             |          |
| 4    | Socket Gear        | 142724-1-XX  | 14   | Grease Fitting           | 1877         |      |             |          |
| 5    | Idler Gear (2)     | 141712       | 15   | Screw (2)                | S-1012       |      |             |          |
| 6    | Idler Pin (2)      | IP-6624A     | 16   | Roll Pin                 | RP-808       |      |             |          |
| 7    | Needle Bearing (2) | B-66         | 17   | Shoulder Bolt (6)        | SB-516       |      |             |          |
| 8    | Drive Cam Gear     | 142726-SDC   | 18   | Bearing Cap Removal Tool | BCS-5720     |      |             |          |
| 9    | Drive Cam Pin      | TPP-14616-S  |      |                          |              |      |             |          |
| 10   | Needle Bearing     | B-146        |      |                          |              |      |             |          |