



D & D PRODUCTION INC.

ASSEMBLY NO. 561615-1

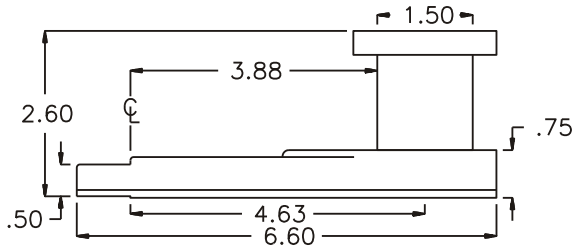
HEAD NO. 8370

CROWFOOT ASS'Y
Rev. A
08-04-92

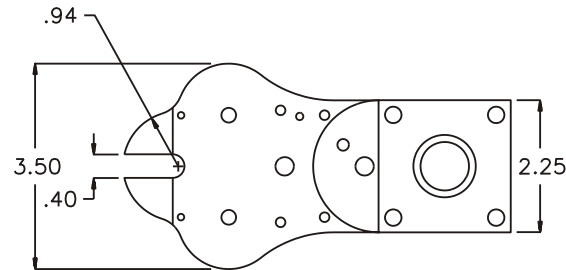
2500 WILLIAMS DRIVE • WATERFORD, MI • 48328

PHONE : (248) 334-2112 • FAX : (248) 334-0062

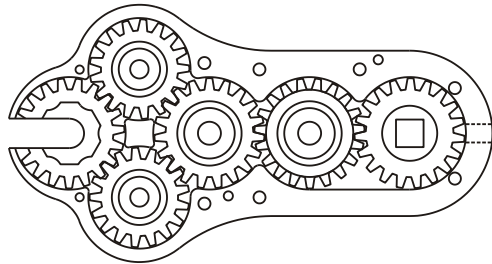
SIDE VIEW



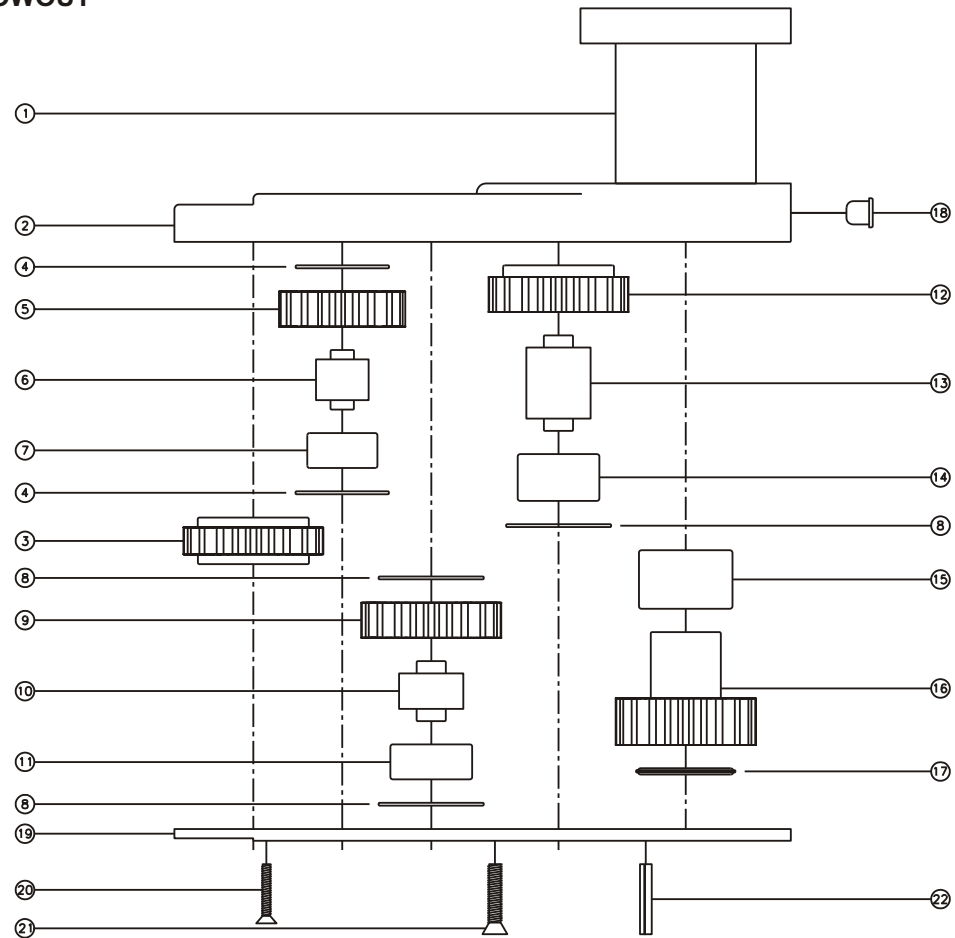
TOP VIEW



GEAR ASSEMBLY



PARTS BLOWOUT



ITEM	DESCRIPTION	PART NO.	ITEM	DESCRIPTION	PART NO.	ITEM	DESCRIPTION	PART NO.
1	Mounting Bracket	MU-2987	11	Lg. Needle Bearing	B-116	21	Screw #2 (7)	S-810
2	Gear Housing	561615-1-H	12	Cam Gear	141916-C	22	Roll Pin (2)	RP-808
3	Socket Gear	141916-1-XX	13	Cam Pin	IP-11824			
4	Sm. Thrust Race (4)	TRA-916	14	Cam Needle Bearing	B-118			
5	Sm. Idler Gear (2)	141712	15	Needle Bearing	B-1210			
6	Sm. Idler Pin (2)	IP-9620	16	Drive Gear	141938-SD			
7	Sm. Needle Bearing (2)	B-96	17	Thrust Bearing	NTA-815			
8	Lg. Thrust Race (3)	TRA-1018	18	Grease Fitting	1877			
9	Lg. Idler Gear	141912	19	Bottom Plate	561615-1-P			
10	Lg. Idler Pin	IP-11620	20	Screw #1 (2)	S-408			