



D & D PRODUCTION INC.®

ASSEMBLY NO. 482848D15R-00

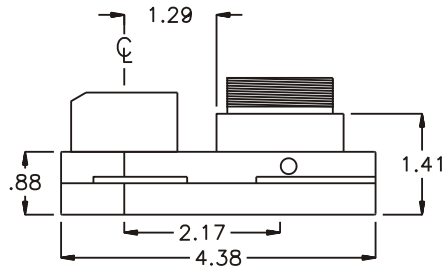
HEAD NO. 8679

CROWFOOT ASS'Y
Rev. B
11-19-03

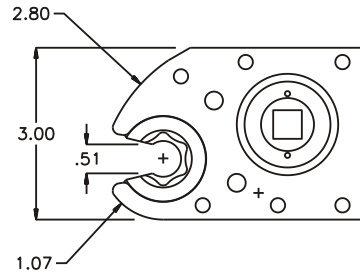
2500 WILLIAMS DRIVE • WATERFORD, MI • 48328

PHONE : (248) 334-2112 • FAX : (248) 334-0062

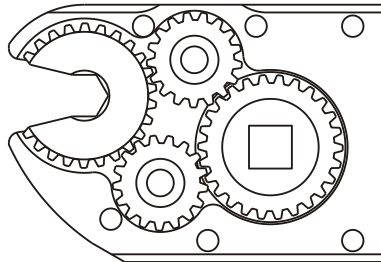
SIDE VIEW



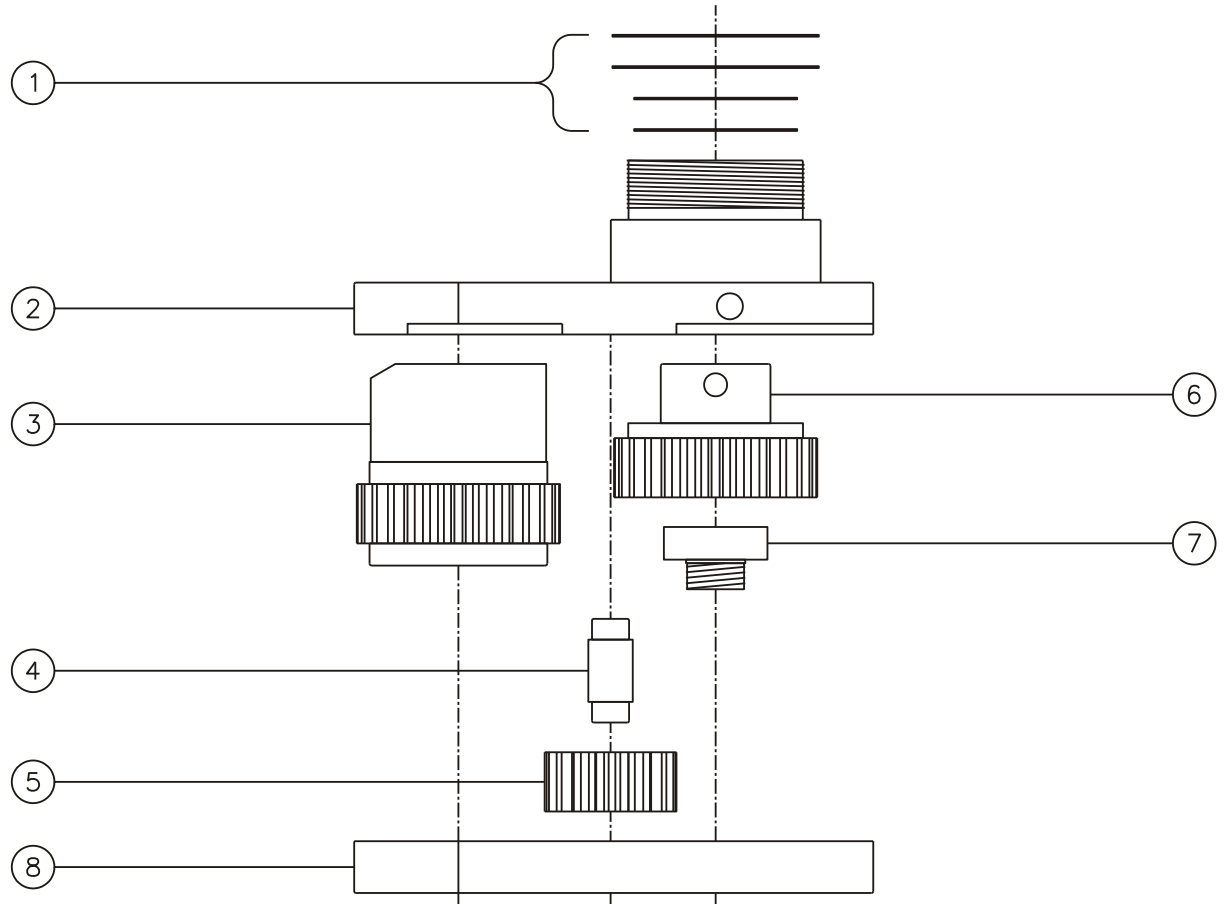
TOP VIEW



GEAR ASSEMBLY



PARTS BLOWOUT



| ITEM | DESCRIPTION | PART NO. | ITEM | DESCRIPTION | PART NO. | ITEM | DESCRIPTION | PART NO. |
|------|--------------------------------|----------------------|------|-------------|----------|------|-------------|----------|
| 1 | Shim Set | W-R4801-S | | | | | | |
| 2 | Gear Housing (Top) | 482848D15R-00-H | | | | | | |
| 3 | Socket Gear | 162654-1-66/84SD-E13 | | | | | | |
| 4 | Idler Pin (2) | IP-6828 | | | | | | |
| 5 | Idler Gear / Bearing Ass'y (2) | 161716GBA | | | | | | |
| 6 | Drive Gear / Bearing Ass'y | 162636GB-SD | | | | | | |
| 7 | Drive Pin | TPP-14616 | | | | | | |
| 8 | Gear Housing (Bottom) | 482848D15R-00-P | | | | | | |