



D & D PRODUCTION INC.

ASSEMBLY NO. 464040

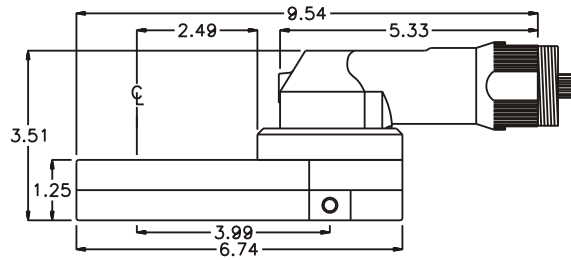
HEAD NO. 3778

CROWFOOT ASS'Y
Rev. B
08-23-01

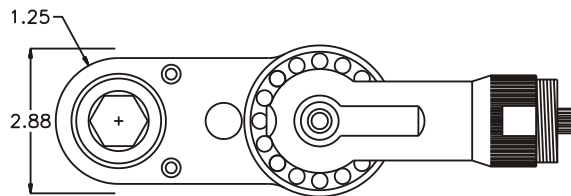
2500 WILLIAMS DRIVE • WATERFORD, MI • 48328

PHONE : (248) 334-2112 • FAX : (248) 334-0062

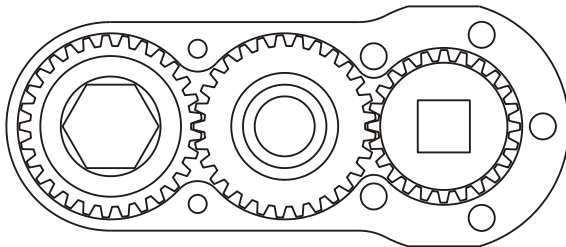
SIDE VIEW



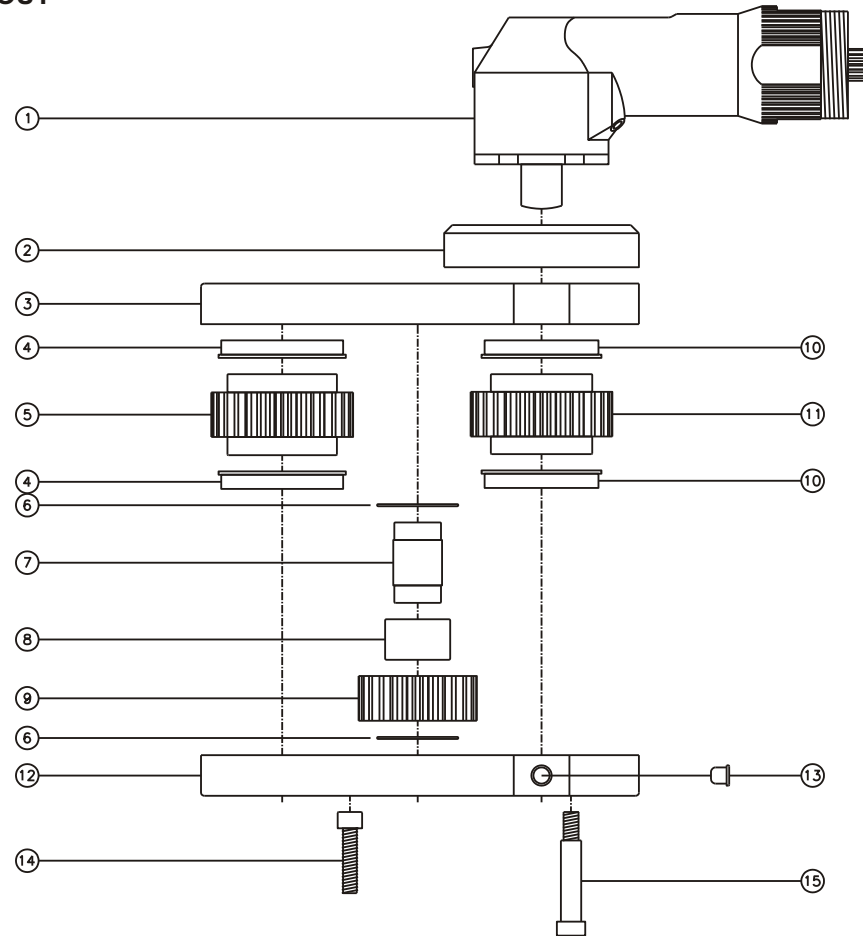
TOP VIEW



GEAR ASSEMBLY



PARTS BLOWOUT



| ITEM | DESCRIPTION | PART NO. | ITEM | DESCRIPTION | PART NO. | ITEM | DESCRIPTION | PART NO. |
|------|--------------------|------------|------|-----------------------|-------------|------|-------------|----------|
| 1 | Angle Head | Rotor 4805 | 11 | Drive Gear | 142440-58SD | | | |
| 2 | Collar Adapter | CA-4821 | 12 | Gear Housing (Bottom) | 464040-P | | | |
| 3 | Gear Housing (Top) | 464040-H | 13 | Grease Fitting | 1885 | | | |
| 4 | Bushing (2) | A-10817 | 14 | Screw (2) | S-1416SH | | | |
| 5 | Socket Gear | 142940-XX | 15 | Shoulder Bolt (5) | SB-520 | | | |
| 6 | Thrust Race (2) | TRA-1220 | | | | | | |
| 7 | Idler Pin | IP-121040 | | | | | | |
| 8 | Needle Bearing | B-1210 | | | | | | |
| 9 | Idler Gear | 142922 | | | | | | |
| 10 | Bushing (2) | A-10017 | | | | | | |