

D & D PRODUCTION INC.®

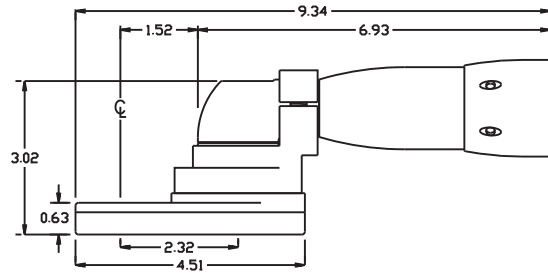
# ASSEMBLY NO. 442031A-00

## HEAD NO. 8631

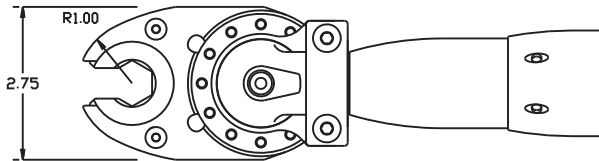
TUBENUT ASS'Y  
Rev. A  
06-16-10

2500 WILLIAMS DRIVE • WATERFORD, MI • 48328 PHONE : (248) 334-2112 • FAX : (248) 334-0062

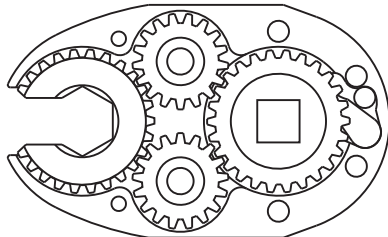
### SIDE VIEW



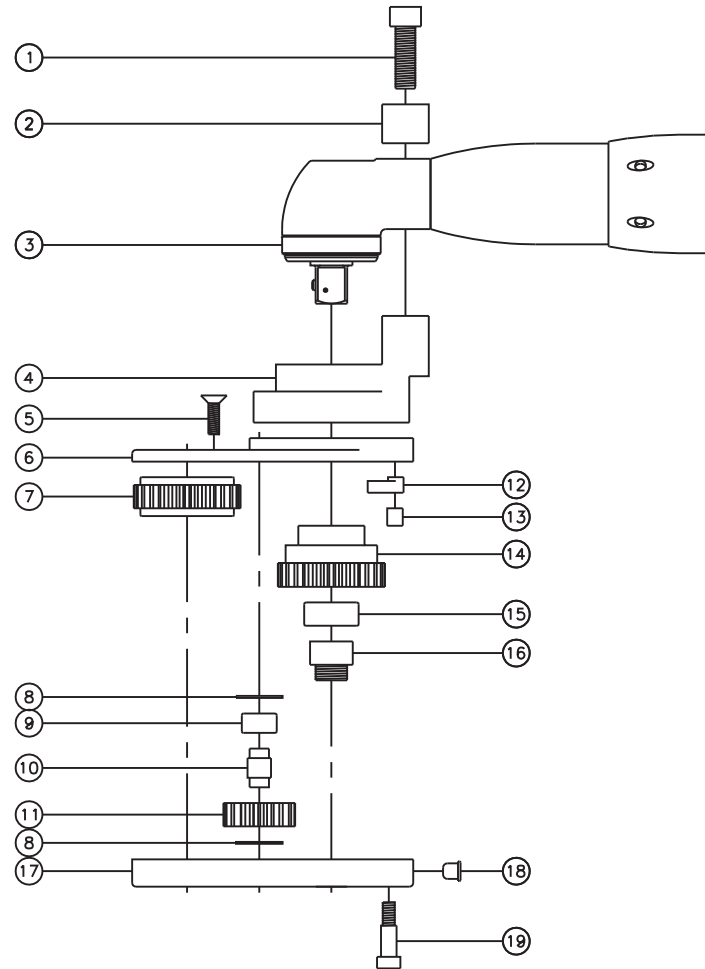
### TOP VIEW



### GEAR ASSEMBLY



### PARTS BLOWOUT



ITEM	DESCRIPTION	PART NO.	ITEM	DESCRIPTION	PART NO.	ITEM	DESCRIPTION	PART NO.
1	Screw #1 (2)	S-516SH	11	Idler Gear (2)	161712B			
2	Yoke	FA-5209C-ST61-13	12	Pawl	1106B-PS-P			
3	Angle Head	ETV ST61-70-13	13	Pawl Spring	RSS-0809			
4	Adapter	FA-4019B-ST61-13	14	Drive Cam Gear	162631-12SDC			
5	Screw #2 (2)	S-1010	15	Needle Bearing	B-116			
6	Gear Housing (Top)	442031A-00-H	16	Drive Cam Pin	TP-11620			
7	Socket Gear	162620-1-XX	17	Gear Housing (Bottom)	442031A-00-P			
8	Thrust Race (4)	TRA-512	18	Grease Fitting	1885			
9	Needle Bearing (2)	B-65	19	Shoulder Bolt (4)	SB-408			
10	Idler Pin (2)	IP-6520						