



D & D PRODUCTION INC.®

ASSEMBLY NO. 421928-0-QD68

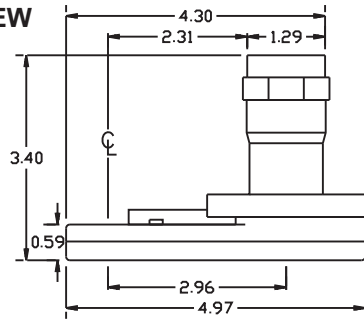
HEAD NO. 8618

TUBENUT ASS'Y
Rev. A
12-10-10

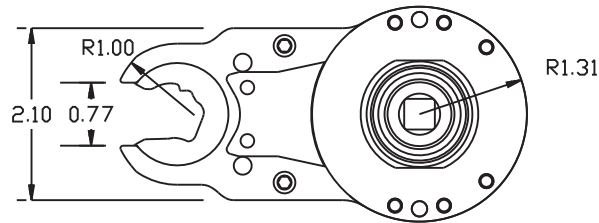
2500 WILLIAMS DRIVE • WATERFORD, MI • 48328

PHONE : (248) 334-2112 • FAX : (248) 334-0062

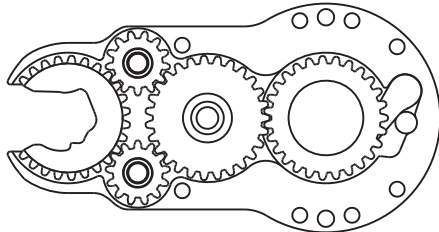
SIDE VIEW



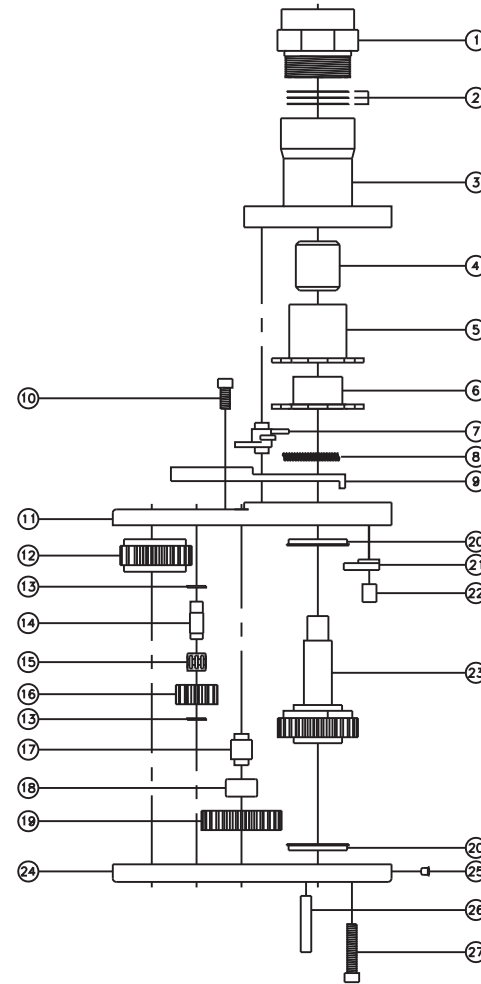
TOP VIEW



GEAR ASSEMBLY



PARTS BLOWOUT



ITEM	DESCRIPTION	PART NO.	ITEM	DESCRIPTION	PART NO.	ITEM	DESCRIPTION	PART NO.
1	Motor Adapter (Top)	HA-4269A-A015	11	Gear Housing (Top)	421928-0-H	21	Pawl	1104B-RPSP
2	Orientation Shim Set	W-4269-A015	12	Socket Gear, 14mm	202719-1-QD68	22	Pawl Spring	RSS-0810
3	Motor Adapter (Bottom)	HA-4269B-A015	13	Thrust Race (4)	TRA-411MB	23	Drive/Cam Gear	202773-38MSDC
4	Drive Shaft	DS-062528B	14	Small Idler Pin (2)	IP-6M18A	24	Gear Housing (Bottom)	421928-0-P
5	Upper Rotor	R-133302	15	Needle Bearing (2)	K698M	25	Grease Fitting	1877
6	Lower Rotor	R-131802	16	Small Idler Gear (2)	201319	26	Dowel Pin (2)	DP-1216
7	Pivot Arm	PA-2335	17	Lg. Idler Pin	IP-6518C	27	Screw #2 (6)	S-814SH
8	Spring (2)	CS-0432	18	Needle Bearing	B-65			
9	Centering Slide	SL3-.916B	19	Large Idler Gear	202711			
10	Screw #1 (2)	S-806SH	20	Bushing (2)	A-4375-M9			