



D & D PRODUCTION INC.

# ASSEMBLY NO. 403240-1

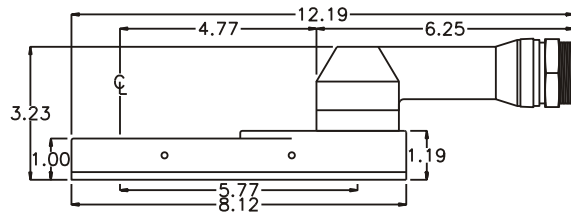
## HEAD NO. 8600

CROWFOOT ASS'Y  
Rev. C  
02-23-93

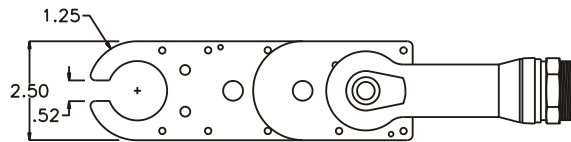
2500 WILLIAMS DRIVE • WATERFORD, MI • 48328

PHONE : (248) 334-2112 • FAX : (248) 334-0062

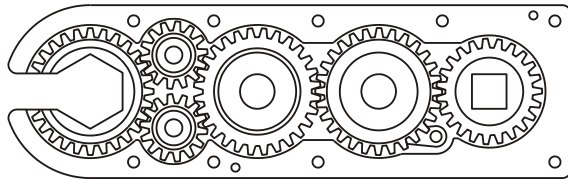
### SIDE VIEW



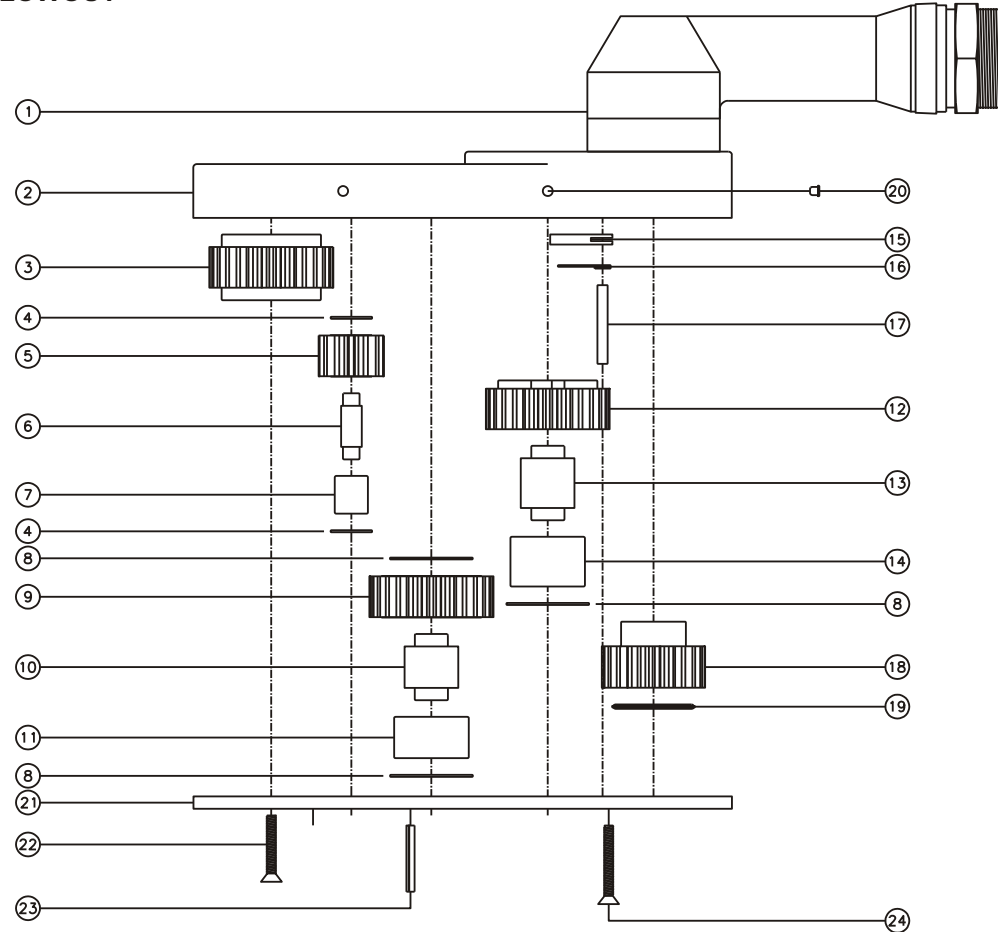
### TOP VIEW



### GEAR ASSEMBLY



### PARTS BLOWOUT



ITEM	DESCRIPTION	PART NO.	ITEM	DESCRIPTION	PART NO.	ITEM	DESCRIPTION	PART NO.
1	Angle Head	46	11	Lg. Needle Bearing	BH-1310	21	Bottom Plate	403240-1-P
2	Gear Housing	403240-1-H	12	Cam Gear	162824-C	22	Screw #1 (3)	S-816
3	Socket Gear	162832-1-XX	13	Cam Pin	IP-131238	23	Roll Pin (2)	RP-816
4	Sm. Thrust Race (4)	TRA-411	14	Needle Bearing	BH-1312	24	Screw #2 (6)	S-819
5	Sm. Idler Gear (2)	161420	15	Pawl	312750-P			
6	Sm. Idler Pin (2)	IP-5920	16	Pawl Spring	TS-156			
7	Sm. Needle Bearing (2)	B-59	17	Pawl Pin	P-0538			
8	Lg. Thrust Race (3)	TRA-1220	18	Drive Gear	162332-SD			
9	Lg. Idler Gear	162820	19	Thrust Bearing	NTA-1220			
10	Lg. Idler Pin	IP-131032	20	Grease Fitting (2)	1877			