



D & D PRODUCTION INC.®

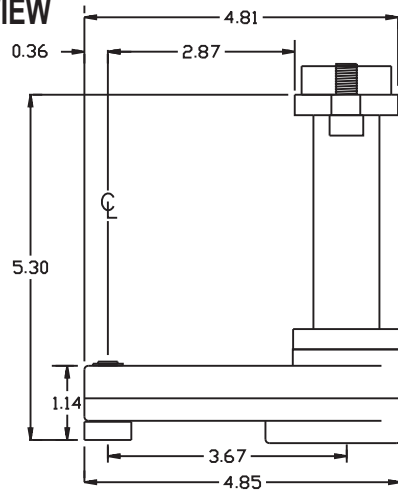
ASSEMBLY NO. 402712H-3 HEAD NO. 2000

CROWFOOT ASS'Y
Rev. A
06-08-10

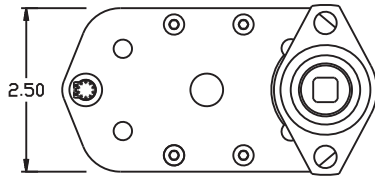
FOR BOSCH 0-608-720-053 MOTOR

2500 WILLIAMS DRIVE • WATERFORD, MI • 48328 PHONE : (248) 334-2112 • FAX : (248) 334-0062

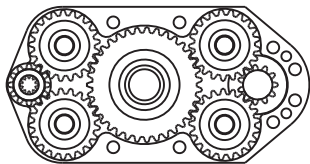
SIDE VIEW



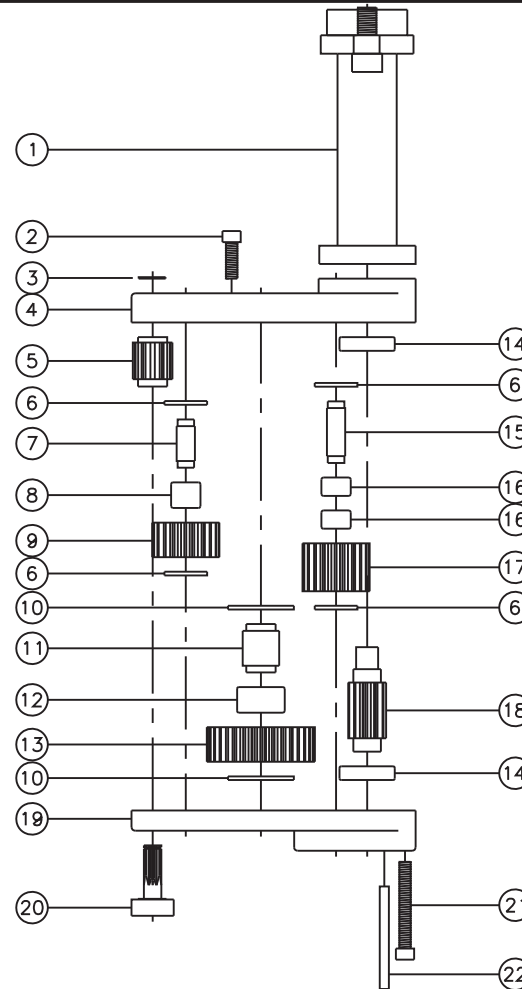
TOP VIEW



GEAR ASSEMBLY



PARTS BLOWOUT



ITEM	DESCRIPTION	PART NO.	ITEM	DESCRIPTION	PART NO.	ITEM	DESCRIPTION	PART NO.
1	Offset Coupling Assembly	OC-053-17-B	11	Idler Pin #2	IP-10726B	21	Screw #2 (4)	S-1024SH
2	Screw #1 (4)	S-1010SH	12	Needle Bearing #2	B-107	22	Dowel Pin (2)	DP-1028
3	Snap Ring	SH-27	13	Idler Gear #2	203519			
4	Gear Housing (Top)	402712H-3-H	14	Ball Bearing (2)	6901			
5	Socket Gear	201227-S2-C	15	Idler Pin #3 (2)	IP-55D34			
6	Thrust Race #1 (8)	TRB-512	16	Needle Bearing #3 (4)	B-55			
7	Idler Pin #1 (2)	IP-5726C	17	Idler Gear #3 (2)	202126			
8	Needle Bearing #1 (2)	B-57	18	Drive Gear	201157-38MSD			
9	Idler Gear #1 (2)	202119	19	Gear Housing (Bottom)	402712H-3-P			
10	Thrust Race #2 (2)	TRB-1018	20	Socket Insert	I-120916-C2			