



D & D PRODUCTION INC.

# ASSEMBLY NO. 383827A-00

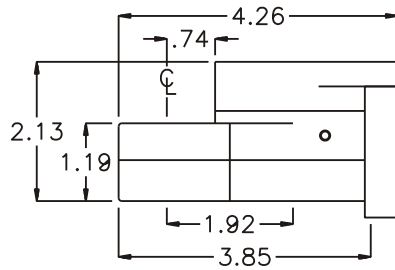
## HEAD NO. 8594

TUBE NUT ASS'Y  
Rev. B  
01-11-02

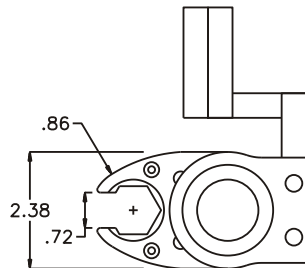
2500 WILLIAMS DRIVE • WATERFORD, MI • 48328

PHONE : (248) 334-2112 • FAX : (248) 334-0062

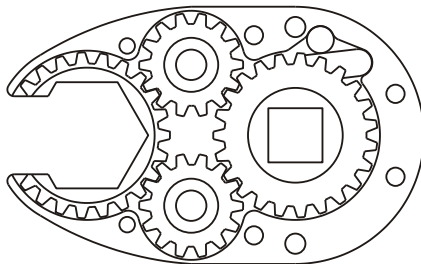
### SIDE VIEW



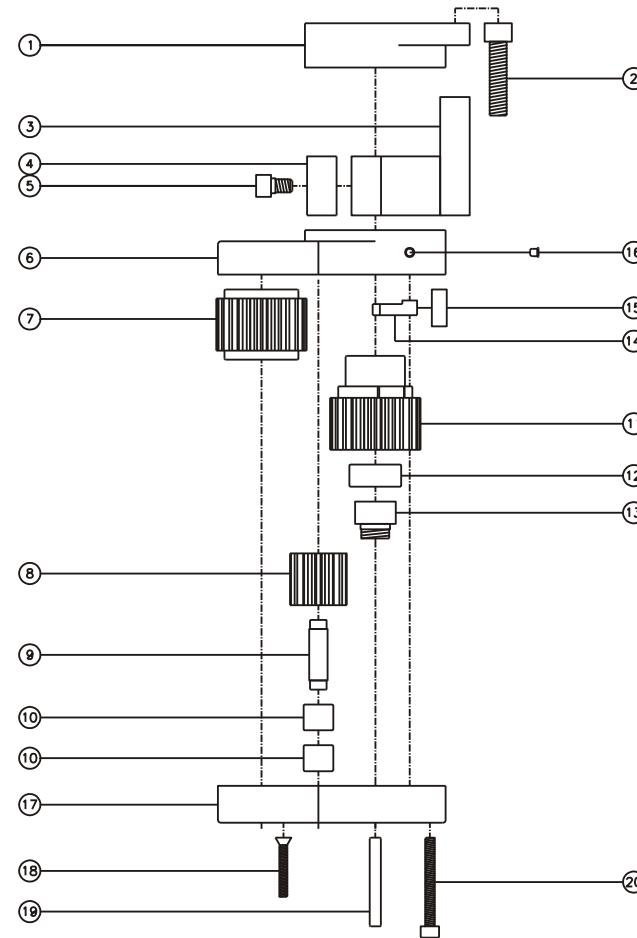
### TOP VIEW



### GEAR ASSEMBLY



### PARTS BLOWOUT



ITEM	DESCRIPTION	PART NO.	ITEM	DESCRIPTION	PART NO.	ITEM	DESCRIPTION	PART NO.
1	Motor Coupling	66IL	11	Drive Cam Gear	162351-SDC			
2	Screw #1 (2)	S-51620SH	12	Needle Bearing	B-116			
3	Reaction Bar	RB-8594	13	Drive Pin	TP-11620			
4	Wear Pad	P-8594	14	Pawl	1006-RPS-P			
5	Screw #2 (2)	S-1406SH	15	Pawl Spring	RSS-0820			
6	Gear Housing (Top)	383827A-00-H	16	Grease Fitting	1877			
7	Socket Gear	162338-1-XX	17	Gear Housing (Bottom)	383827A-00-P			
8	Idler Gear (2)	161428	18	Screw #3 (2)	S-816			
9	Idler Pin (2)	IP-5738	19	Dowel Pin (2)	DP-1224			
10	Needle Bearing (4)	B-57	20	Screw #4 (4)	S-1024SH			