



D & D PRODUCTION INC.

# ASSEMBLY NO. 383227A-00

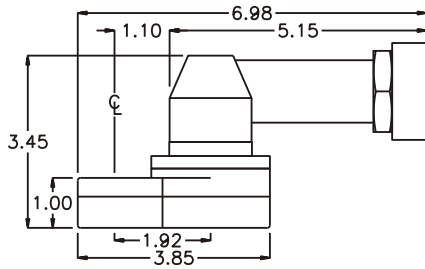
## HEAD NO. 8592

TUBE NUT ASS'Y  
Rev. A  
02-11-00

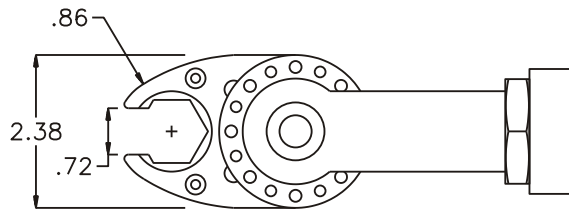
2500 WILLIAMS DRIVE • WATERFORD, MI • 48328

PHONE : (248) 334-2112 • FAX : (248) 334-0062

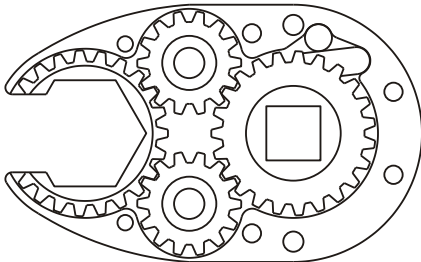
### SIDE VIEW



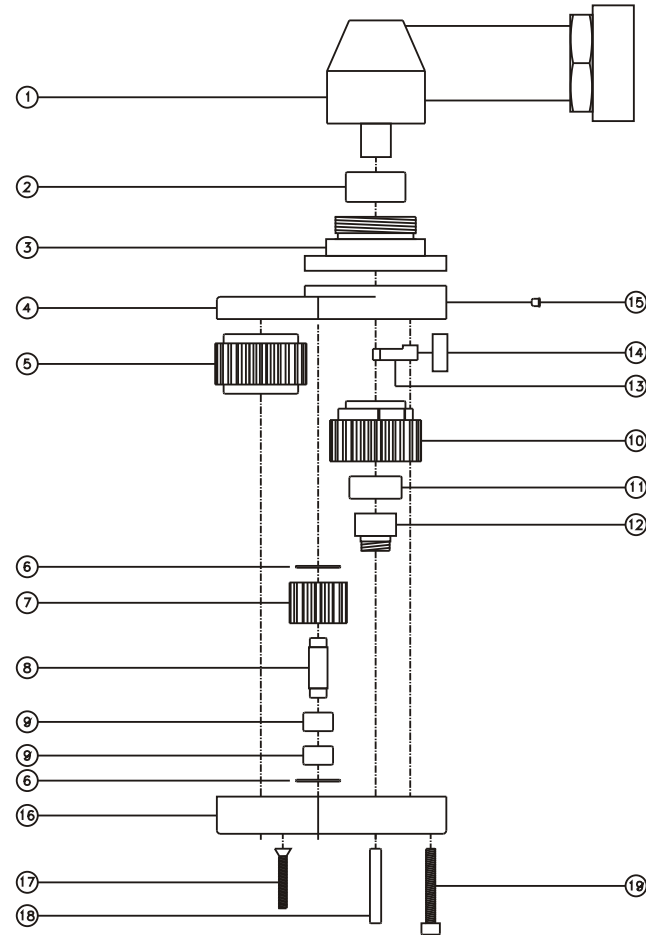
### TOP VIEW



### GEAR ASSEMBLY



### PARTS BLOWOUT



ITEM	DESCRIPTION	PART NO.	ITEM	DESCRIPTION	PART NO.	ITEM	DESCRIPTION	PART NO.
1	Angle Head	GD AH4	11	Needle Bearing	B-116			
2	Needle Bearing	B-128	12	Drive Pin	TP-11620			
3	Angle Head Adapter	HA-3817-AH4	13	Pawl	1006-RPS-P			
4	Gear Housing (Top)	383227A-00-H	14	Pawl Spring	RSS-0820			
5	Socket Gear	162332-1-XX	15	Grease Fitting	1877			
6	Thrust Race (4)	TRA-512	16	Gear Housing (Bottom)	383227A-00-P			
7	Idler Gear (2)	161422	17	Screw #1 (2)	S-816			
8	Idler Pin (2)	IP-5532	18	Dowel Pin (2)	DP-1220			
9	Needle Bearing (4)	B-55	19	Screw #2 (4)	S-1020SH			
10	Drive Cam Gear	162332-SDC						