



D & D PRODUCTION INC.

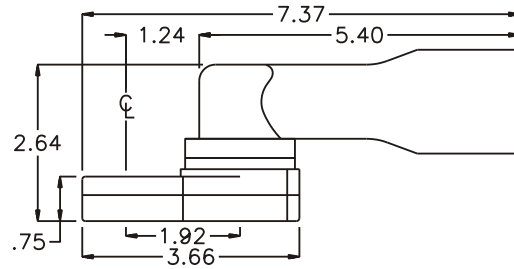
ASSEMBLY NO. 382427FL-00

HEAD NO. 8591

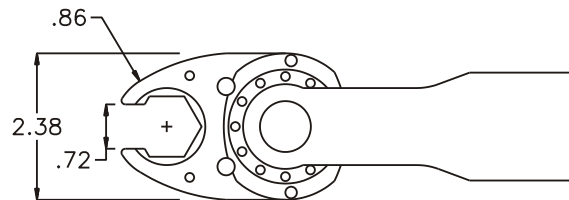
CROWFOOT ASS'Y
Rev. B
03-19-01

2500 WILLIAMS DRIVE • WATERFORD, MI • 48328 PHONE : (248) 334-2112 • FAX : (248) 334-0062

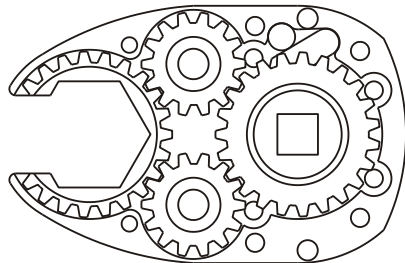
SIDE VIEW



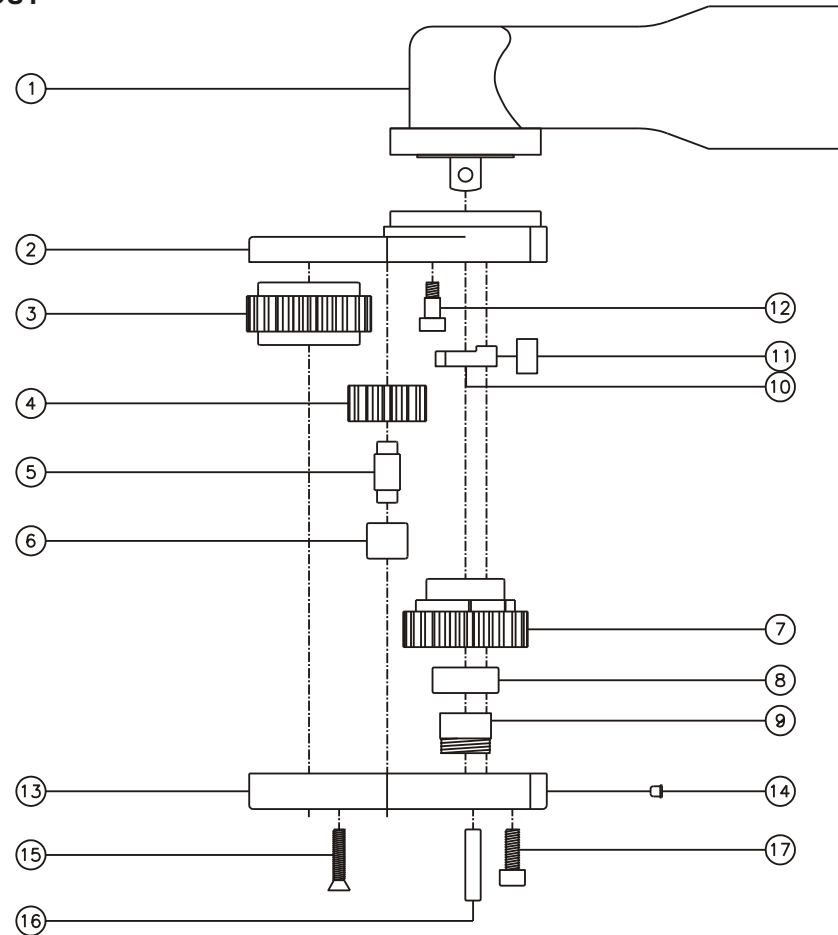
TOP VIEW



GEAR ASSEMBLY



PARTS BLOWOUT



ITEM	DESCRIPTION	PART NO.	ITEM	DESCRIPTION	PART NO.	ITEM	DESCRIPTION	PART NO.
1	Angle Head	GSE 66 (40 Nm)	11	Pawl Spring	RSS-0810			
2	Gear Housing (Top)	382427FL-00-H	12	Shoulder Bolt (4)	SB-304			
3	Socket Gear	162324-1-XX	13	Gear Housing (Bottom)	382427FL-00-P			
4	Idler Gear (2)	161414	14	Grease Fitting	1877			
5	Idler Pin (2)	IP-5724	15	Screw #1 (2)	S-812			
6	Needle Bearing (2)	B-57	16	Dowel Pin (2)	DP-1214			
7	Drive Cam Gear	162327-SDC	17	Screw #2 (4)	S-1008SH			
8	Needle Bearing	B-105						
9	Drive Pin	TP-10516						
10	Pawl	1004-RPS-P						