

D & D PRODUCTION INC.

ASSEMBLY NO. 382427A-00

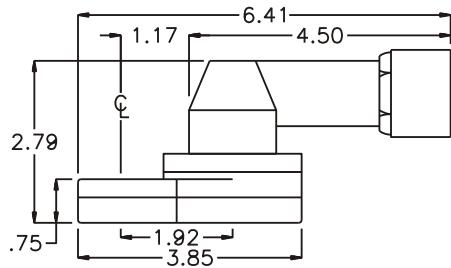
HEAD NO. 8590

TUBE NUT ASS'Y
Rev. A
02-11-00

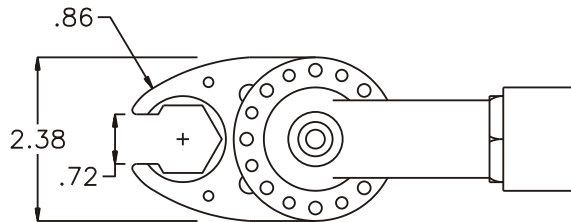
2500 WILLIAMS DRIVE • WATERFORD, MI • 48328

PHONE : (248) 334-2112 • FAX : (248) 334-0062

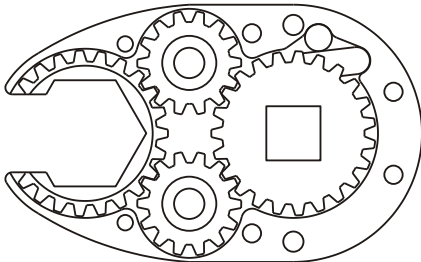
SIDE VIEW



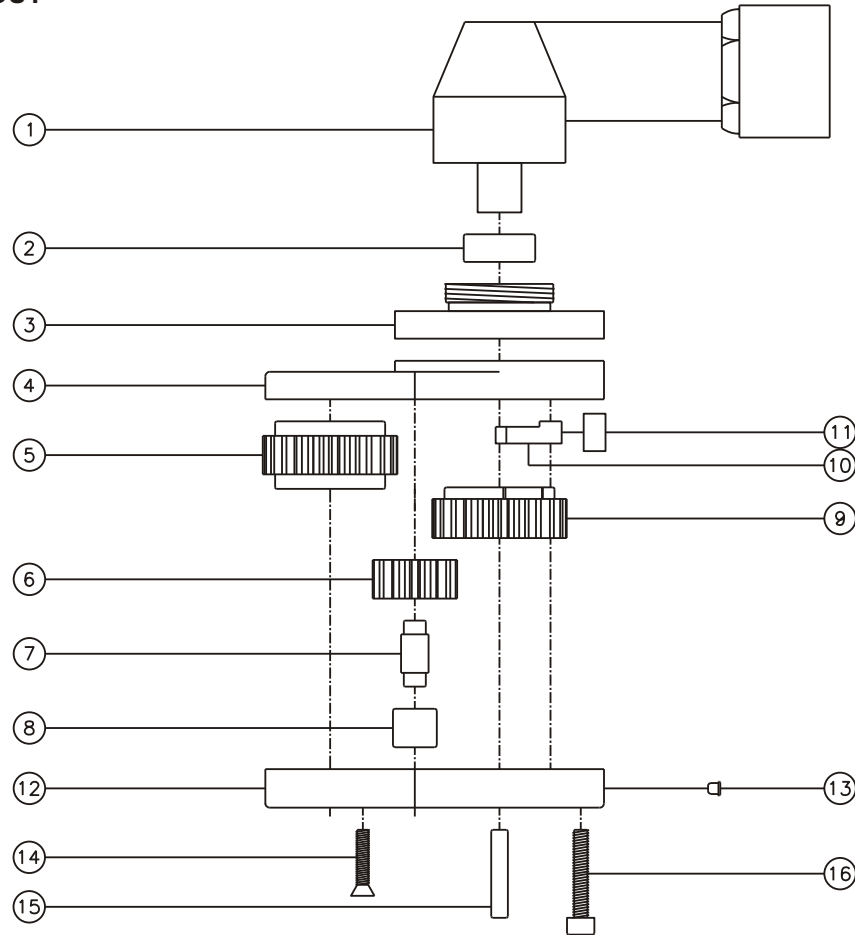
TOP VIEW



GEAR ASSEMBLY



PARTS BLOWOUT



ITEM	DESCRIPTION	PART NO.	ITEM	DESCRIPTION	PART NO.	ITEM	DESCRIPTION	PART NO.
1	Angle Head	AM4	11	Pawl Spring	RSS-0810			
2	Needle Bearing	B-105	12	Gear Housing (Bottom)	382427A-00-P			
3	Angle Head Adapter	HA-3810-AM4	13	Grease Fitting	1877			
4	Gear Housing (Top)	382427A-00-H	14	Screw #1 (2)	S-812			
5	Socket Gear	162324-1-XX	15	Dowel Pin (2)	DP-1216			
6	Idler Gear (2)	161414	16	Screw #2 (4)	S-1016SH			
7	Idler Pin (2)	IP-5724						
8	Needle Bearing (2)	B-57						
9	Drive Cam Gear	162318-SDC						
10	Pawl	1004-RPS-P						