



D & D PRODUCTION INC.®

# ASSEMBLY NO. 382027A-0

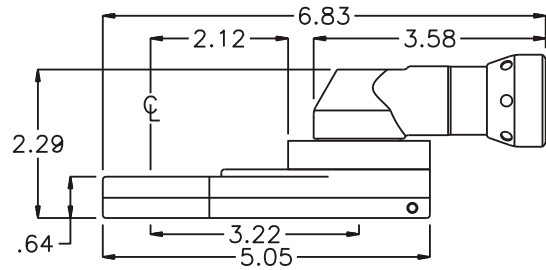
## HEAD NO. 8587

TUBE NUT ASS'Y  
Rev. A  
11-21-03

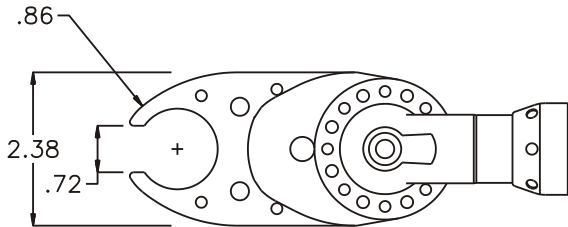
2500 WILLIAMS DRIVE • WATERFORD, MI • 48328

PHONE : (248) 334-2112 • FAX : (248) 334-0062

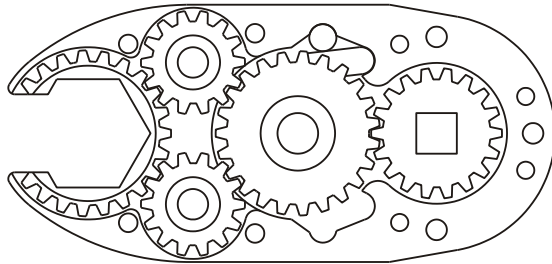
### SIDE VIEW



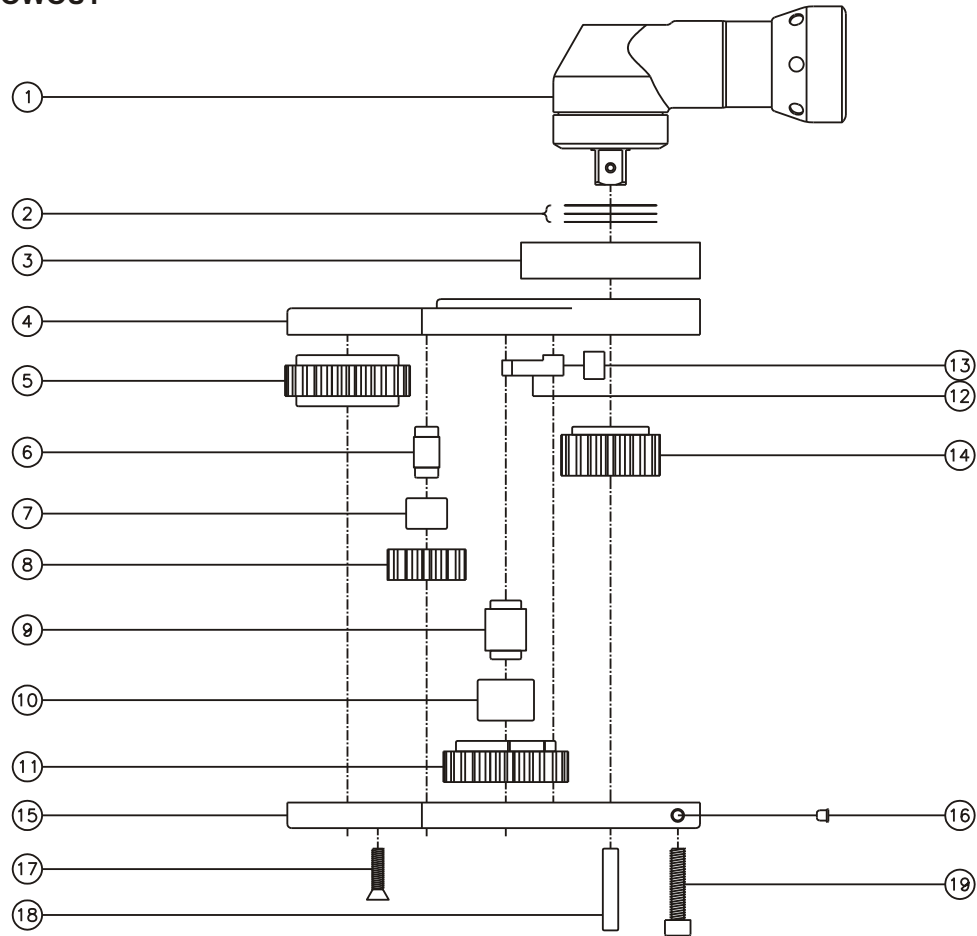
### TOP VIEW



### GEAR ASSEMBLY



### PARTS BLOWOUT



ITEM	DESCRIPTION	PART NO.	ITEM	DESCRIPTION	PART NO.	ITEM	DESCRIPTION	PART NO.
1	Angle Head	A/C 10	11	Cam Gear	162316-C			
2	Shim Set (3 pcs/set)	W-3624-002	12	Pawl	1004-RPS-P			
3	Angle Head Adapter	HA-3514-10	13	Pawl Spring	RSS-0811			
4	Gear Housing (Top)	382027A-0-H	14	Drive Gear	161819-38SD			
5	Socket Gear	162320-1-XX	15	Gear Housing (Bottom)	382027A-0-P			
6	Idler Pin (2)	IP-5620	16	Grease Fitting	1877			
7	Needle Bearing (2)	B-56	17	Screw #1 (4)	S-810			
8	Idler Gear (2)	161412	18	Dowel Pin (3)	DP-1216			
9	Cam Pin	IP-8823	19	Screw #2 (4)	S-1014SH			
10	Needle Bearing	B-88						