



D & D PRODUCTION INC.®

# ASSEMBLY NO. 381827L-00

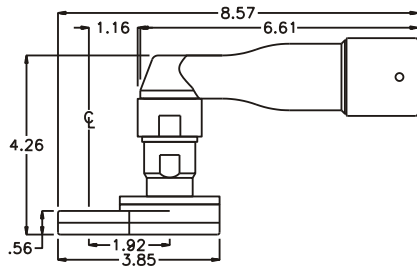
## HEAD NO. 8585

CROWFOOT ASS'Y  
Rev. A  
09-09-02

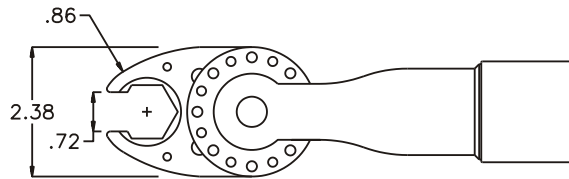
2500 WILLIAMS DRIVE • WATERFORD, MI • 48328

PHONE : (248) 334-2112 • FAX : (248) 334-0062

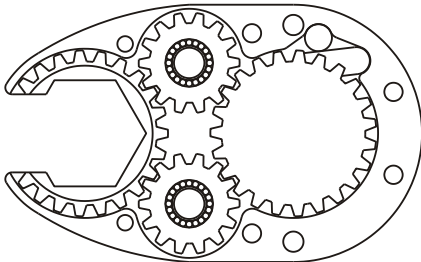
### SIDE VIEW



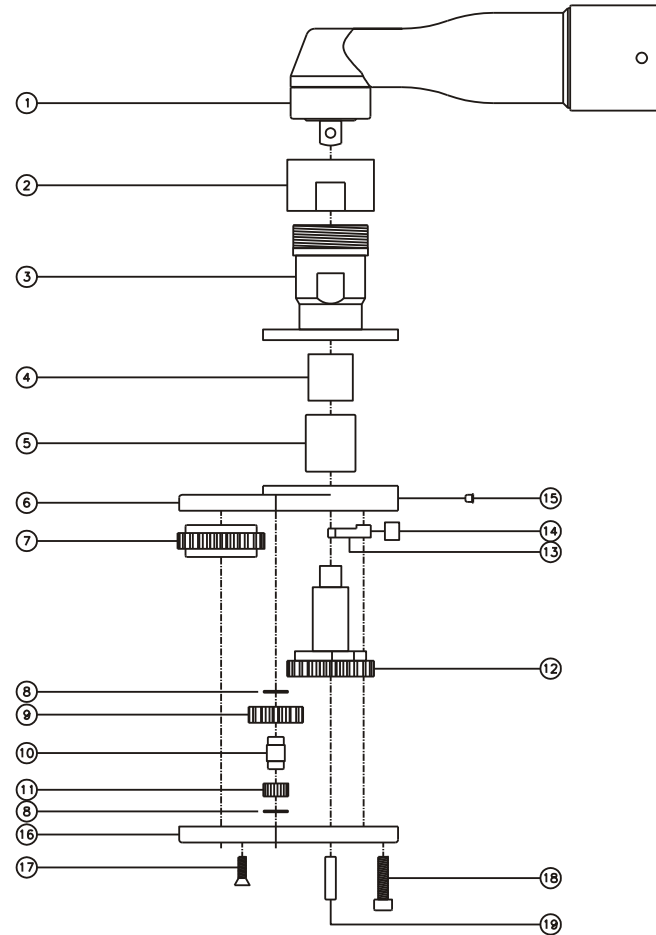
### TOP VIEW



### GEAR ASSEMBLY



### PARTS BLOWOUT



ITEM	DESCRIPTION	PART NO.	ITEM	DESCRIPTION	PART NO.	ITEM	DESCRIPTION	PART NO.
1	Angle Head	GSE 66A50	11	Bearing Needles (40)	LR15M58			
2	Adapter Nut	N-8584-66A50	12	Drive Cam Gear	162362-SDC			
3	Angle Head Adapter	HA-8565-66A50	13	Pawl	1005-RPS-P			
4	Drive Shaft	DS-062526	14	Pawl Spring	RSS-0810			
5	Needle Bearing	BH-1016	15	Grease Fitting	1877			
6	Gear Housing (Top)	381827A-00-H	16	Gear Housing (Bottom)	381827A-00-P			
7	Socket Gear	162318-1-XX	17	Screw #1 (2)	S-808			
8	Thrust Race (4)	TRA-512M	18	Screw #2 (4)	S-1012SH			
9	Idler Gear (2)	161409	19	Dowel Pin (2)	DP-1212			
10	Idler Pin (2)	IP-1018						