



D & D PRODUCTION INC.

# ASSEMBLY NO. 381827-1

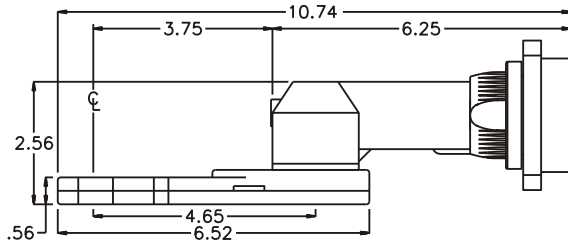
## HEAD NO. 8580

CROWFOOT ASS'Y  
Rev.B  
11-22-97

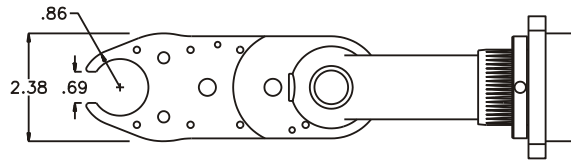
2500 WILLIAMS DRIVE • WATERFORD, MI • 48328

PHONE : (248) 334-2112 • FAX : (248) 334-0062

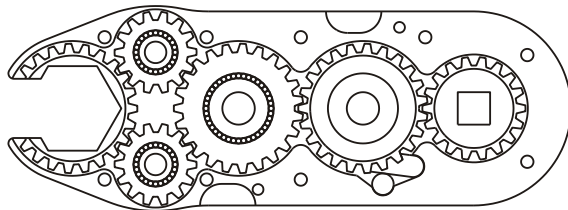
### SIDE VIEW



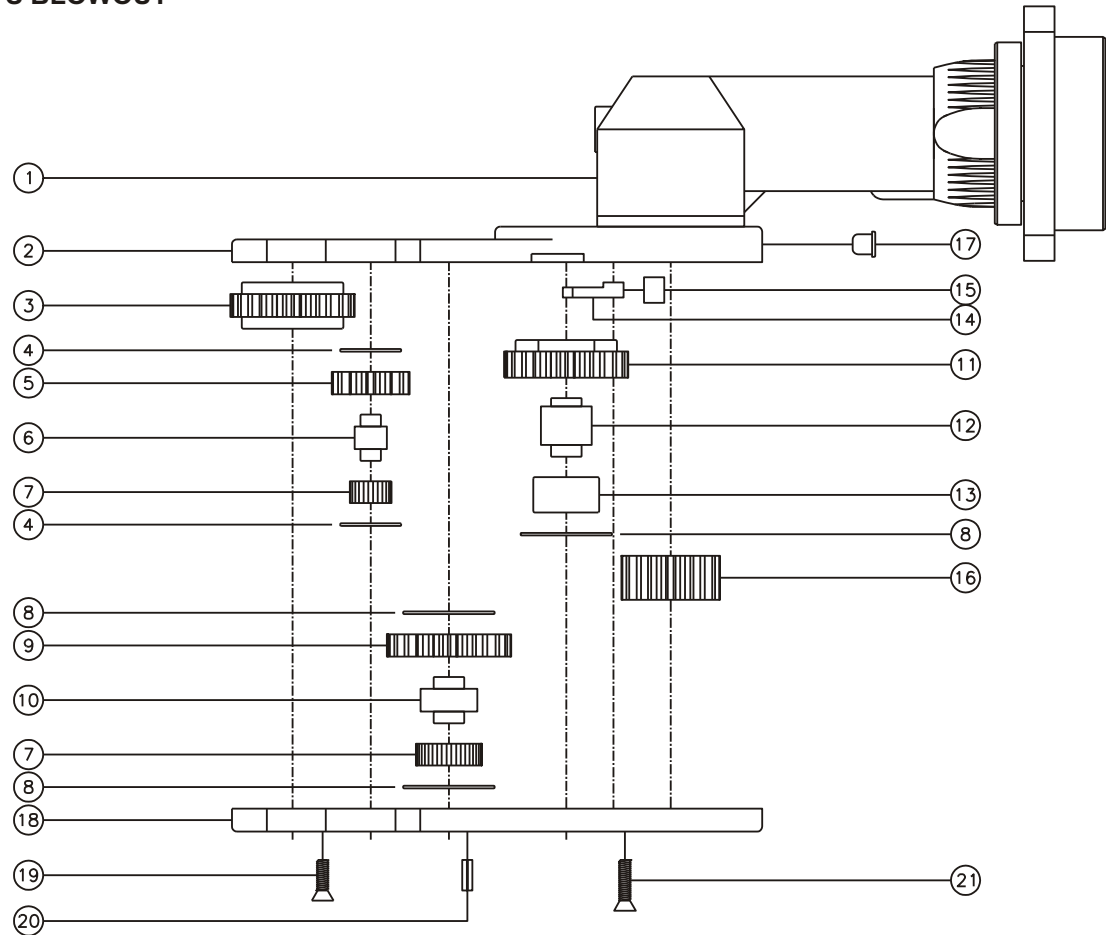
### TOP VIEW



### GEAR ASSEMBLY



### PARTS BLOWOUT



ITEM	DESCRIPTION	PART NO.	ITEM	DESCRIPTION	PART NO.	ITEM	DESCRIPTION	PART NO.
1	Angle Head	GSE 5720	11	Cam Gear	162315-C	21	Screw #2 (3)	S-810
2	Gear Housing (Top)	381827-1-H	12	Cam Pin	IP-10723			
3	Socket Gear	162318-1-XX	13	Needle Bearing	B-107			
4	Sm. Thrust Race (4)	TRA-512	14	Pawl	1004-PS-P			
5	Sm. Idler Gear (2)	161409	15	Pawl Spring	RSS-0810			
6	Sm. Idler Pin (2)	IP-1318	16	Drive Gear	161817-SD			
7	Bearing Needles (88)	LR15M68	17	Grease Fitting	1885			
8	Lg. Thrust Race (3)	TRA-1018	18	Gear Housing (Bottom)	381827-1-P			
9	Lg. Idler Gear	162309	19	Screw #1 (6)	S-808			
10	Lg. Idler Pin	IP-2218	20	Roll Pin (2)	RP-806			