



D & D PRODUCTION INC.

ASSEMBLY NO. 381432A

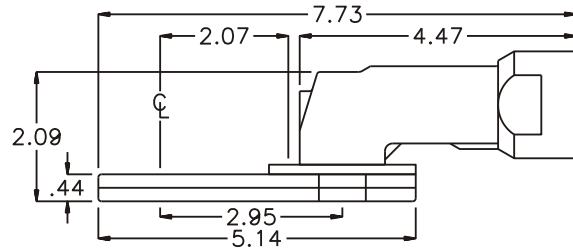
HEAD NO. 1802

CROWFOOT ASS'Y
Rev. A
09-25-01

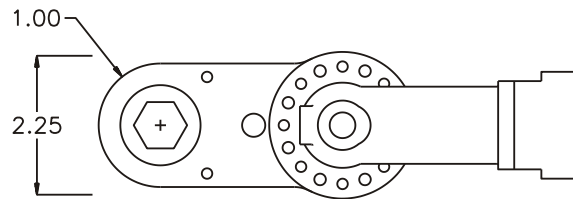
2500 WILLIAMS DRIVE • WATERFORD, MI • 48328

PHONE : (248) 334-2112 • FAX : (248) 334-0062

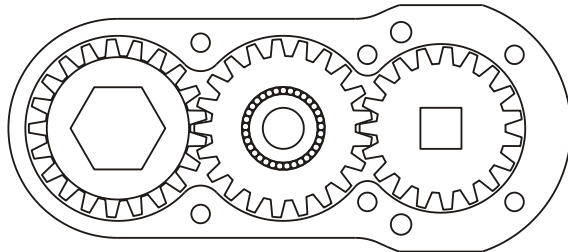
SIDE VIEW



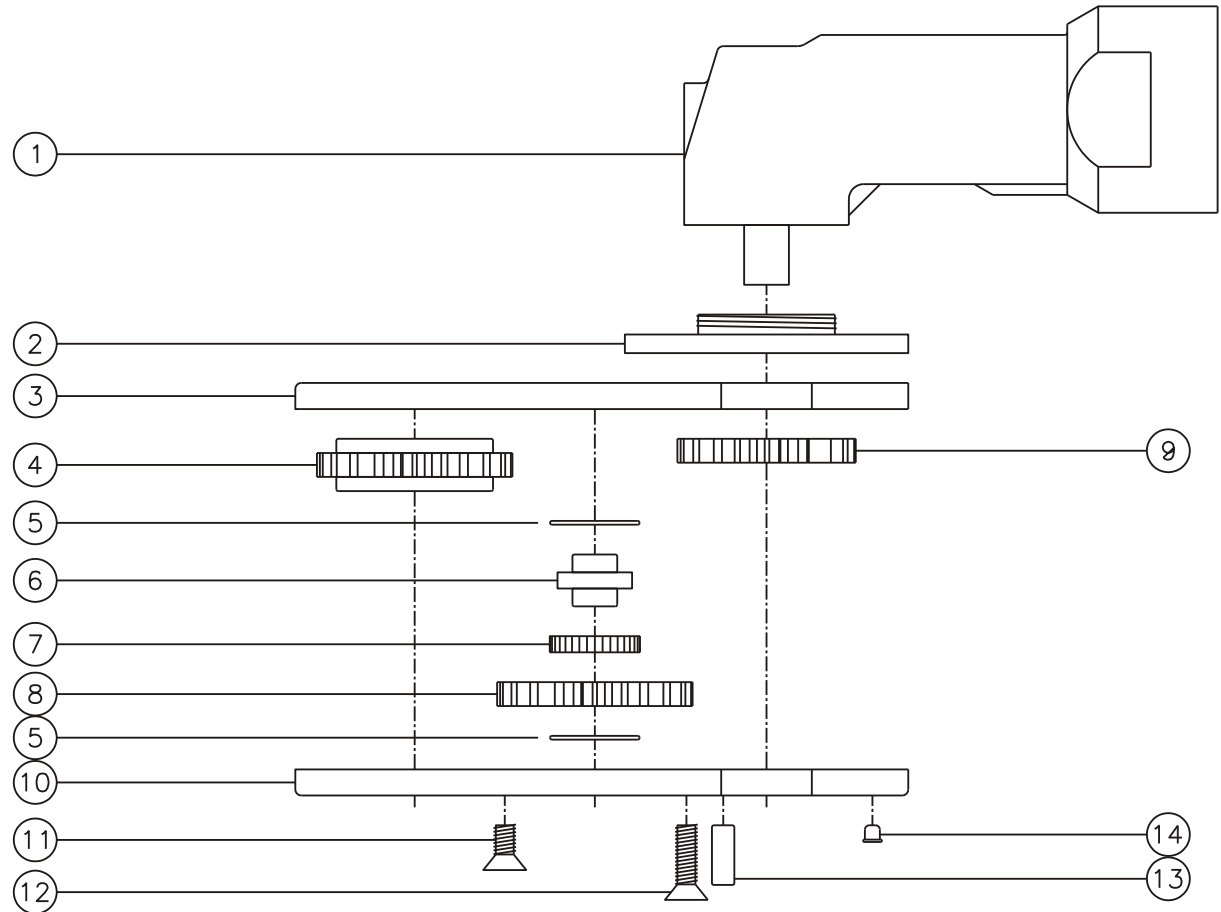
TOP VIEW



GEAR ASSEMBLY



PARTS BLOWOUT



ITEM	DESCRIPTION	PART NO.	ITEM	DESCRIPTION	PART NO.	ITEM	DESCRIPTION	PART NO.
1	Angle Head	GSE 5714	11	Screw #1 (2)	S-1006			
2	Angle Head Adapter/Bolt Hole	HA-5714-A2	12	Screw #2 (4)	S-1010			
3	Gear Housing (Top)	381432A-H	13	Dowel Pin (2)	DP-1208			
4	Socket Gear	142114-XX	14	Grease Fitting	1877			
5	Thrust Race (2)	TRA-613G						
6	Idler Pin	IP-105M14						
7	Bearing Needles (33)	LR-B105G						
8	Idler Gear	142106						
9	Drive Gear	141906-38SD						
10	Gear Housing (Bottom)	381432A-P						