

D & D PRODUCTION INC.®

ASSEMBLY NO. 381427-0

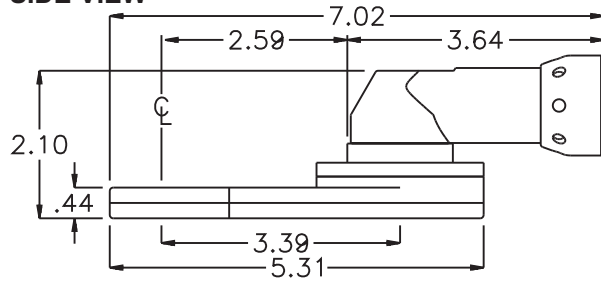
HEAD NO. 8566B

TUBENUT ASS'Y
Rev. A
01-18-11

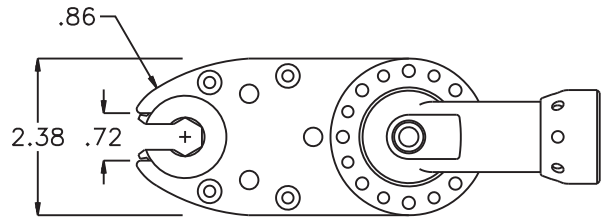
2500 WILLIAMS DRIVE • WATERFORD, MI • 48328

PHONE : (248) 334-2112 • FAX : (248) 334-0062

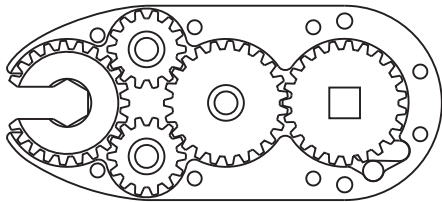
SIDE VIEW



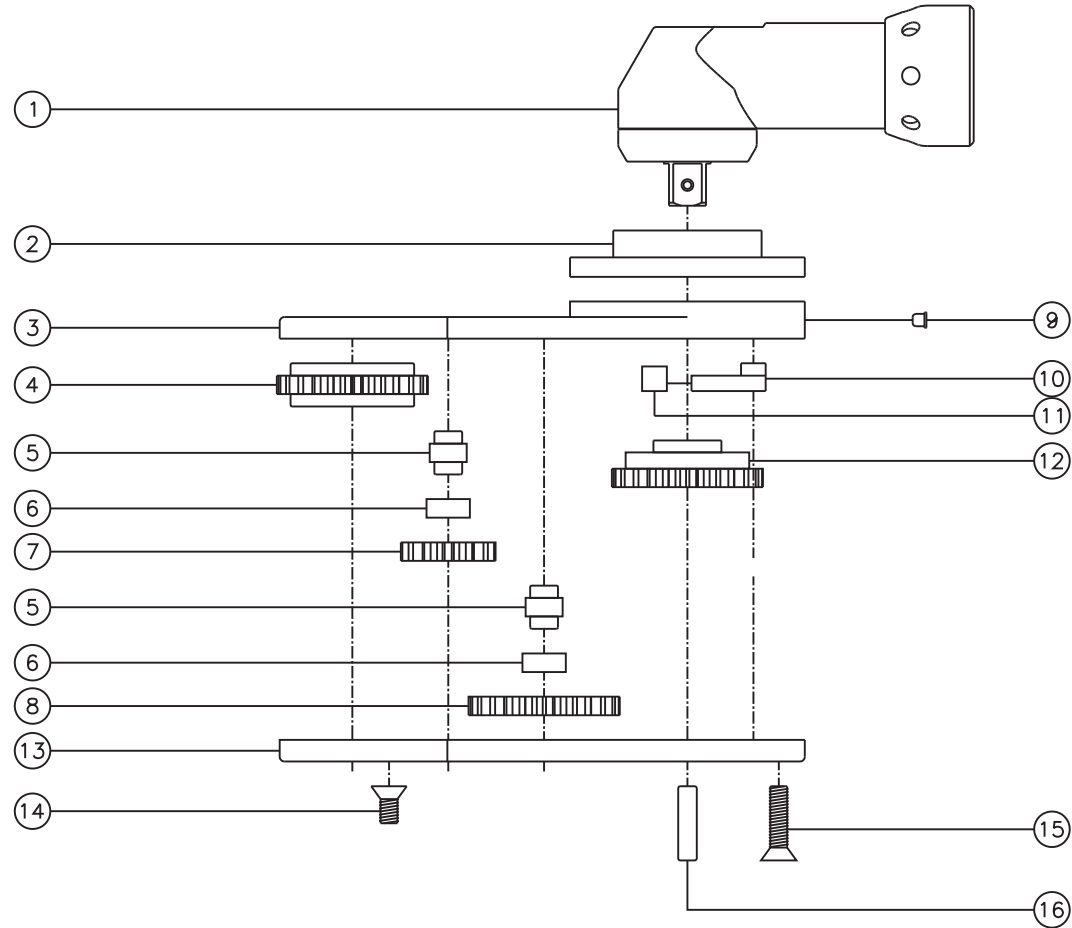
TOP VIEW



GEAR ASSEMBLY



PARTS BLOWOUT



ITEM	DESCRIPTION	PART NO.	ITEM	DESCRIPTION	PART NO.	ITEM	DESCRIPTION	PART NO.
1	Angle Head	ETV S7-50-10CTADS	11	Pawl Spring	RSS-0808			
2	Angle Head Adapter	HA-3815-10	12	Drive Gear	162315-38SDC			
3	Gear Housing (Top)	381427-0-H	13	Gear Housing (Bottom)	381427-0-P			
4	Socket Gear	162314-1-XX	14	Screw #1 (4)	S-1006			
5	Idler Pin (3)	IP-1214	15	Screw #2 (4)	S-1012			
6	Bearing (3)	B-141206	16	Dowel Pin (2)	DP-1212			
7	Sm. Idler Gear (2)	161406						
8	Lg. Idler Gear	162306						
9	Grease Fitting	1877						
10	Pawl	1005-PS-P						