



D & D PRODUCTION INC.

ASSEMBLY NO. 362024A-00

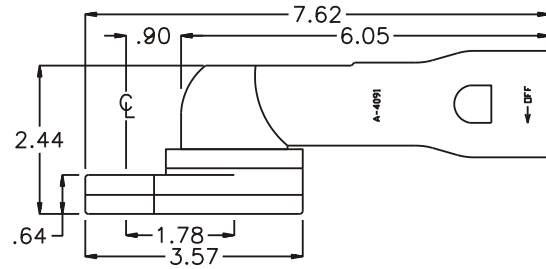
HEAD NO. 8564

CROWFOOT ASS'Y
Rev. A
09-11-00

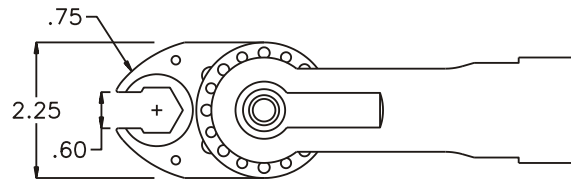
2500 WILLIAMS DRIVE • WATERFORD, MI • 48328

PHONE : (248) 334-2112 • FAX : (248) 334-0062

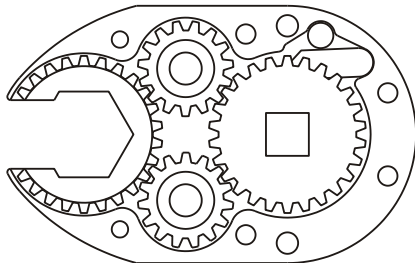
SIDE VIEW



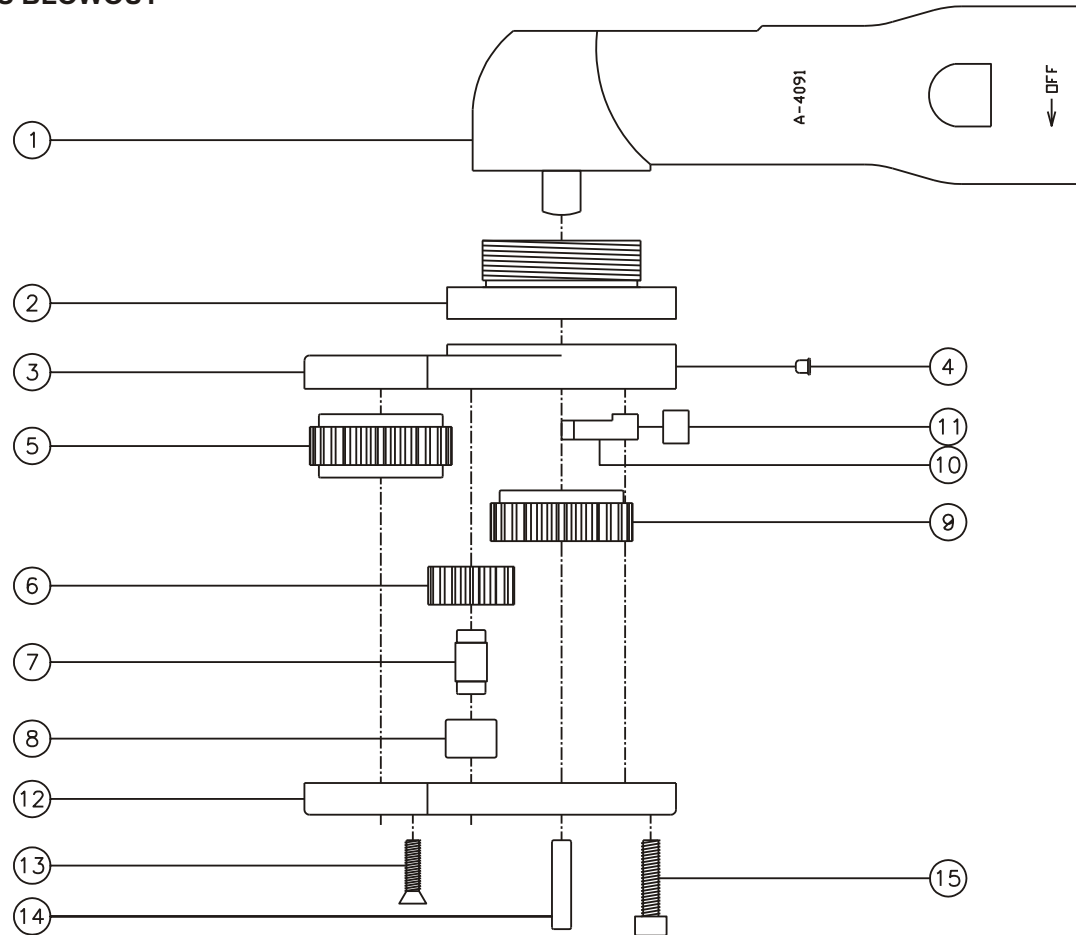
TOP VIEW



GEAR ASSEMBLY



PARTS BLOWOUT



| ITEM | DESCRIPTION | PART NO. | ITEM | DESCRIPTION | PART NO. | ITEM | DESCRIPTION | PART NO. |
|------|--------------------|--------------|------|-----------------------|--------------|------|-------------|----------|
| 1 | Angle Head | A-4091 | 11 | Pawl Spring | RSS-0810 | | | |
| 2 | Angle Head Adapter | HA-4006-S1 | 12 | Gear Housing (Bottom) | 362024A-00-P | | | |
| 3 | Gear Housing (Top) | 362024A-00-H | 13 | Screw #1 (2) | S-810 | | | |
| 4 | Grease Fitting | 1877 | 14 | Dowel Pin (2) | DP-1214 | | | |
| 5 | Socket Gear | 202620-1-XX | 15 | Screw #2 (4) | S-1012SH | | | |
| 6 | Idler Gear (2) | 201512 | | | | | | |
| 7 | Idler Pin (2) | IP-5620 | | | | | | |
| 8 | Needle Bearing (2) | B-56 | | | | | | |
| 9 | Drive Cam Gear | 202616-SDC | | | | | | |
| 10 | Pawl | 1004-RPS-P | | | | | | |