



D & D PRODUCTION INC.

ASSEMBLY NO. 362020-0

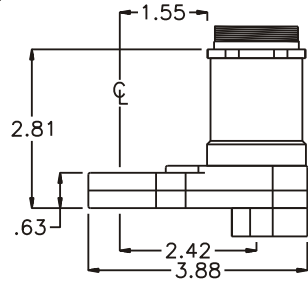
HEAD NO. 8563

CROWFOOT ASS'Y
Rev. A
07-06-00

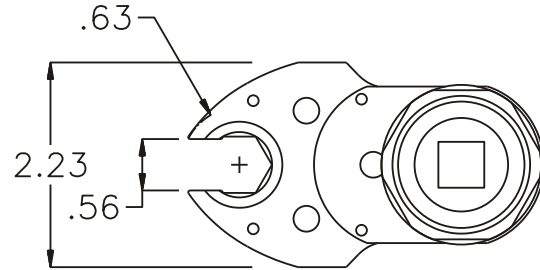
2500 WILLIAMS DRIVE • WATERFORD, MI • 48328

PHONE : (248) 334-2112 • FAX : (248) 334-0062

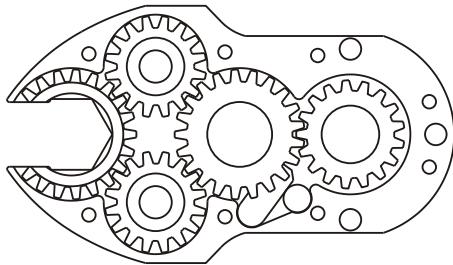
SIDE VIEW



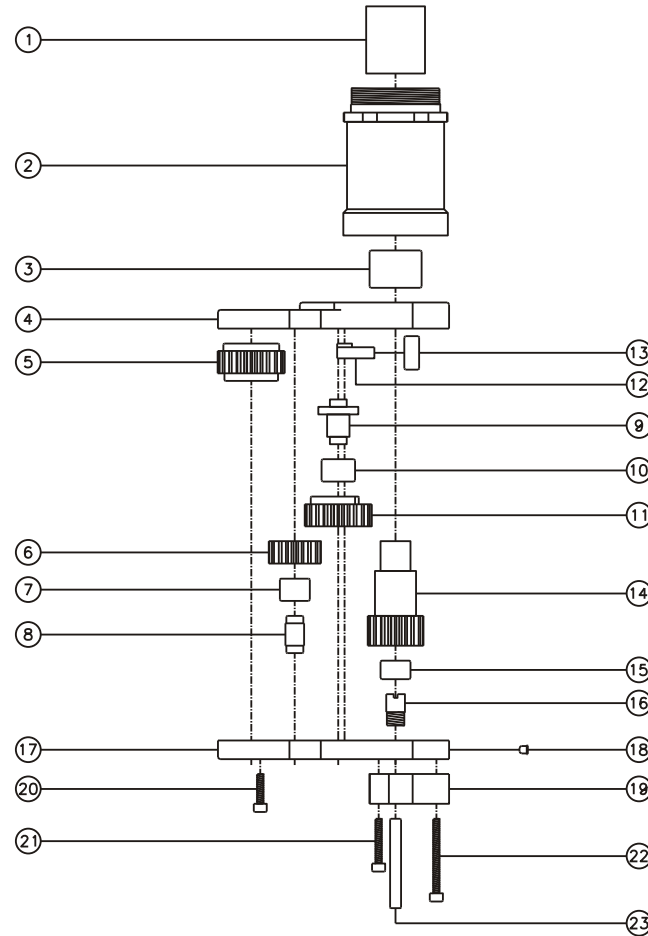
TOP VIEW



GEAR ASSEMBLY



PARTS BLOWOUT



ITEM	DESCRIPTION	PART NO.	ITEM	DESCRIPTION	PART NO.	ITEM	DESCRIPTION	PART NO.
1	Drive Coupling	DS-122036	11	Cam Gear	202116-C	21	Screw #2 (2)	S-612SH
2	Angle Head Adapter	HA-2878-5714	12	Pawl	0806-RPS-P	22	Screw #3 (2)	S-620SH
3	Needle Bearing	B-1110	13	Pawl Spring	RSS-0818	23	Dowel Pin (3)	DP-1224
4	Gear Housing (Top)	362020-0-H	14	Drive Gear	201756-SD			
5	Socket Gear	202120-1-XX	15	Needle Bearing	B-55			
6	Idler Gear (2)	201612	16	Drive Gear Pin	TP-5517			
7	Needle Bearing (2)	B-56	17	Gear Housing (Bottom)	362020-0-P			
8	Idler Pin (2)	IP-5620	18	Grease Fitting	1877			
9	Cam Pin	IP-6624	19	Reaction Block	RB1AS			
10	Needle Bearing	B-66	20	Screw #1 (4)	S-608SH			