



D & D PRODUCTION INC.®

# ASSEMBLY NO. 352620FL-00

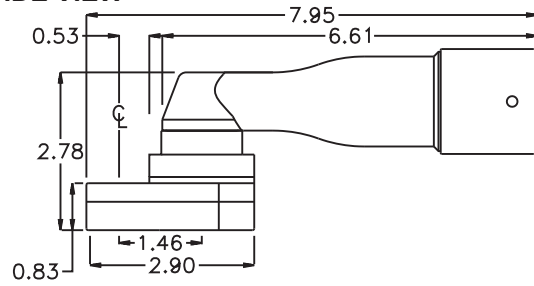
## HEAD NO. 8577B

TUBENUT ASS'Y  
Rev. A  
01-12-10

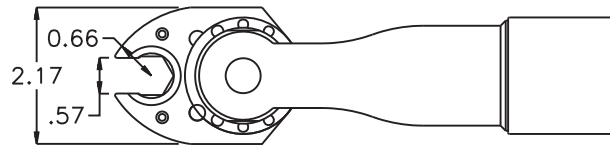
2500 WILLIAMS DRIVE • WATERFORD, MI • 48328

PHONE : (248) 334-2112 • FAX : (248) 334-0062

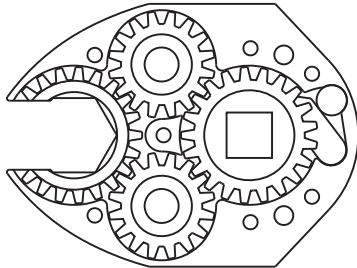
### SIDE VIEW



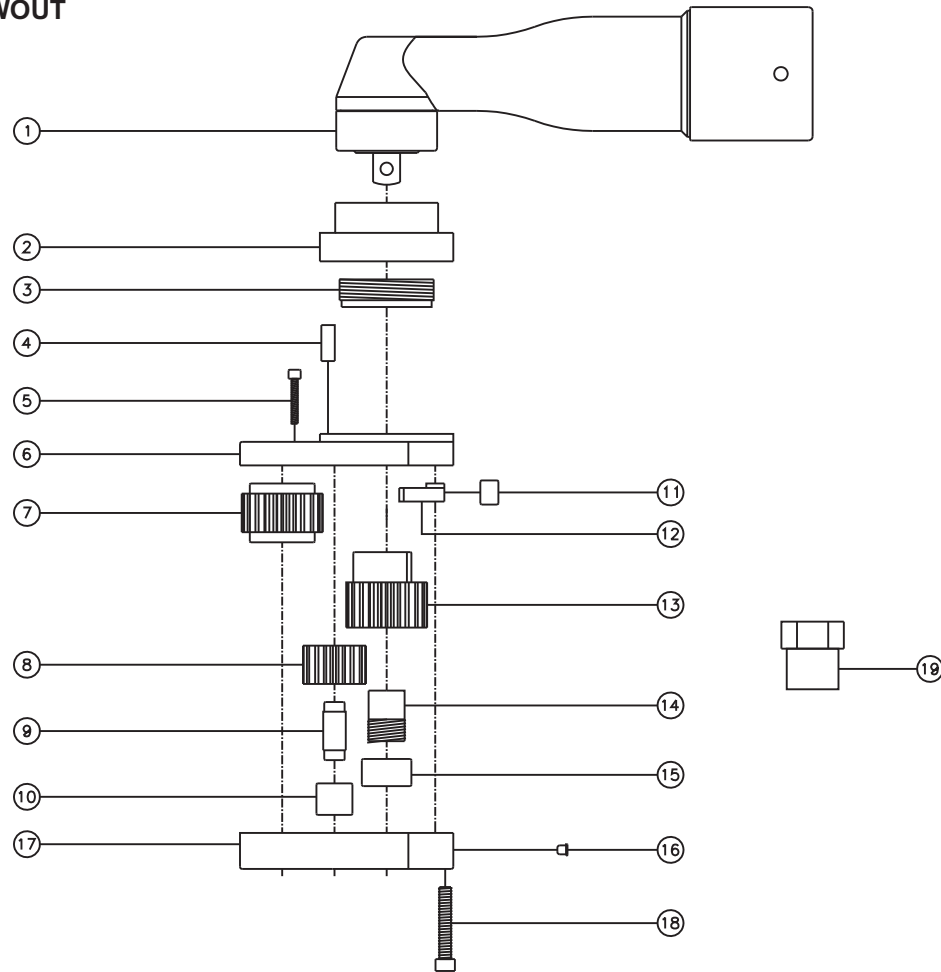
### TOP VIEW



### GEAR ASSEMBLY



### PARTS BLOWOUT



ITEM	DESCRIPTION	PART NO.	ITEM	DESCRIPTION	PART NO.	ITEM	DESCRIPTION	PART NO.
1	Motor	GSE 66A50	11	Pawl Spring	RSS-0811			
2	Angle Head Adapter	HAF-2909-A50	12	Pawl	0806-RPS-P			
3	Adapter Nut	N-2433B-66A50	13	Drive Cam Gear	202132-38SDC			
4	Dowel Pin (3)	DP-1208	14	Drive Gear Pin	TP-8623			
5	Screw #1 (2)	S-410SH	15	Needle Bearing	B-86			
6	Gear Housing (Top)	352620FL-00-H	16	Gear Housing (Bottom)	352620FL-00-P			
7	Socket Gear	202126-1-XX	17	Grease Fitting	1877			
8	Idler Gear (2)	201617	18	Screw #2 (4)	S-820SH			
9	Idler Pin (2)	IP-5726	19	Adapter Nut Socket (Optional)	ENT-24M38SD			
10	Needle Bearing (2)	B-57						