



D & D PRODUCTION INC.

# ASSEMBLY NO. 352020F-00

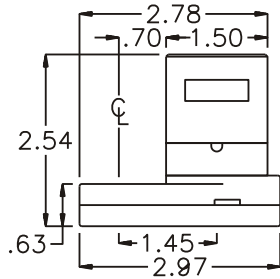
## HEAD NO. 8569

CROWFOOT ASS'Y  
Rev. A  
05-30-02

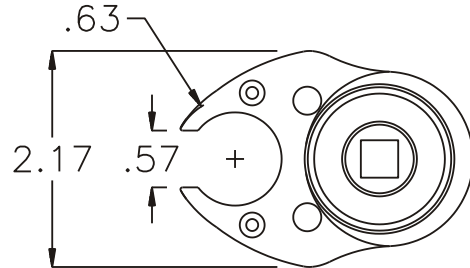
2500 WILLIAMS DRIVE • WATERFORD, MI • 48328

PHONE : (248) 334-2112 • FAX : (248) 334-0062

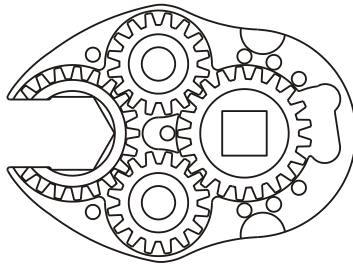
### SIDE VIEW



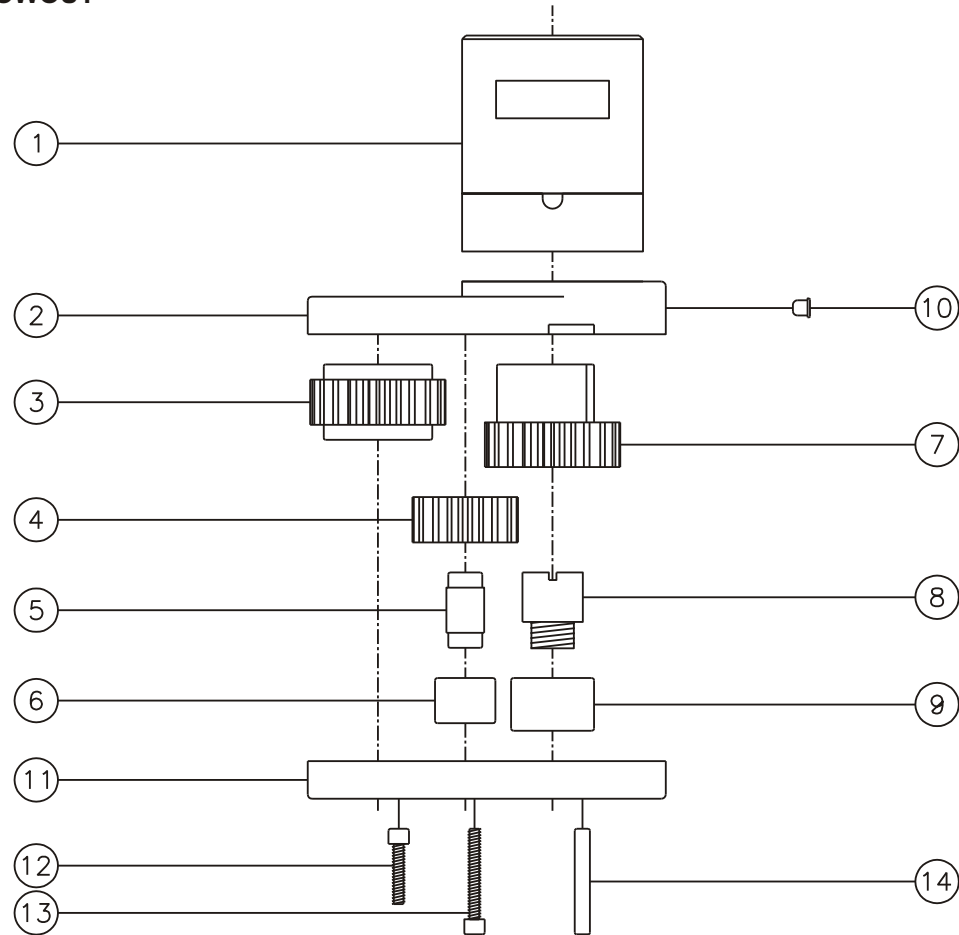
### TOP VIEW



### GEAR ASSEMBLY



### PARTS BLOWOUT



| ITEM | DESCRIPTION        | PART NO.     | ITEM | DESCRIPTION           | PART NO.     | ITEM | DESCRIPTION | PART NO. |
|------|--------------------|--------------|------|-----------------------|--------------|------|-------------|----------|
| 1    | Clutch             | CTA-10A-10X  | 11   | Gear Housing (Bottom) | 352020F-00-P |      |             |          |
| 2    | Gear Housing (Top) | 352020F-00-H | 12   | Screw #1 (2)          | S-408SH      |      |             |          |
| 3    | Socket Gear        | 202120-1-XX  | 13   | Screw #2 (5)          | S-412SH      |      |             |          |
| 4    | Idler Gear (2)     | 201612       | 14   | Dowel Pin (2)         | DP-814       |      |             |          |
| 5    | Idler Pin (2)      | IP-5620      |      |                       |              |      |             |          |
| 6    | Needle Bearing (2) | B-56         |      |                       |              |      |             |          |
| 7    | Drive Cam Gear     | 202127-SDC   |      |                       |              |      |             |          |
| 8    | Drive Gear Pin     | TP-8720      |      |                       |              |      |             |          |
| 9    | Needle Bearing     | B-87         |      |                       |              |      |             |          |
| 10   | Grease Fitting     | 1877         |      |                       |              |      |             |          |