



D & D PRODUCTION INC.

# ASSEMBLY NO. 351820-1

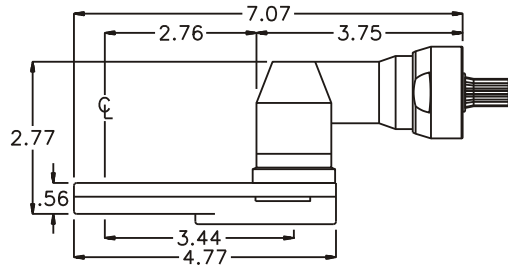
## HEAD NO. 8554

CROWFOOT ASS'Y  
Rev. A  
01-13-95

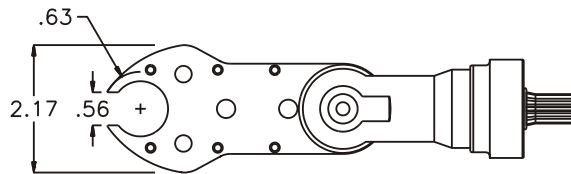
2500 WILLIAMS DRIVE • WATERFORD, MI • 48328

PHONE : (248) 334-2112 • FAX : (248) 334-0062

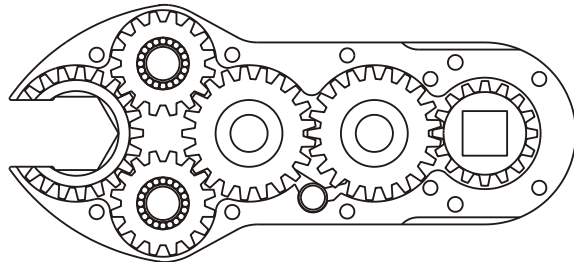
### SIDE VIEW



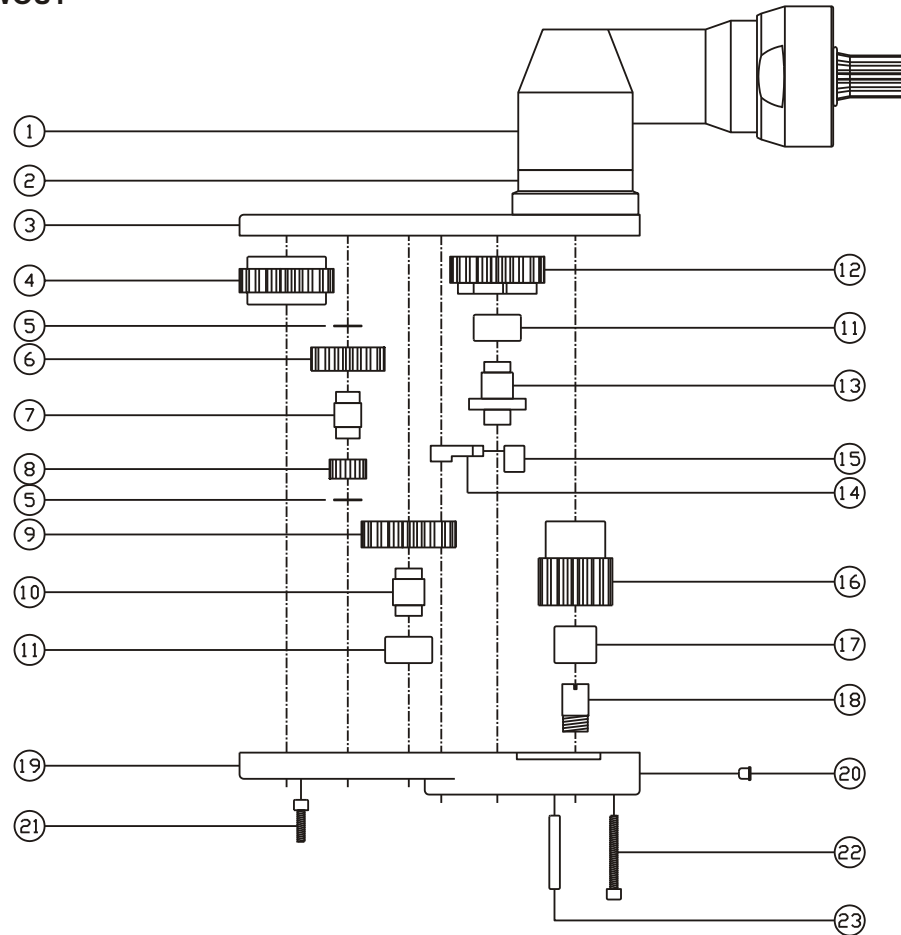
### TOP VIEW



### GEAR ASSEMBLY



### PARTS BLOWOUT



ITEM	DESCRIPTION	PART NO.	ITEM	DESCRIPTION	PART NO.	ITEM	DESCRIPTION	PART NO.
1	Angle Head	32	11	Needle Bearing (2)	B-65	21	Screw #1 (6)	S-406SH
2	Angle Head Adapter	HA 8554	12	Cam Gear	202114-C	22	Screw #2 (4)	S-414SH
3	Gear Housing (Top)	351820-1-H	13	Cam Pin	IP-1118	23	Dowel Pin (2)	DP-814
4	Socket Gear	202118-1-XX	14	Pawl	8554-P			
5	Thrust Race (4)	W-1682-010	15	Pawl Spring	RS-0810			
6	Sm. Idler Gear (2)	201609-B	16	Drive Gear	201632-SD			
7	Sm. Idler Pin (2)	IP-1018	17	Needle Bearing	B-57			
8	Bearing Needles (40)	LR15M58	18	Drive Pin	TP-5718			
9	Lg. Idler Gear	202110	19	Gear Housing (Bottom)	351820-1-P			
10	Lg. Idler Pin	IP-6518	20	Grease Fitting	1877			