



D & D PRODUCTION INC.

ASSEMBLY NO. 323232-3

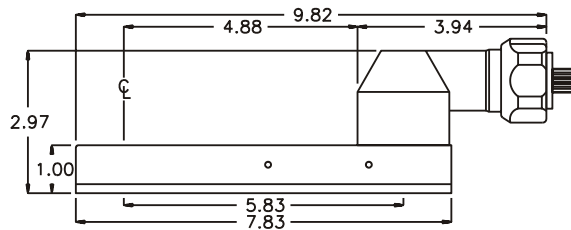
HEAD NO. 3650

CROWFOOT ASS'Y
Rev. E
01-21-93

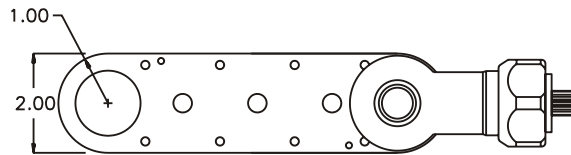
2500 WILLIAMS DRIVE • WATERFORD, MI • 48328

PHONE : (248) 334-2112 • FAX : (248) 334-0062

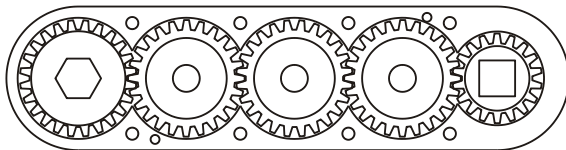
SIDE VIEW



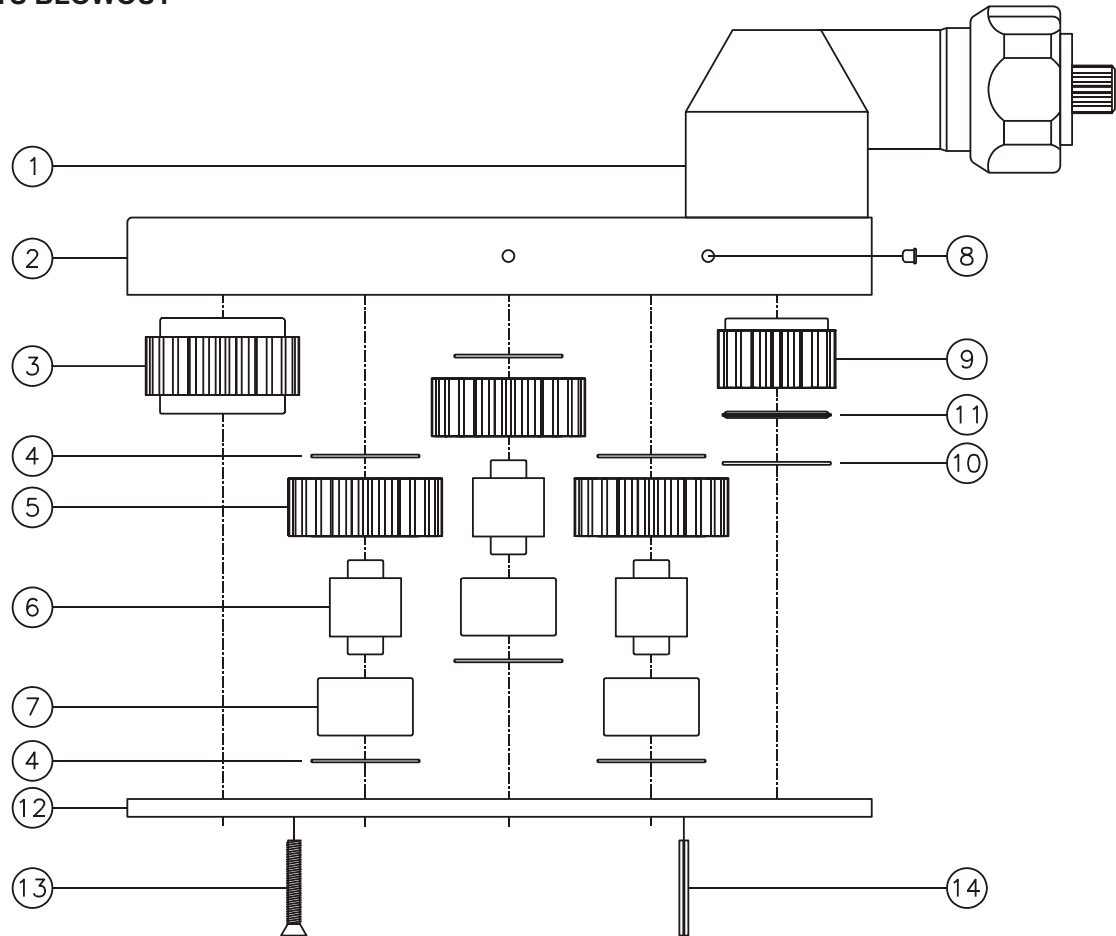
TOP VIEW



GEAR ASSEMBLY



PARTS BLOWOUT



| ITEM | DESCRIPTION | PART NO. | ITEM | DESCRIPTION | PART NO. | ITEM | DESCRIPTION | PART NO. |
|------|--------------------|------------|------|----------------|------------|------|-------------|----------|
| 1 | Angle Head | 83 | 11 | Thrust Bearing | NTA-815 | | | |
| 2 | Gear Housing | 323232-3-H | 12 | Bottom Plate | 323232-3-P | | | |
| 3 | Socket Gear | 162432-XX | 13 | Screw (8) | S-816 | | | |
| 4 | Thrust Race (6) | TRA-1018 | 14 | Roll Pin (2) | RP-816 | | | |
| 5 | Idler Gear (3) | 162420 | | | | | | |
| 6 | Idler Pin (3) | IP-121032 | | | | | | |
| 7 | Needle Bearing (3) | B-1210 | | | | | | |
| 8 | Grease Fitting (2) | 1877 | | | | | | |
| 9 | Drive Gear | 161820-SD | | | | | | |
| 10 | Thrust Race | TRA-815 | | | | | | |