

D & D PRODUCTION INC.®

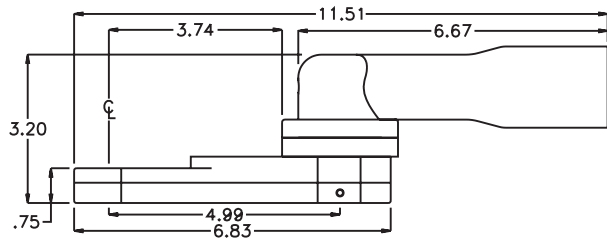
# ASSEMBLY NO. 322424A-3

## HEAD NO. 1606

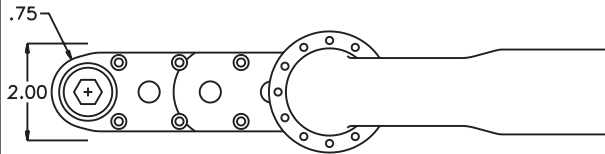
CROWFOOT ASS'Y  
Rev. A  
01-16-07

2500 WILLIAMS DRIVE • WATERFORD, MI • 48328 PHONE : (248) 334-2112 • FAX : (248) 334-0062

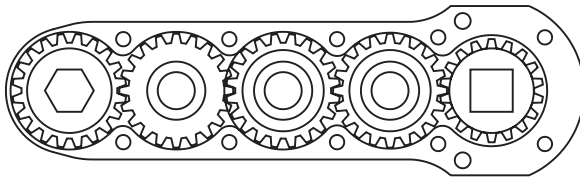
### SIDE VIEW



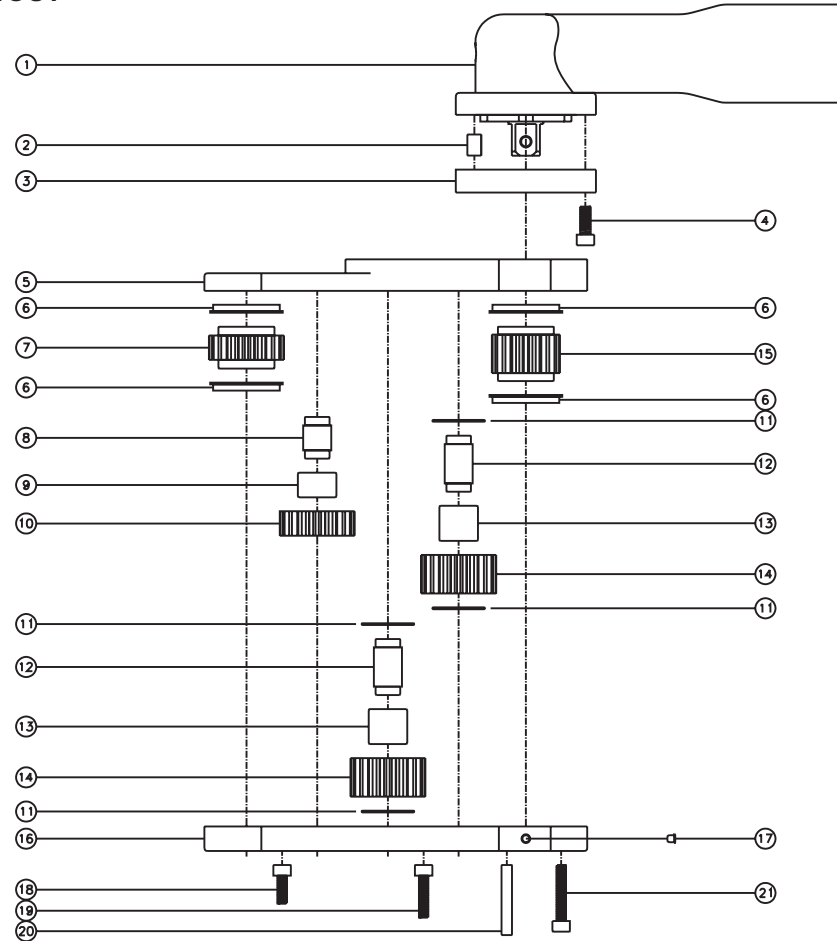
### TOP VIEW



### GEAR ASSEMBLY



### PARTS BLOWOUT



ITEM	DESCRIPTION	PART NO.	ITEM	DESCRIPTION	PART NO.	ITEM	DESCRIPTION	PART NO.
1	Angle Head	Techmotive 90Nm Flanged	11	Thrust Race (4)	TRA-815	21	Screw #4 (4)	S-1016SH
2	Dowel Pin #1 (3)	DP-1606	12	Lg. Idler Pin (2)	IP-81032	22		
3	Adapter	FA90-4013	13	Needle Bearing (2)	B-810	23		
4	Screw #1 (5)	S-1008SHC	14	Lg. Idler Gear (2)	162022B	24		
5	Gear Housing (Top)	322424A-3-H	15	Drive Gear	161831-12SD	25		
6	Bushing (4)	A-6409B	16	Gear Housing (Bottom)	322424A-3-P	26		
7	Socket Gear	162024-XX	17	Grease Fitting	1877	27		
8	Sm. Idler Pin	IP-8724B	18	Screw #2 (4)	S-1008SH	28		
9	Needle Bearing	B-87	19	Screw #3 (2)	S-1012SH	29		
10	Sm. Idler Gear	162014	20	Dowel Pin #2 (2)	DP-1220	30		