



D & D PRODUCTION INC.®

ASSEMBLY NO. 322424A

HEAD NO. 1586

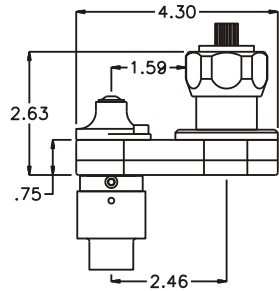
FOR INGERSOLL RAND 9RSQ83 MOTOR

CROWFOOT ASS'Y
Rev. A
04-29-03

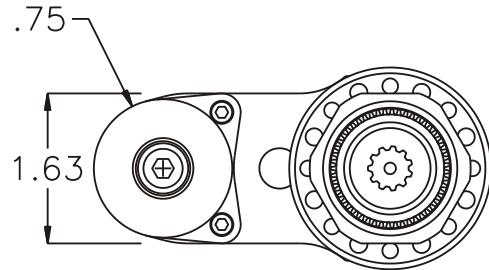
2500 WILLIAMS DRIVE • WATERFORD, MI • 48328

PHONE : (248) 334-2112 • FAX : (248) 334-0062

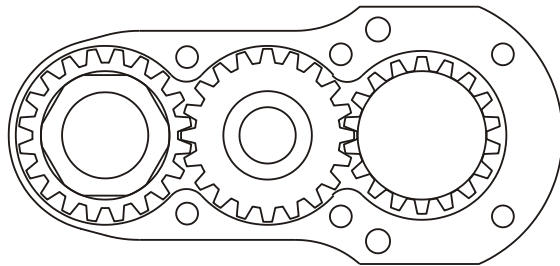
SIDE VIEW



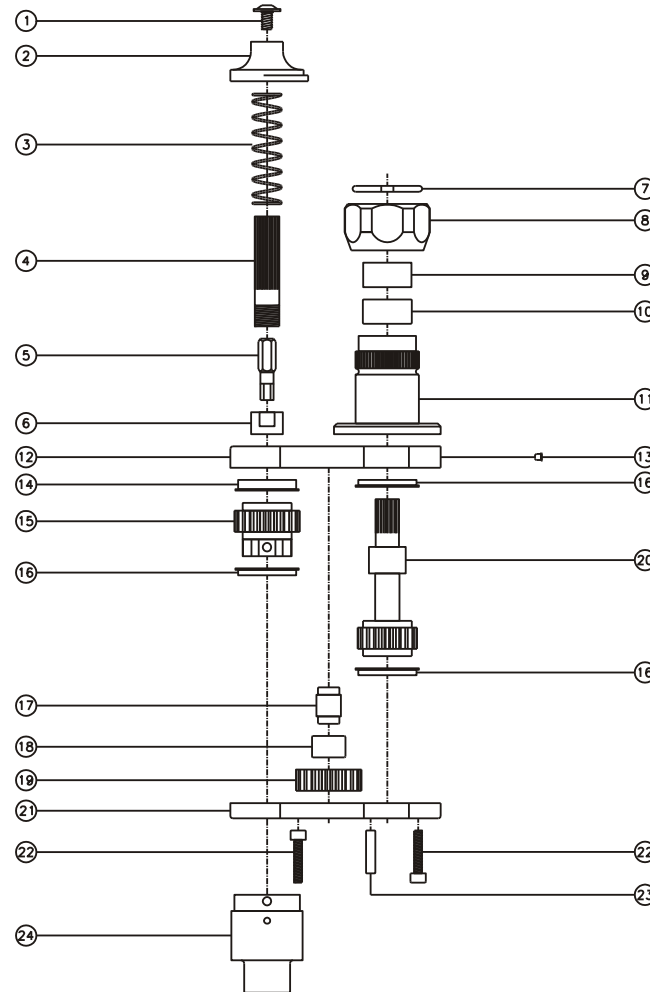
TOP VIEW



GEAR ASSEMBLY



PARTS BLOWOUT



ITEM	DESCRIPTION	PART NO.	ITEM	DESCRIPTION	PART NO.	ITEM	DESCRIPTION	PART NO.
1	Screw	S-1406FLB	11	Adapter	HA-3507-83	21	Gear Housing (Bottom)	322424A-P
2	Cap	HC-1688	12	Gear Housing (Top)	322424A-H	22	Screw (6)	S-1012SH
3	Spring	C-045H-09	13	Grease Fitting	1877	23	Dowel Pin (2)	DP-1214
4	Hold Spindle	HS-1688-08	14	Bushing	A-6414B	24	Socket Assembly	HDS-12MM1.25-A
5	6mm Hex Bit	HB-08M52M20	15	Socket Gear	162024-30M-E5.5-A			
6	Nut	N-1688	16	Bushing (3)	A-6409B			
7	Circlip	R5713-C	17	Idler Pin	IP-8724B			
8	Motor Nut	N-83	18	Needle Bearing	B-87			
9	Sleeve	SL-5032	19	Idler Gear	162014			
10	Needle Bearing	B-128	20	Drive Gear	1618103-S			