



D & D PRODUCTION INC.®

ASSEMBLY NO. 322424A

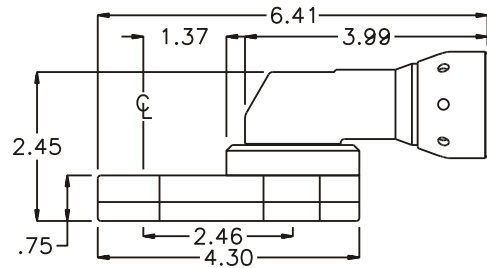
HEAD NO. 1585

CROWFOOT ASS'Y
Rev. A
03-25-03

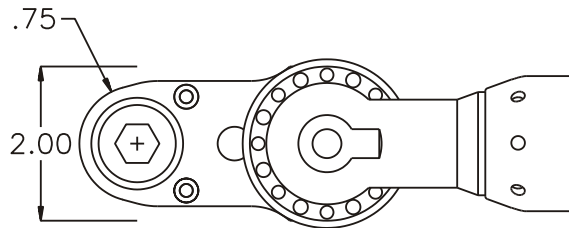
2500 WILLIAMS DRIVE • WATERFORD, MI • 48328

PHONE : (248) 334-2112 • FAX : (248) 334-0062

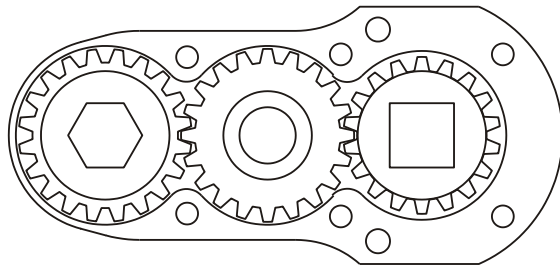
SIDE VIEW



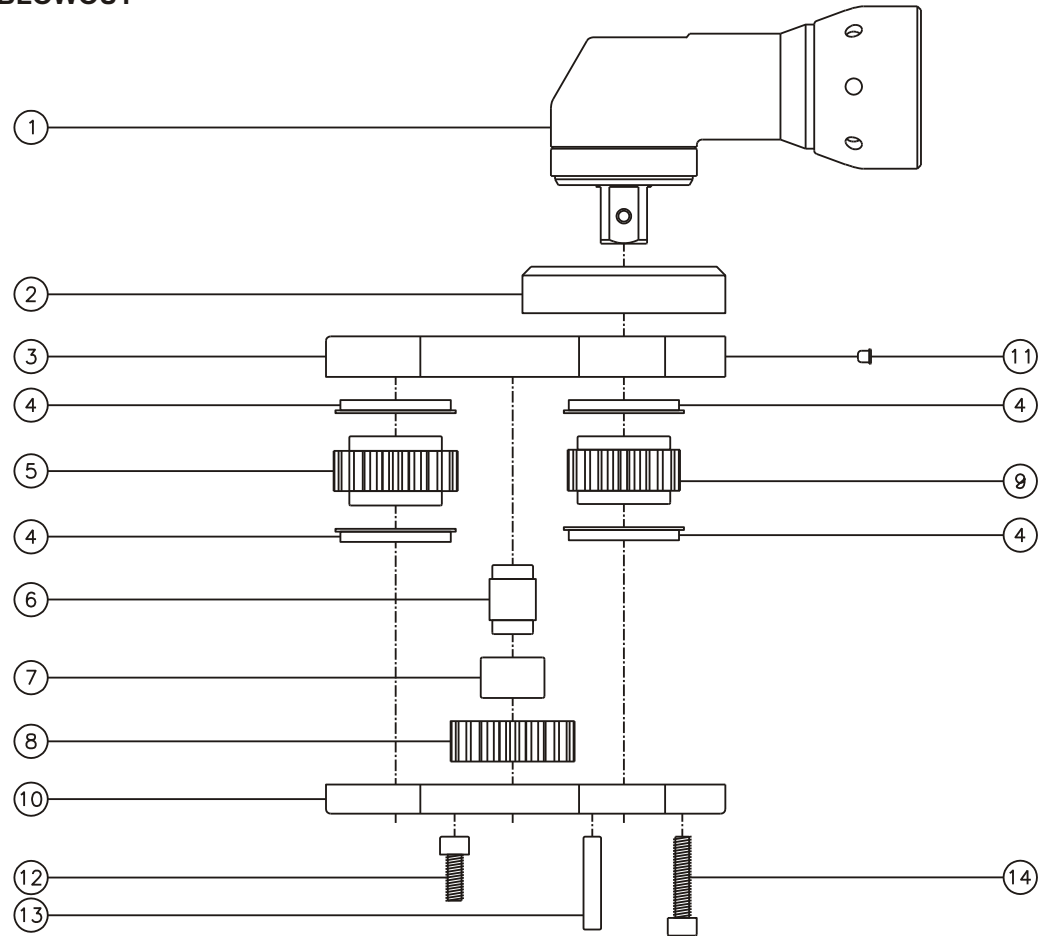
TOP VIEW



GEAR ASSEMBLY



PARTS BLOWOUT



| ITEM | DESCRIPTION | PART NO. | ITEM | DESCRIPTION | PART NO. | ITEM | DESCRIPTION | PART NO. |
|------|-----------------------|-------------|------|----------------|----------|------|-------------|----------|
| 1 | Angle Head | A/C #13 | 11 | Grease Fitting | 1877 | | | |
| 2 | Angle Head Adapter | HA-3516-10X | 12 | Screw #1 (2) | S-1008SH | | | |
| 3 | Gear Housing (Top) | 322424A-H | 13 | Dowel Pin (2) | DP-1216 | | | |
| 4 | Bushing (4) | A-6409B | 14 | Screw #2 (4) | S-1014SH | | | |
| 5 | Socket Gear | 162024-XX | | | | | | |
| 6 | Idler Pin | IP-8724B | | | | | | |
| 7 | Needle Bearing | B-87 | | | | | | |
| 8 | Idler Gear | 162014 | | | | | | |
| 9 | Drive Gear | 161823-12SD | | | | | | |
| 10 | Gear Housing (Bottom) | 322424A-P | | | | | | |