



D & D PRODUCTION INC.

ASSEMBLY NO. 322421

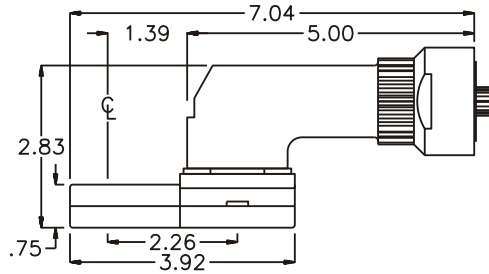
HEAD NO. 1580

CROWFOOT ASS'Y
Rev. A
12-21-94

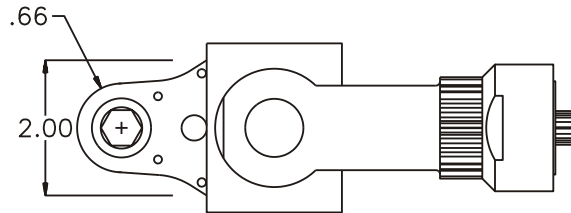
2500 WILLIAMS DRIVE • WATERFORD, MI • 48328

PHONE : (248) 334-2112 • FAX : (248) 334-0062

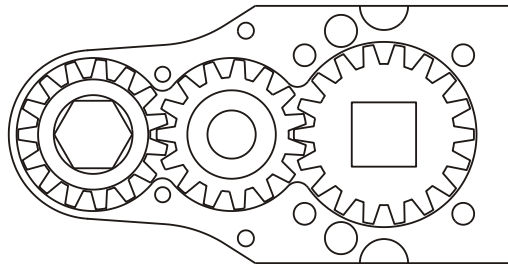
SIDE VIEW



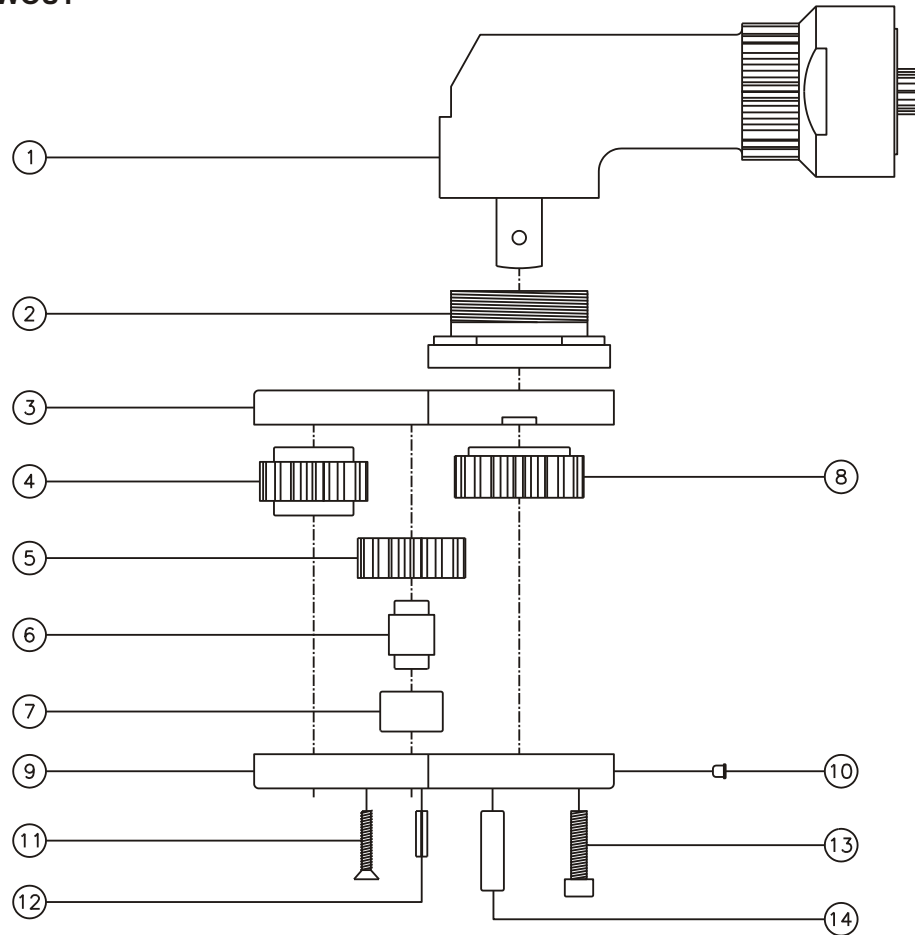
TOP VIEW



GEAR ASSEMBLY



PARTS BLOWOUT



| ITEM | DESCRIPTION | PART NO. | ITEM | DESCRIPTION | PART NO. | ITEM | DESCRIPTION | PART NO. |
|------|-----------------------|-----------|------|---------------|----------|------|-------------|----------|
| 1 | Angle Head | RA-13 | 11 | Screw #1 (2) | S-612 | | | |
| 2 | Mounting Bracket | MB-1580 | 12 | Roll Pin (2) | RP-808 | | | |
| 3 | Gear Housing (Top) | 322421-H | 13 | Screw #2 (4) | S-1012SH | | | |
| 4 | Socket Gear | 141524-XX | 14 | Dowel Pin (2) | DP-1614 | | | |
| 5 | Idler Gear | 141514 | | | | | | |
| 6 | Idler Pin | IP-8724 | | | | | | |
| 7 | Needle Bearing | B-87 | | | | | | |
| 8 | Drive Gear | 141818-SD | | | | | | |
| 9 | Gear Housing (Bottom) | 322421-P | | | | | | |
| 10 | Grease Fitting | 1877 | | | | | | |