



D & D PRODUCTION INC.

ASSEMBLY NO. 321824-1

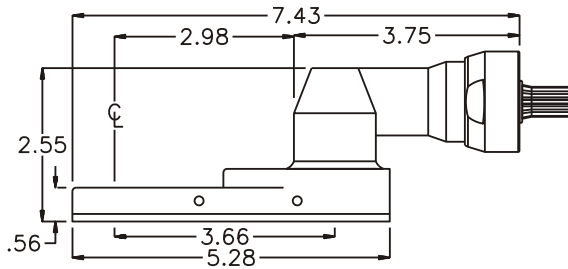
HEAD NO. 8378

CROWFOOT ASS'Y
Rev. B
06-22-01

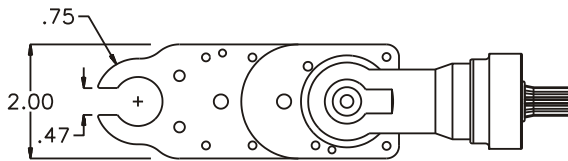
2500 WILLIAMS DRIVE • WATERFORD, MI • 48328

PHONE : (248) 334-2112 • FAX : (248) 334-0062

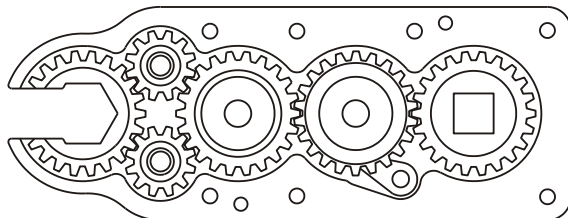
SIDE VIEW



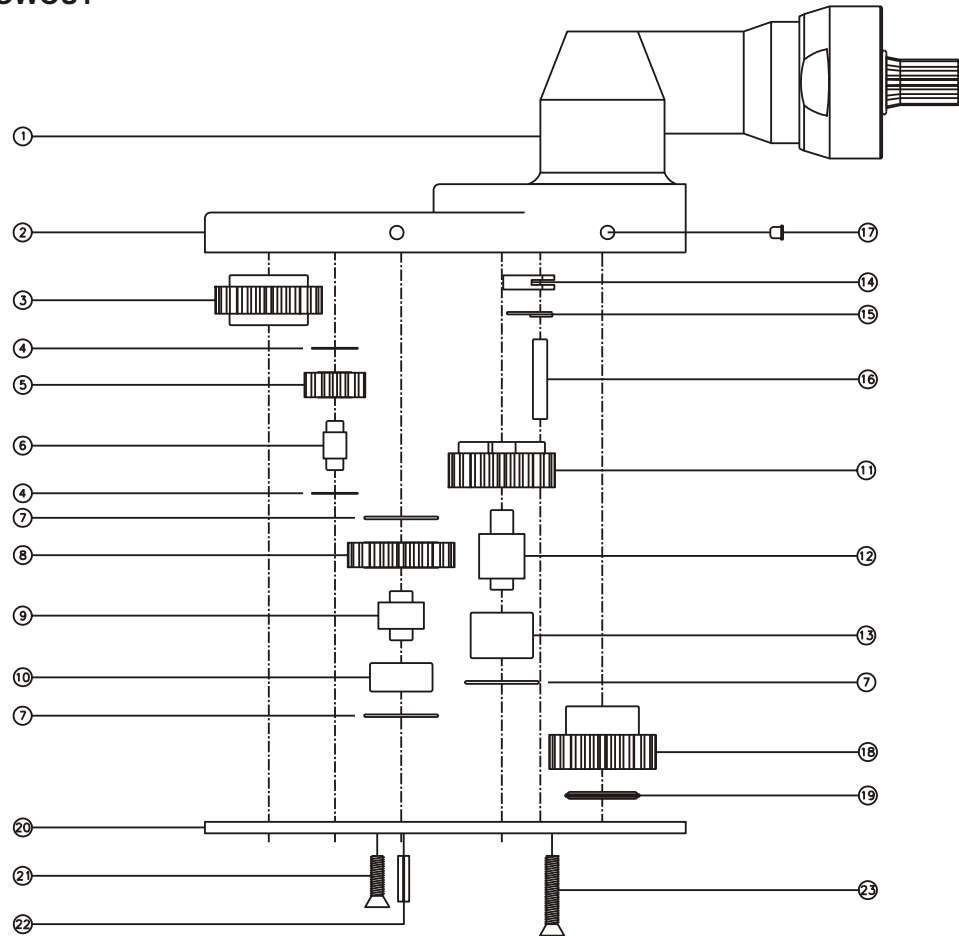
TOP VIEW



GEAR ASSEMBLY



PARTS BLOWOUT



ITEM	DESCRIPTION	PART NO.	ITEM	DESCRIPTION	PART NO.	ITEM	DESCRIPTION	PART NO.
1	Angle Head	GD	11	Cam Gear	202216-C	21	Screw #1 (4)	S-809
2	Gear Housing	321824-1-H	12	Cam Pin	IP-8828	22	Roll Pin (2)	RP-808
3	Socket Gear	202218-1-XX	13	Cam Needle Bearing	B-88	23	Screw #2 (3)	S-814
4	Sm. Thrust Race (4)	TRA-010	14	Pawl	312437-P			
5	Sm. Idler Gear (2)	201209	15	Pawl Spring	TS-156			
6	Sm. Idler Pin (2)	IP-0818A	16	Pawl Pin	P-0528			
7	Lg. Thrust Race (3)	TRA-613	17	Grease Fitting (2)	1877			
8	Lg. Idler Gear	202209	18	Drive Gear	202222-SD			
9	Lg. Idler Pin	IP-8518	19	Thrust Bearing	NTA-613			
10	Lg. Needle Bearing	B-85	20	Bottom Plate	321824-1-P			