

D & D PRODUCTION INC.®

# ASSEMBLY NO. 312824B-2

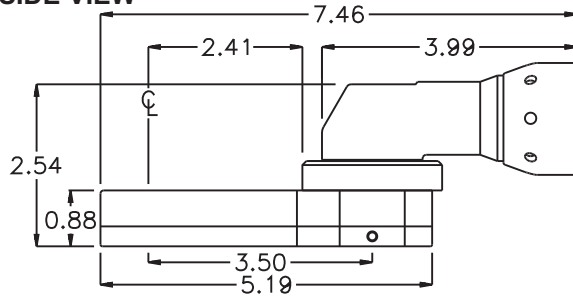
## HEAD NO. 1565

CROWFOOT ASS'Y  
Rev. A  
09-11-07

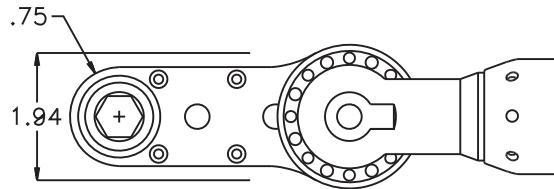
2500 WILLIAMS DRIVE • WATERFORD, MI • 48328

PHONE : (248) 334-2112 • FAX : (248) 334-0062

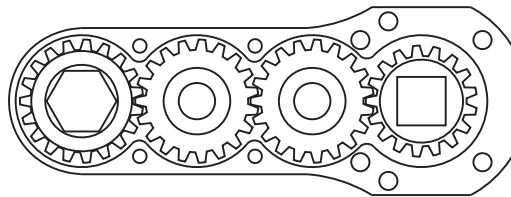
### SIDE VIEW



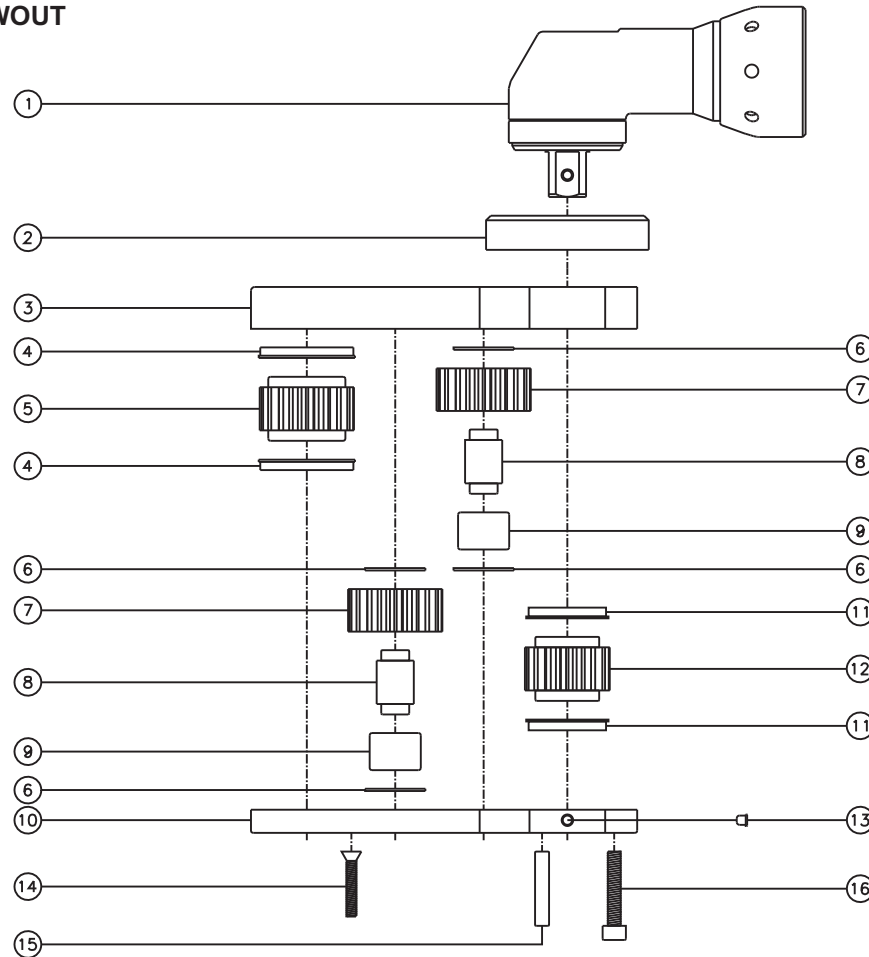
### TOP VIEW



### GEAR ASSEMBLY



### PARTS BLOWOUT



ITEM	DESCRIPTION	PART NO.	ITEM	DESCRIPTION	PART NO.	ITEM	DESCRIPTION	PART NO.
1	Motor	ETV S7-100-13CTADS	11	Bushing #2 (2)	A-4375-M			
2	Angle Head Adapter	HA-3515-13	12	Drive Gear	161728-12SD			
3	Gear Housing (Top)	313624B-2-H	13	Grease Fitting	1877			
4	Bushing #1 (2)	A-6409D	14	Screw #1 (4)	S-814			
5	Socket Gear	161928-XX	15	Dowel Pin (2)	DP-1216			
6	Thrust Race (4)	TRA-815B	16	Screw #2 (4)	S-1016SH			
7	Idler Gear (2)	161918						
8	Idler Pin (2)	IP-8828B						
9	Needle Bearing (2)	B-88						
10	Gear Housing (Bottom)	312824B-2-P						