



D & D PRODUCTION INC.

# ASSEMBLY NO. 312423-1-5

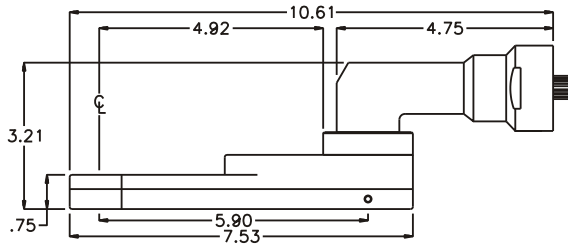
## HEAD NO. 5500

TUBE NUT ASS'Y  
Rev. A  
02-10-00

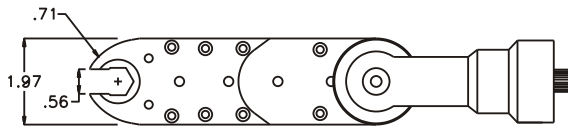
2500 WILLIAMS DRIVE • WATERFORD, MI • 48328

PHONE : (248) 334-2112 • FAX : (248) 334-0062

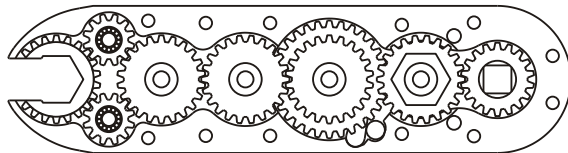
### SIDE VIEW



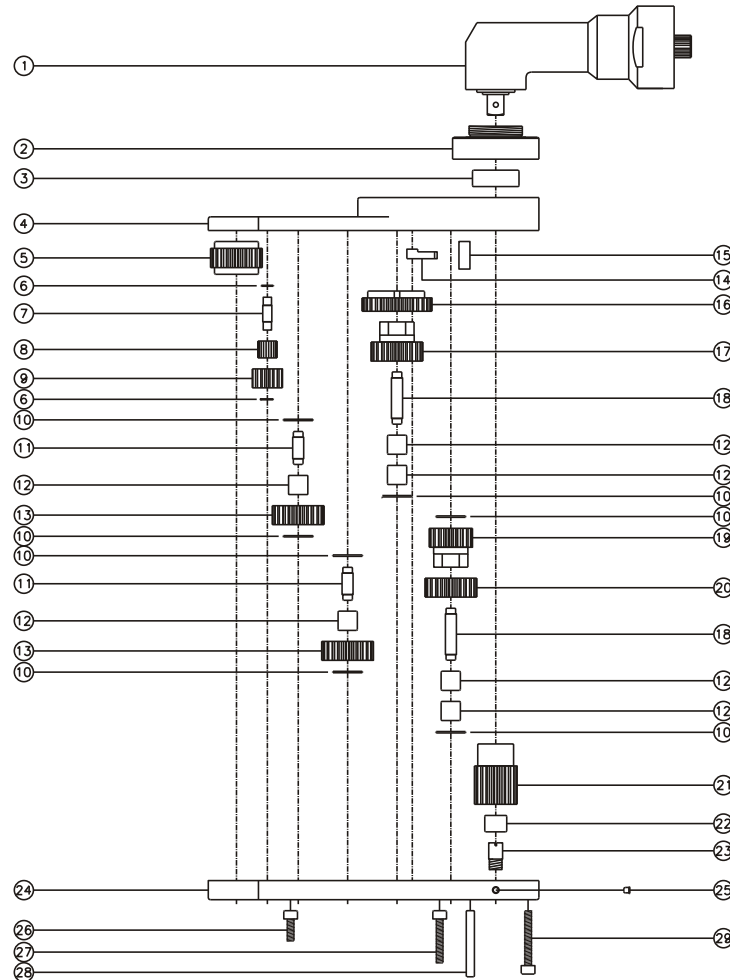
### TOP VIEW



### GEAR ASSEMBLY



### PARTS BLOWOUT



| ITEM | DESCRIPTION          | PART NO.     | ITEM | DESCRIPTION        | PART NO. | ITEM | DESCRIPTION           | PART NO.     |
|------|----------------------|--------------|------|--------------------|----------|------|-----------------------|--------------|
| 1    | Angle Head           | Cleco P Head | 11   | Idler Pin #1 (2)   | IP-4724  | 21   | Drive Gear            | 201844-XXSD  |
| 2    | Angle Head Adapter   | HA-3116-XX   | 12   | Needle Bearing (6) | B-47     | 22   | Needle Bearing        | B-56         |
| 3    | Needle Bearing       | B-136        | 13   | Idler Gear #1 (2)  | 202212   | 23   | Drive Pin             | TP-5620      |
| 4    | Gear Housing (Top)   | 312423-1-5-H | 14   | Pawl               | 0905-PSP | 24   | Gear Housing (Bottom) | 312423-1-5-P |
| 5    | Socket Gear          | 202224-XT-XX | 15   | Pawl Spring        | RSS-0820 | 25   | Grease Fitting        | 1877         |
| 6    | Thrust Race (4)      | W-991-020    | 16   | Cam Gear #2B       | 203015-C | 26   | Screw #1 (6)          | S-1008SH     |
| 7    | Sm. Idler Pin (2)    | IP-0724      | 17   | Idler Gear #2A     | 202229   | 27   | Screw #2 (2)          | S-1016SH     |
| 8    | Bearing Needles (28) | LR15M98      | 18   | Idler Pin #2 (2)   | IP-4738  | 28   | Dowel Pin (2)         | DP-1224      |
| 9    | Sm. Idler Gear (2)   | 201214       | 19   | Idler Gear #3A     | 201827   | 29   | Screw #3 (4)          | S-1020SH     |
| 10   | Thrust Race (7)      | TRA-411      | 20   | Idler Gear #3B     | 202214   |      |                       |              |