



D & D PRODUCTION INC.

ASSEMBLY NO. 292721-00-L42

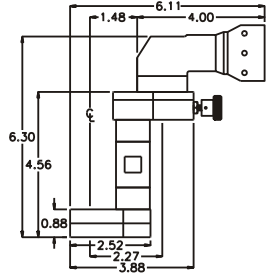
HEAD NO. 8430

CROWFOOT ASS'Y
Rev. A
08-23-96

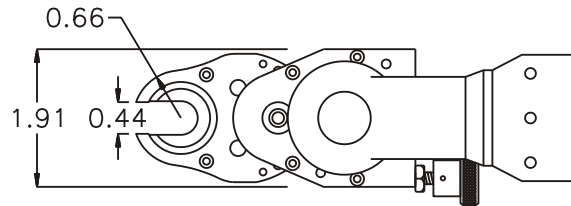
2500 WILLIAMS DRIVE • WATERFORD, MI • 48328

PHONE : (248) 334-2112 • FAX : (248) 334-0062

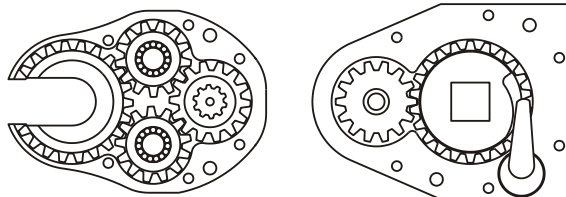
SIDE VIEW



TOP VIEW



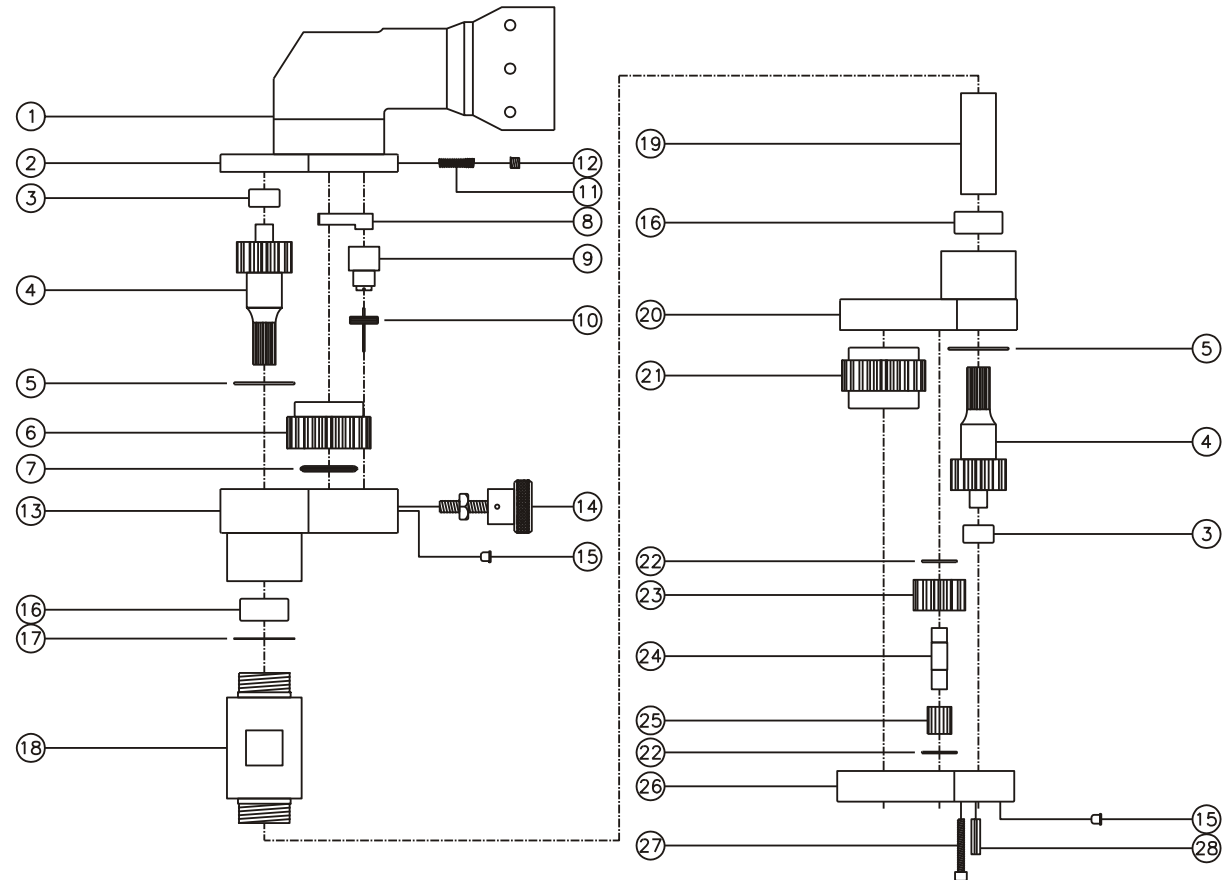
GEAR ASSEMBLY



LOWER HSNG.

UPPER HSNG.

PARTS BLOWOUT



ITEM	DESCRIPTION	PART NO.	ITEM	DESCRIPTION	PART NO.	ITEM	DESCRIPTION	PART NO.
1	Angle Head	ETV S7	11	Pawl Spring	CS-816	21	Socket Gear	202228-1-XX
2	Upper Top Plate	292721-00-UT	12	Set Screw	SS-802	22	Thrust Race (4)	W-1135-027
3	Needle Bearing (2)	M-441	13	Upper Gear Housing	292721-00-UB	23	Sm. Idler Gear (2)	201314
4	Lg. Idler Gear (2)	201447	14	Pawl Adjustment Knob	KKS51	24	Sm. Idler Pin (2)	IP-0728
5	Thrust Race (2)	W-2223-031	15	Grease Fitting (2)	1877	25	Bearing Needles (30)	LR15M98
6	Drive Gear	202221-SD	16	Needle Bearing (2)	B-85	26	Lower Bottom Housing	292721-00-LB
7	Thrust Bearing	NTA-613	17	Shim (.002", .005", .010")	W-2725-(002, 005, 010)	27	Screw (12)	S-412SH
8	Pawl	PSP-1005R6	18	Drive Shaft Housing	L42H	28	Roll Pin (4)	RP-408
9	Pawl Pivot	PV-8430	19	Drive Shaft	DS-8430			
10	Pivot Spring	TS-1308-L	20	Lower Top Housing	292721-00-LT			