



D & D PRODUCTION INC.®

ASSEMBLY NO. 282821-00

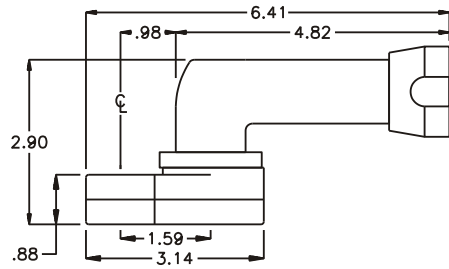
HEAD NO. 8437

CROWFOOT ASS'Y
Rev. A
11-07-02

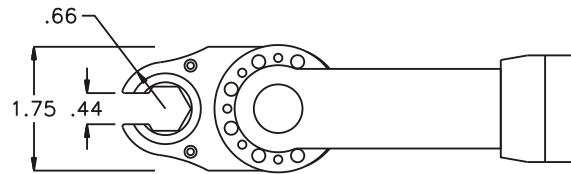
2500 WILLIAMS DRIVE • WATERFORD, MI • 48328

PHONE : (248) 334-2112 • FAX : (248) 334-0062

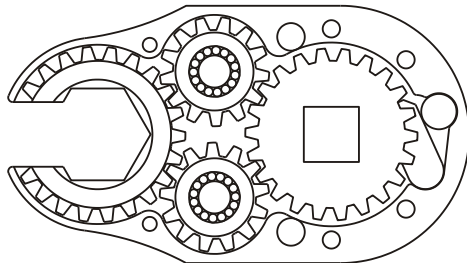
SIDE VIEW



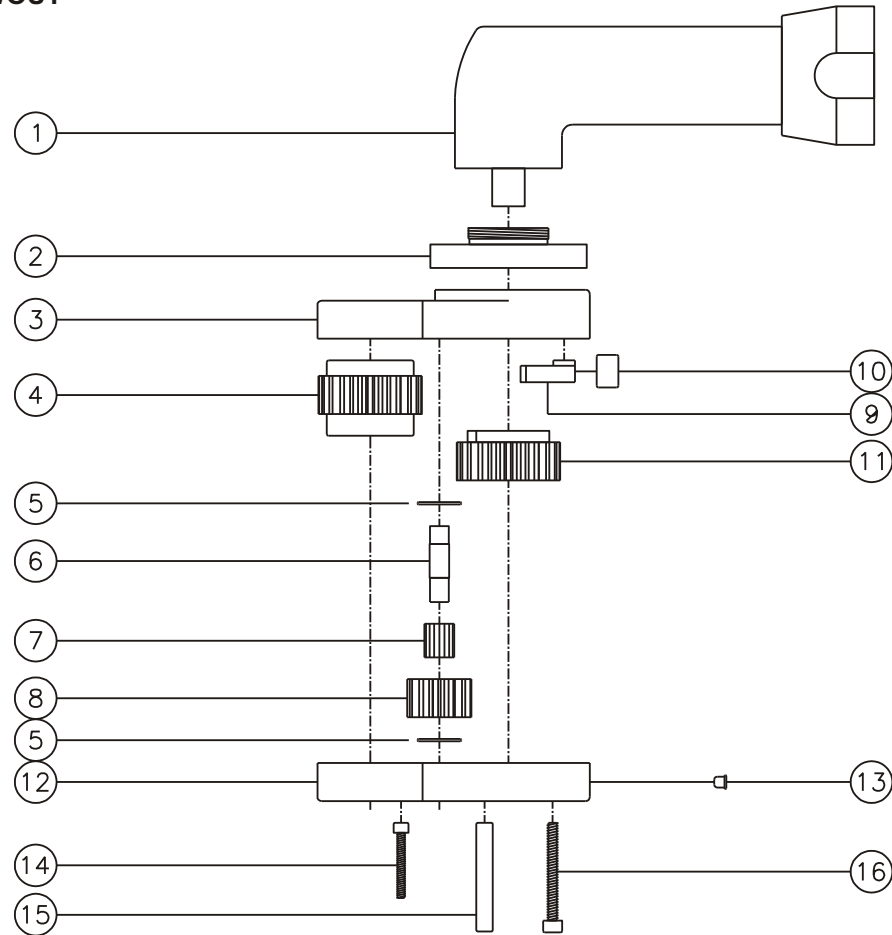
TOP VIEW



GEAR ASSEMBLY



PARTS BLOWOUT



ITEM	DESCRIPTION	PART NO.	ITEM	DESCRIPTION	PART NO.	ITEM	DESCRIPTION	PART NO.
1	Angle Head	IR 2S6	11	Drive Gear	202218-38SDC			
2	Angle Head Adapter	HA-2909-2S6	12	Gear Housing (Bottom)	282821-00-P			
3	Gear Housing (Top)	282821-00-H	13	Grease Fitting	1877			
4	Socket Gear	202228-1-XX	14	Screw #1 (2)	S-412SH			
5	Thrust Race (4)	W-1135-027	15	Dowel Pin (2)	DP-1220			
6	Idler Pin (2)	IP-0728	16	Screw #2 (4)	S-618SH			
7	Bearing Needles (30)	LR15M98						
8	Idler Gear (2)	201314						
9	Pawl	0806-RPS-P						
10	Pawl Spring	RSS-0812						