



D & D PRODUCTION INC.

ASSEMBLY NO. 282821-00

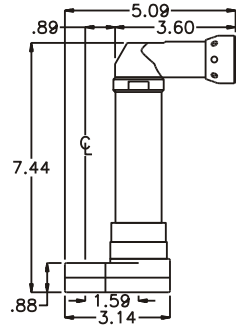
HEAD NO. 8432

CROWFOOT ASS'Y
Rev. A
04-17-01

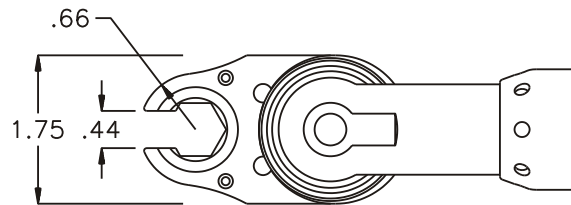
2500 WILLIAMS DRIVE • WATERFORD, MI • 48328

PHONE : (248) 334-2112 • FAX : (248) 334-0062

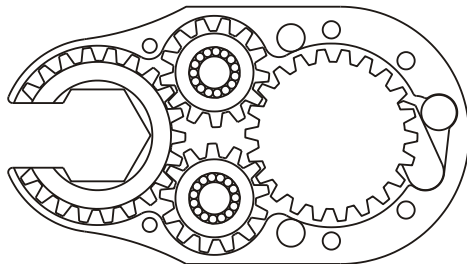
SIDE VIEW



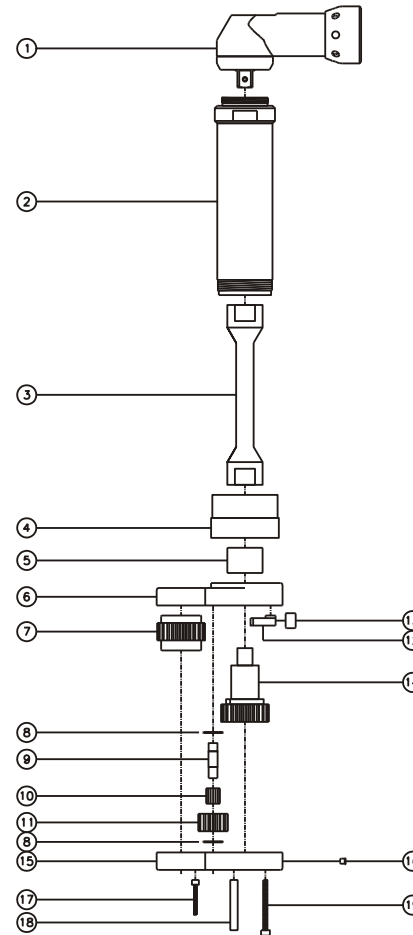
TOP VIEW



GEAR ASSEMBLY



PARTS BLOWOUT



ITEM	DESCRIPTION	PART NO.	ITEM	DESCRIPTION	PART NO.	ITEM	DESCRIPTION	PART NO.
1	Angle Head	A/C 10B	11	Idler Gear (2)	201314			
2	Offset Extension	HAL-27174A	12	Pawl	0806-RPS-P			
3	Drive Shaft	DS-628141	13	Pawl Spring	RSS-0812			
4	Offset Adapter	HAL-27174B	14	Drive Gear	202259-38MSD			
5	Needle Bearing	B-1110	15	Gear Housing (Bottom)	282821-00-P			
6	Gear Housing (Top)	282821-00-H	16	Grease Fitting	1877			
7	Socket Gear	202228-1-XX	17	Screw #1 (2)	S-412SH			
8	Thrust Race (4)	W-1135-027	18	Dowel Pin (2)	DP-1220			
9	Idler Pin (2)	IP-0728	19	Screw #2 (4)	S-620SH			
10	Bearing Needles (30)	LR15M98						