



D & D PRODUCTION INC.

# ASSEMBLY NO. 281628-1

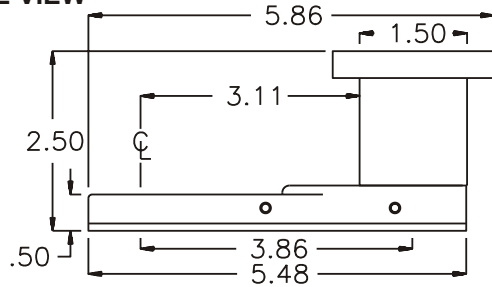
## HEAD NO. 8371

CROWFOOT ASS'Y  
Rev. B  
02-21-01

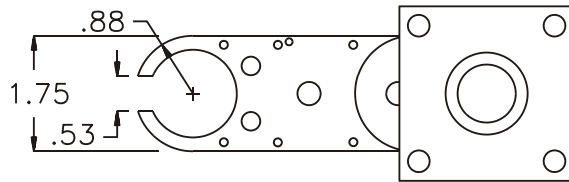
2500 WILLIAMS DRIVE • WATERFORD, MI • 48328

PHONE : (248) 334-2112 • FAX : (248) 334-0062

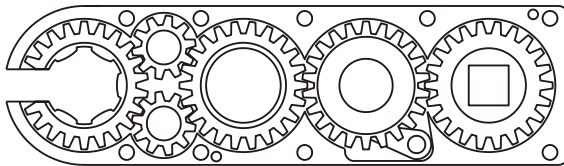
### SIDE VIEW



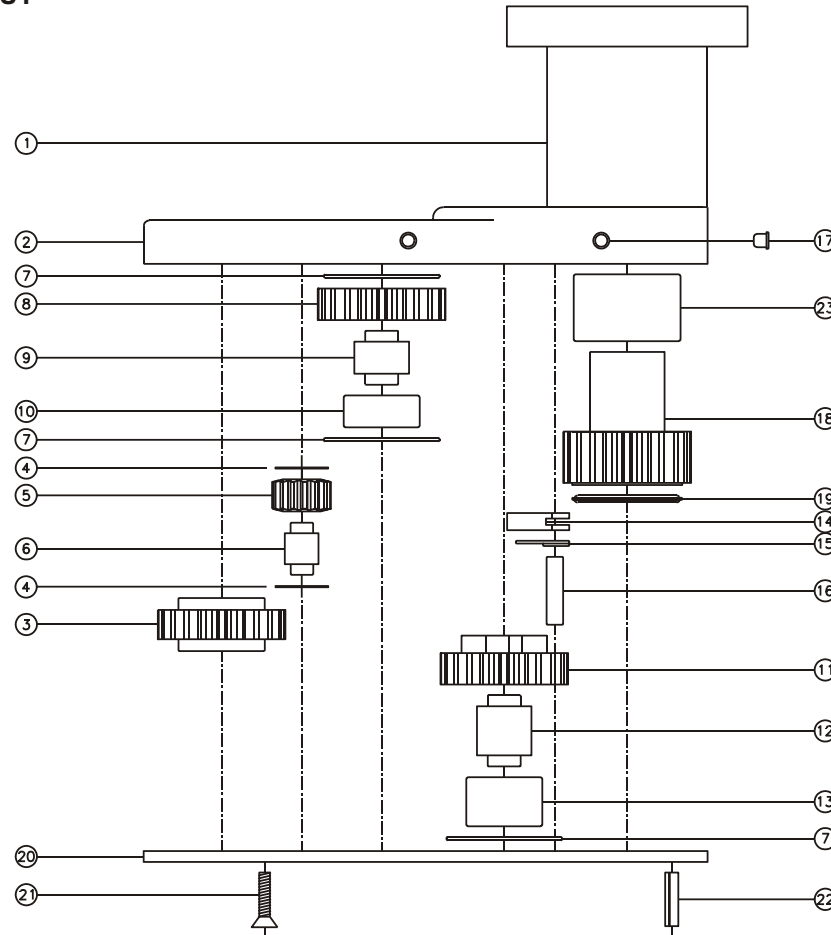
### TOP VIEW



### GEAR ASSEMBLY



### PARTS BLOWOUT



ITEM	DESCRIPTION	PART NO.	ITEM	DESCRIPTION	PART NO.	ITEM	DESCRIPTION	PART NO.
1	Mounting Bracket	MU-2987	11	Cam Gear	202416-C	21	Screw (9)	S-809
2	Gear Housing	281628-1-H	12	Cam Pin	IP-8824	22	Roll Pin (2)	RP-808
3	Socket Gear	202416-1-XX	13	Cam Needle Bearing	B-88	23	Needle Bearing	B-1210
4	Sm. Thrust Race (4)	TRA-010	14	Pawl	1204-P			
5	Sm. Idler Gear (2)	201210	15	Pawl Spring	TS-156			
6	Sm. Idler Pin (2)	IP-0816B	16	Pawl Pin	P-0524			
7	Lg. Thrust Race (3)	TRA-613	17	Grease Fitting (2)	1877			
8	Lg. Idler Gear	202410	18	Drive Gear	201820-SD			
9	Lg. Idler Pin	IP-8516	19	Thrust Bearing	NTA-613			
10	Lg. Needle Bearing	B-85	20	Bottom Plate	281628-1-P			