



D & D PRODUCTION INC.

ASSEMBLY NO. 272520AM1-3

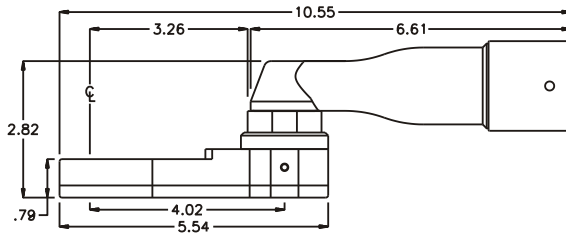
HEAD NO. 3475

CROWFOOT ASS'Y
Rev. A
06-24-02

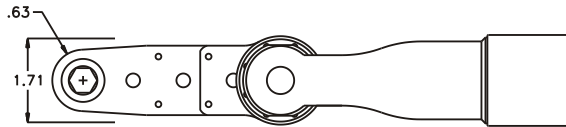
2500 WILLIAMS DRIVE • WATERFORD, MI • 48328

PHONE : (248) 334-2112 • FAX : (248) 334-0062

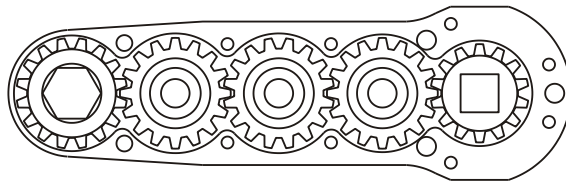
SIDE VIEW



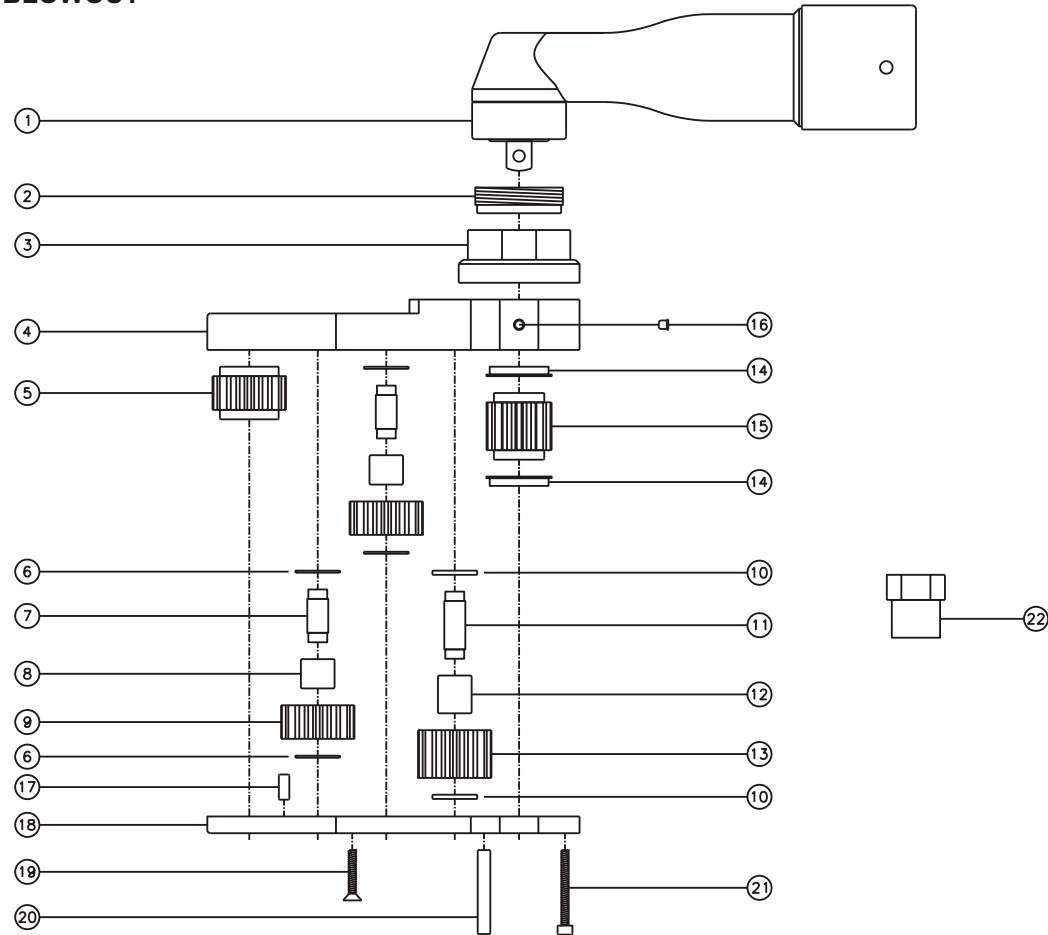
TOP VIEW



GEAR ASSEMBLY



PARTS BLOWOUT



ITEM	DESCRIPTION	PART NO.	ITEM	DESCRIPTION	PART NO.	ITEM	DESCRIPTION	PART NO.
1	Angle Head	GSE 66A50	11	Lg. Idler Pin	IP-5932	21	Screw #2 (4)	S-618SH
2	Adapter Nut	N-2825	12	Needle Bearing	B-59	22	Adapter Nut Socket (Optional)	ENT-24M38SD
3	Angle Head Adapter	HA-2825-66A50	13	Lg. Idler Gear	161623S2			
4	Gear Housing (Top)	272520AM1-3-H	14	Bushing (2)	A-4809B			
5	Socket Gear	161625SM1-XX	15	Drive Gear	161432S-38SD			
6	Thrust Race (4)	TRA-512M1	16	Grease Fitting	1877			
7	Sm. Idler Pin (2)	IP-5725B	17	Dowel Pin #1 (2)	DP-1006			
8	Needle Bearing (2)	B-57	18	Gear Housing (Bottom)	272520AM1-3-P			
9	Sm. Idler Gear (2)	161616S2	19	Screw #1 (4)	S-612			
10	Thrust Race (2)	TRB-512M	20	Dowel Pin #2 (3)	DP-1220			