

D & D PRODUCTION INC.®

ASSEMBLY NO. 271525-00

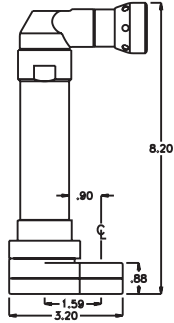
HEAD NO. 8320

CROWFOOT ASS'Y
Rev. A
02-01-06

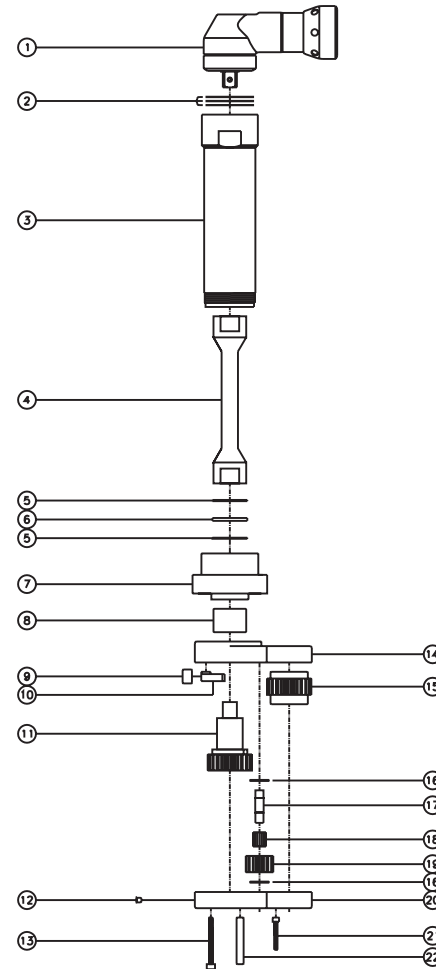
2500 WILLIAMS DRIVE • WATERFORD, MI • 48328

PHONE : (248) 334-2112 • FAX : (248) 334-0062

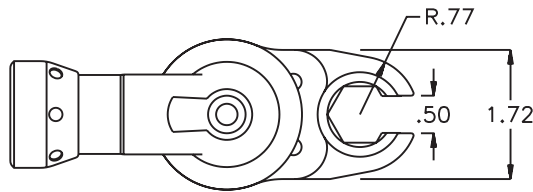
SIDE VIEW



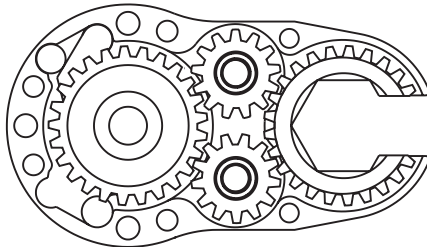
PARTS BLOWOUT



TOP VIEW



GEAR ASSEMBLY



ITEM	DESCRIPTION	PART NO.	ITEM	DESCRIPTION	PART NO.	ITEM	DESCRIPTION	PART NO.
1	Angle Head	A/C 10	11	Drive Gear	202561-38MSD	21	Dowel Pin #1 (2)	DP-1004
2	Orientation Shim Set	SHI-AC10X	12	Grease Fitting	1877	22	Dowel Pin #2 (3)	DP-1220
3	Offset Extension	HAL-27174A-10	13	Screw (4)	S-820SH	23		
4	Drive Shaft	DS-628141	14	Gear Housing (Top)	271525-00-H	24		
5	Thrust Race (2)	TRA-815	15	Socket Gear	202515-1-XX	25		
6	Thrust Bearing	NTA-815	16	Thrust Race (4)	TRA-411MB	26		
7	Offset Adapter	HAL-27174C	17	Idler Pin (2)	IP-6M23	27		
8	Needle Bearing	B-1112	18	Needle Bearing (2)	K6910M	28		
9	Pawl Spring	RSS-0813	19	Idler Gear (2)	201316	29		
10	Pawl	0806-RPS-P	20	Gear Housing (Bottom)	271525-00-P	30		