



D & D PRODUCTION INC.®

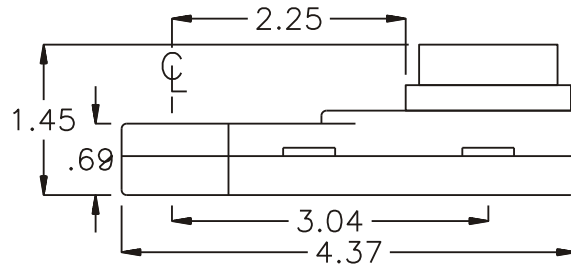
# ASSEMBLY NO. 262220R-1

## HEAD NO. 8310

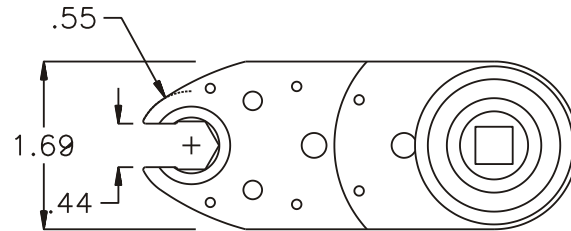
CROWFOOT ASS'Y  
Rev. A  
02-27-03

2500 WILLIAMS DRIVE • WATERFORD, MI • 48328 PHONE : (248) 334-2112 • FAX : (248) 334-0062

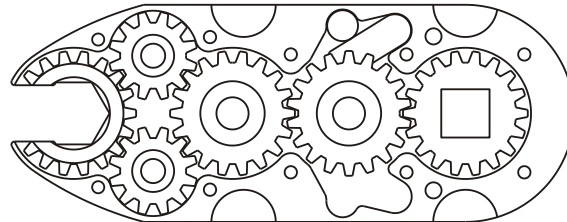
### SIDE VIEW



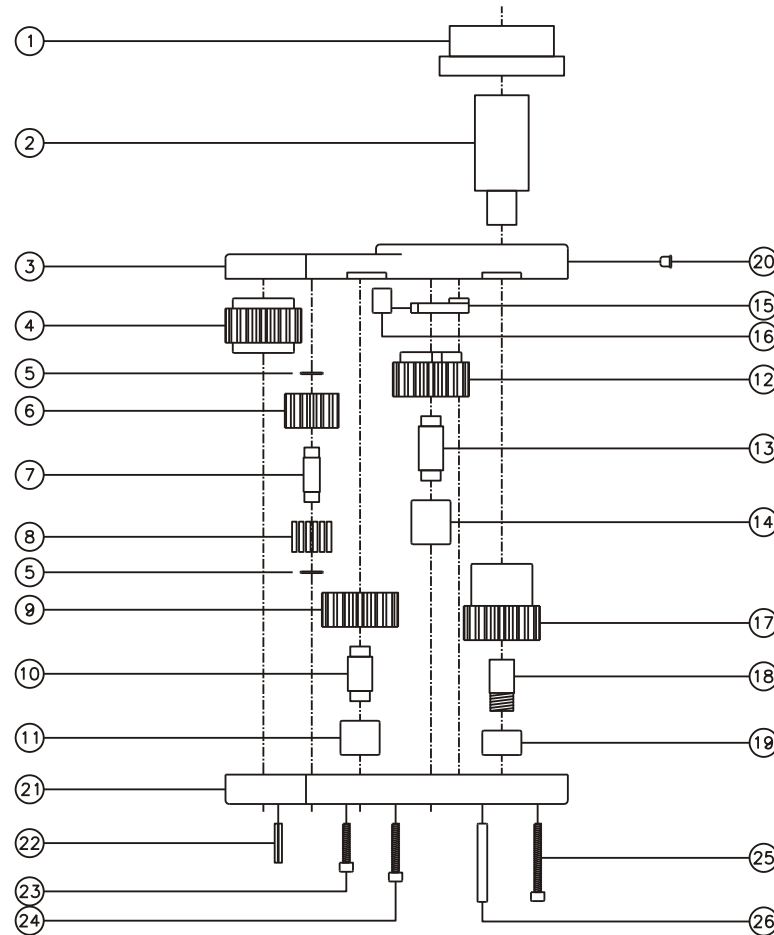
### TOP VIEW



### GEAR ASSEMBLY



### PARTS BLOWOUT



ITEM	DESCRIPTION	PART NO.	ITEM	DESCRIPTION	PART NO.	ITEM	DESCRIPTION	PART NO.
1	Adapter	HA-2520	11	Needle Bearing	B-57	21	Gear Housing (Bottom)	262220-1-P
2	Drive Shaft	DS-38F38M2253	12	Cam Gear	201818-CR	22	Roll Pin (2)	RP-608
3	Gear Housing (Top)	262220R-1-H	13	Cam Pin	IP-5926	23	Screw #1 (2)	S-408SH
4	Socket Gear	201822-1-XX	14	Needle Bearing	B-59	24	Screw #2 (2)	S-410SH
5	Sm. Thrust Race (4)	W-991-020	15	Pawl	1004-RPS-P	25	Screw #3 (4)	S-414SH
6	Sm. Idler Gear (2)	201214	16	Pawl Spring	RSS-0810	26	Dowel Pin (2)	DP-816
7	Sm. Idler Pin (2)	IP-0722	17	Drive Gear	201831-38SD			
8	Bearing Needles (28)	LR15M98	18	Drive Pin	TP-5521			
9	Lg. Idler Gear	201814	19	Needle Bearing	B-55			
10	Lg. Idler Pin	IP-5722	20	Grease Fitting	1877			